

USER MANUAL

Matrix Remover

MCH100MTX17

THIS PRODUCT IS CERTIFIED:



IMPORTANT NOTICE

THE MACHINE CAN ALSO BE USED AS SLITTER ONLY.

WHEN YOU DO THAT, PLEASE REMOVE THE TOP MOTORIZED CORE HOLDER AND ADJUST THE CLUTCH KNOB ON THE UNWINDER CORE HOLDER.

CORE HOLDER



Motorized core holder

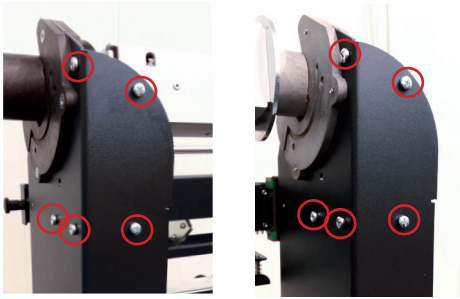


Non-Motorized core holder

*Use only on
unwinder station*

HOW TO INSTALL THE PRESSING ROLLER

The pressing roller facilitates the matrix removal from the die-cut roll.
Remove it from rewinder station (there are 4 knobs to unscrew).



How to install:

1. Unscrew the 10 screws on the top of matrix remover module.
2. Position the matrix remover roller onto the matrix remover module and secure it properly with the 10 screws.

RUN A JOB



WARNING: Before starting a new job, always make sure the waste matrix from the previous job has been removed.

Do not attach the matrix from a different size label to an existing roll.

This will cause an uneven wrap which will cause the material to walk.



Load the printed and die cut roll in the core holder (non-motorized).

Push until it touches roll guide.

2



Load a cardboard core onto the core holder (motorized).

Push the cardboard until it touches the core stop. Tighten using the tension knob.

3



Insert the empty cardboard core on the core holder (motorized) to receive the new labels roll..

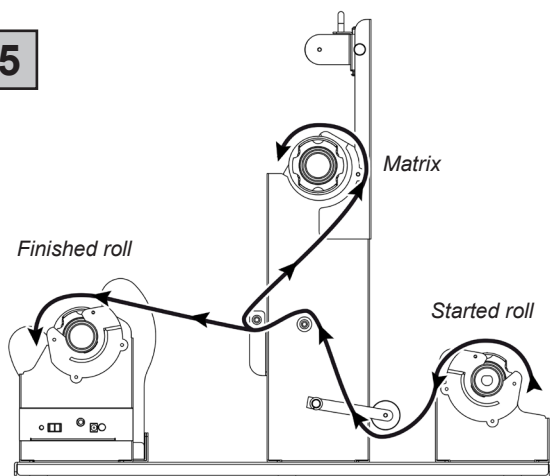
4



Insert the core holders onto their respective supports. Match the gray handle to gray holder.

5

Paper path.



6

Pull the printed labels for about fifty centimeters.



7

Set the waste core holder in its respective support.

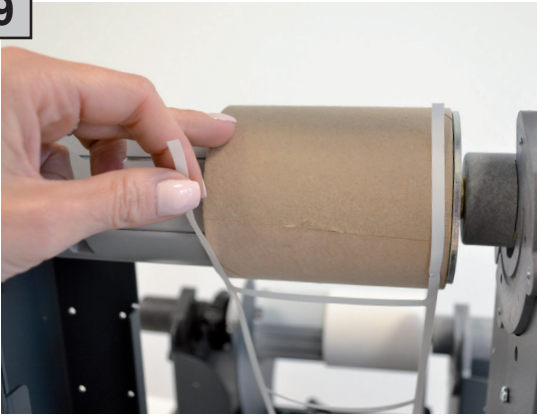


8



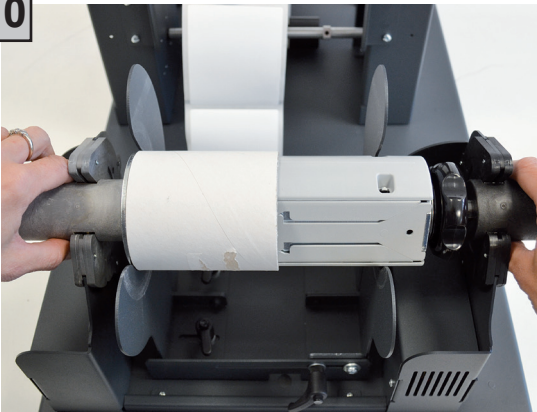
At this point separate the matrix from liner.

9



Attach the matrix to the empty core on the wasted core.

10



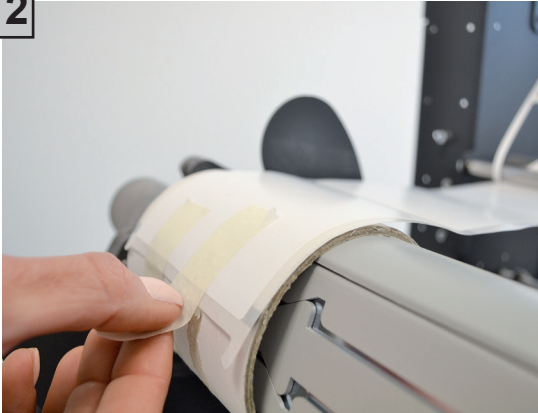
Insert the last core holder into the lower matrix support (for finished roll).

11



Continue pulling the printed labels and manually turning the weeder mandrel so that the matrix is wrapped around the core at least once.

12

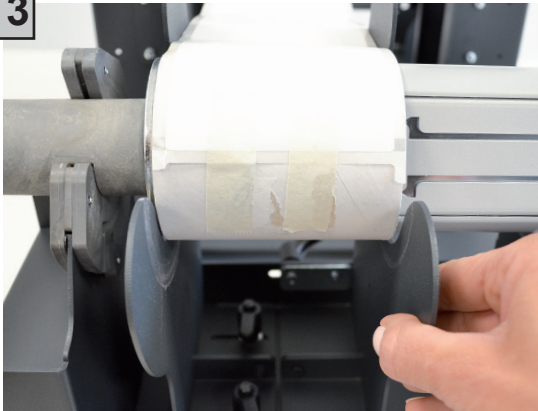


1. Move the printed label behind the lower MCH

2. Position the empty cardboard core on the single future new labels roll

3. Tighten the roll and the guide in place by turning the tension knob.

13



Temporarily attach the label directly to the take-up mandrel.

This will provide the necessary tension in order to start the slitting process.

15



Turn on the MATRIX REMOVER using the power switch on the back.

Make sure the speed knob is in the slowest position before you switch on the MATRIX REMOVER.

Slowly turn to increase the speed. Evaluate the following areas:

- 1. Matrix Release**
- 2. Matrix Mandrel Wrapping**
- 3. Slitting**
- 4. Finished Cores**

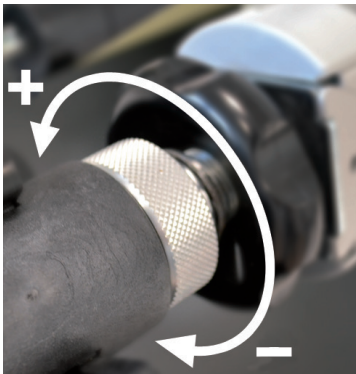
When the roll is finished, the unit automatically stops when the contact on the dancer arm touches the screw on the base.

You will also hear an audible tone.

Finally, remove the waste matrix mandrel and discard the matrix and the core.

We do not recommend reusing the same core with matrix from a previous job still attached.

HOW TO ADJUST THE CLUTCH ON UNWINDER



It is possible to adjust the clutch by just screwing or loosening the aluminium handle on it.

+ more clutch

- less clutch

Note on Media Environment:

50% humidity and 72 degrees Fahrenheit is the optimal conditions for both storage and use of label stock. Store label stock in protective plastic wrappings. Rewrap partially used stock. Do not store stock directly on concrete floors.

Label stock should be conditioned in this environment for 72 hours prior to use. Failure to store media in these conditions may result in media tension problems. Too much humidity will cause labels to curl on the edges.



Warnings

- The main plug of power supply cord set of AC/DC power supply is considered as disconnecting device of equipment.
- Do not operate the Matrix Remover while wearing loose fitting clothing or neck ties. Serious injury may result. If clothing or fingers are caught in the rollers, immediately disconnect the D.C. connector.
- Keep your hands away from the Matrix Remover at all times while the unit is running.
- When replacing Slitter blades work from the back blade housing to the front. This will minimize the chance of injury since you will not be working over already installed blades.
- When transporting the unit or any time the unit is not in use always lower the slitter station into the down/cut position. This will prevent accidental contact with the slitter blades. The two rollers below the slitter station act as a guard when the slitter station is in the down position.
- To prevent fire or shock hazard, do not expose the unit to rain or moisture. Operate the unit with only proper electrical specifications as labeled on the unit and the AC adapter.

WARNING
HAZARDOUS MOVING PARTS
KEEP FINGERS AND OTHER BODY PARTS AWAY

FCC Compliance Statement: This device complies with part 15 of the FCC rules. Operation is subject to the following two conditions: (1) this device may not cause harmful interference, and (2) this device must accept any interference received, including interference that may cause undesired operation.

For Users in the United States: This product is intended to be supplied by AC/DC Power Supply delivered with the machine as for the UL regulation tested and certificated together. This equipment has been tested and found to comply with the limits for a Class A digital device, pursuant to Part 15 of the FCC Rules. In a domestic environment this product may cause radio Interference In which case the user may be required to take adequate measures. This equipment generates, uses, and can radiate radio frequency energy and, if not installed and used in accordance with the instructions, may cause harmful interference to radio communications. However, there is no guarantee that interference will not occur in a particular installation. If this equipment does cause harmful interference to radio or television reception, which can be determined by turning the equipment off and on, the user is encouraged to try to correct the interference by one or more of the following measures:

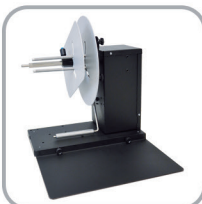
- Re-orient or relocate the receiving antenna.
- Increase the separation between the equipment and receiver.
- Connect the equipment into an outlet on a circuit different from that to which the receiver is connected.
- Consult the dealer or an experienced radio/TV technician for help.

Use of shielded cables is required to comply with the Class A limits of Part 15 of the FCC Rules. You are cautioned that any changes or modifications not expressly approved in this manual could void your authority to operate and/or obtain warranty service for this equipment.

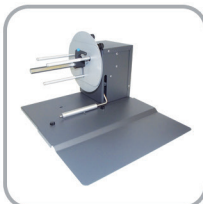
SMART SOLUTIONS FOR THE LABELING INDUSTRY

Label rewinder, label unwinder, electronic label dispenser and more...

OTHER
PRODUCTS



LABEL UNWINDER/REWINDER



SMALL LABEL
UNWINDER/REWINDER



LABEL COUNTER



ROLL TO ROLL SYSTEM
FOR LABEL PRINTERS



ROLL TO ROLL SYSTEM
FOR EPSON PRINTERS



ROLL TO ROLL SYSTEM
FOR VIPCOLOR VP SERIES



ROLL TO ROLL SYSTEM
FOR PRIMERA LX SERIES



MATRIX REMOVER AND SLITTER



LONGITUDINAL LABEL SLITTER



EASY LABEL DISPENSER



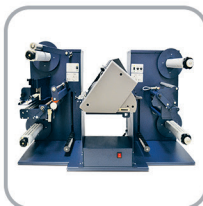
ELECTRONIC
LABEL DISPENSER



SCORPIO SERIES:
DIGITAL LABEL FINISHING SYSTEMS



GEMINI:
DIGITAL DIE CUTTER FOR SHEETS



VIRGO:
DESKTOP DIGITAL FINISHING SYSTEM



MOTORIZED CORE HOLDER
UNWINDER/REWINDER

- FOR MORE INFO CONTACT YOUR RESELLER -