



STOCKTAKE DOWNLOADING SOFTWARE FOR PC (STOCKTAKE)

CONTENTS

1.0	Introduction
2.0	Installing and Configuring the Download Software
2.1	Installing the USB Drivers
2.2	Installing the STOCKTAKE Software
2.2.1	Executing STOCKTAKE for the First Time
2.2.2	Configuring STOCKTAKE
3.0	Using STOCKTAKE
3.1	Downloading Stored Orders from the Terminals
3.2	The Output Data File

1.0 Introduction

The PC software (STOCKTAKE) operates with the supplied CPT8001 terminals and is used to collect stored data from the terminals and to write those data records to a text file in a simple comma delimited format.

2.0 Installing and Configuring the Download Software

The CPT8001 terminals are supplied with communications cradles which incorporate either an RS232 or USB interface for connection to the host PC.

If using USB cradles it will be necessary to install both the USB/Virtual COM Port Driver for the cradle, and the STOCKTAKE download application.

If using RS232 cradles it will only be necessary to install the STOCKTAKE application as no drivers are required for this cradle. In this case please proceed to section 2.2 below.

2.1 Installing the USB Drivers (USB Cradles only)

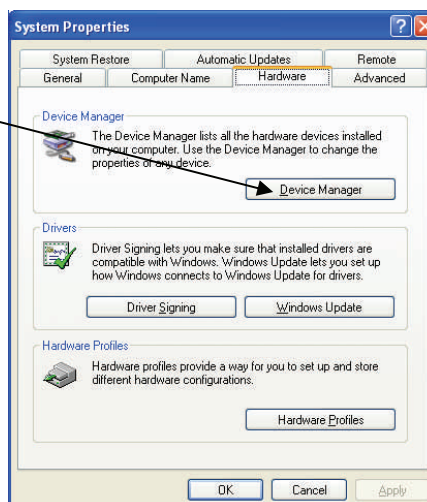
To install the USB/ Virtual COM port Drivers for the cradle please refer to the separate document

Note: The 'driver' installation procedure will install both the Cipherlab '308' USB driver itself and associated 'Virtual Com Port' Software which makes the cradle appear to the PC as if it were connected to a standard PC COM port. In this way the same STOCKTAKE download software can operate with both USB and RS232 versions of the Communications Cradle.

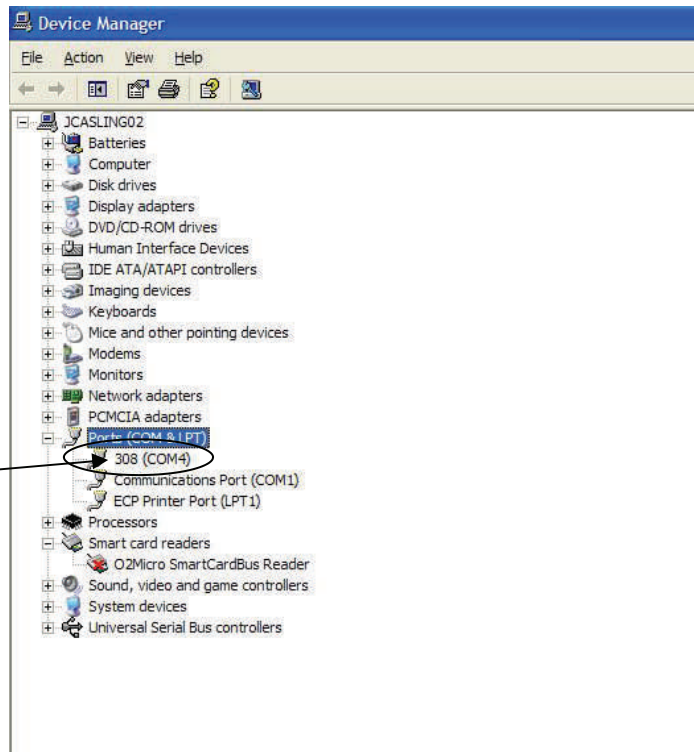
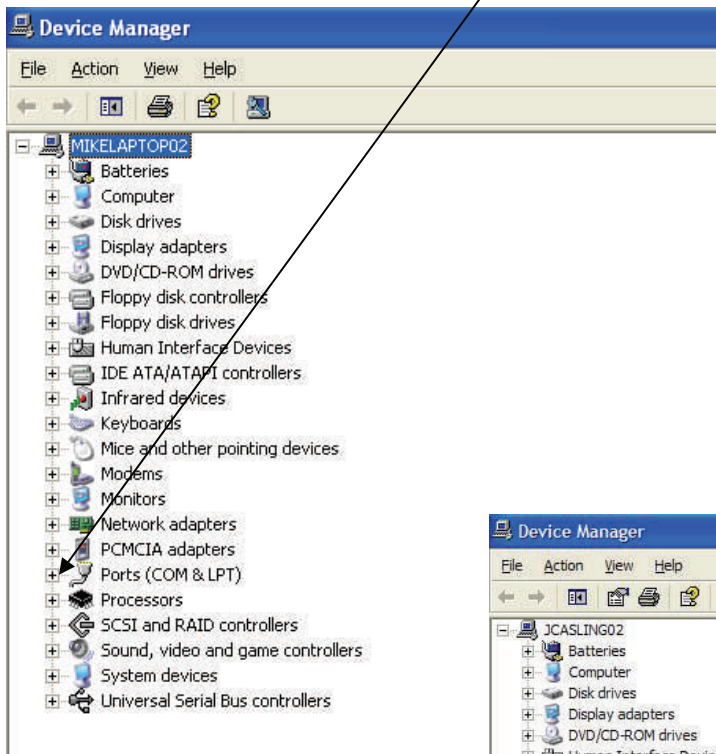
The Virtual COM Port software will automatically assign an available COM port for the Cradle. To determine which COM port has been assigned Proceed as follows:

- 1) Open the Windows **Control Panel** from the **Start Menu**.
- 2) Click **System** and select the **Hardware** tab:

- 3) Click **Device Manager**



4) Under Device Manager expand the **Ports** option by clicking the '+'



5) The COM port assigned to the Cipherlab 308 USB Driver will be identified here (In this example COM4 has been assigned)

6) Note the assigned COM port as this will be required when configuring STOCKTAKE below.

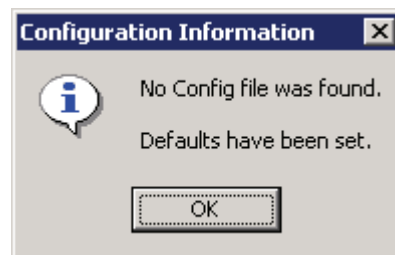
2.2 Installing the STOCKTAKE Software:

- Insert the CD in the drive and execute the Windows program installer '**Setup.exe**' from the 'System' folder on the CD.

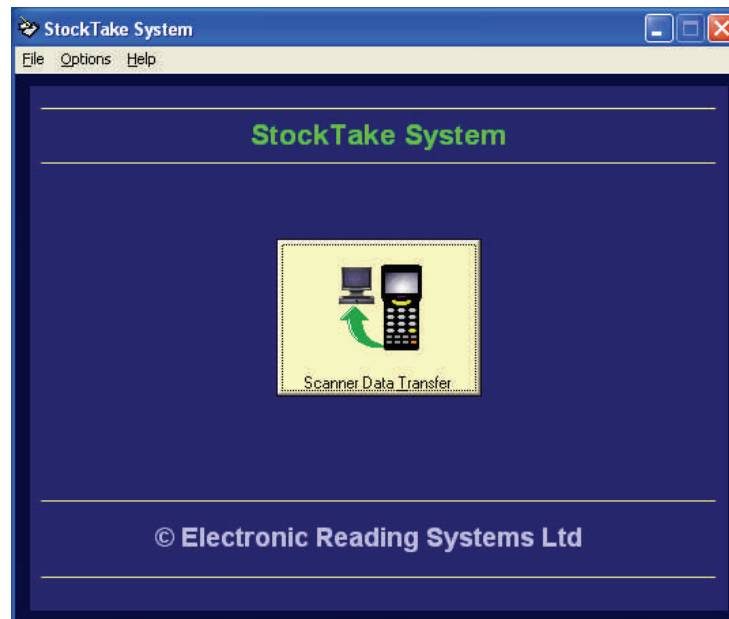
- Now follow the instructions to install the PC downloading software. The application will be installed by default to **C:\program files\Stocktake**

2.2.1 Executing STOCKTAKE for the First Time

When executing STOCKTAKE for the first time the following message will be displayed:



Click OK to continue. The main program screen will now be displayed:



2.2.2 Configuring STOCKTAKE

STOCKTAKE will initially require configuration of the COM port to which the download cradle is attached, the output file path, and the file operating mode as detailed below.

To configure the software click **Options - Configuration** from the program Menu Bar:

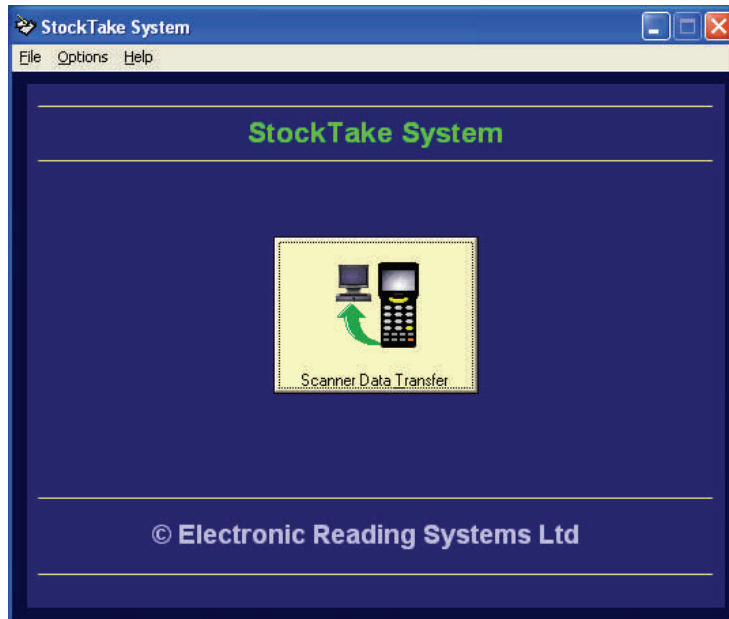
The screenshot shows the 'Configuration Options' dialog box with the following settings and callouts:

- Automatic Export Path:** The text field contains 'C:\PROGRAM FILES\STOCKTAKE'. A callout box points to this field with the text: 'Choose Automatic or Manual file naming (See Section 3.2 below)'. A 'Browse' button is located to the right of the text field. A callout box points to this button with the text: 'Use the Browse button to specify the required path for the output data file'. Below the text field are two radio buttons: 'Automatic Path & Filename' (selected) and 'Manual Path & Filename'.
- Communication Port:** A dropdown menu is set to 'COM1'. A callout box points to this dropdown with the text: 'Select the required COM Port from the drop down list. This is the COM port to which the Communications cradle is attached'. Below the dropdown is a checked checkbox labeled 'CipherLab IrDA'. A callout box points to this checkbox with the text: 'This is included for backward compatibility with ScanPal/711 terminals. For use with CPT8000 series terminals ensure this box is ticked'.
- Record Delimiters:** Two checked checkboxes are present: 'CR' and 'LF'. A callout box points to these checkboxes with the text: 'The output file may be configured to delimit the data records with either or both of the Carriage Return and Line Feed Characters'.

At the bottom right of the dialog box are 'Ok' and 'Cancel' buttons.

3.0 Using STOCKTAKE

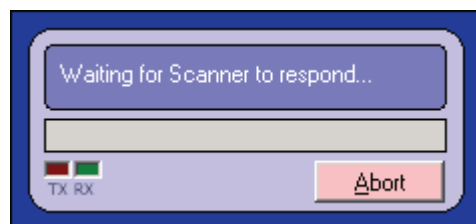
On execution the program startup screen will be displayed:



3.1 Downloading Stored Data from the Terminals

To download stored data from the terminals proceed as follows:

- Ensure the downloading cradle is powered ON and connected to the relevant PC COM/USB port.
- Select Menu Option 2 (DOWNLOAD) on the Terminal and place the terminal in the downloading cradle.
- Click the **Scanner Data Transfer** button from STOCKTAKE. The downloading process will now commence:



Data records collected from the terminal will be written to the relevant data file

- On completion of the download press ENTER at the terminal to clear the stored data records from the terminal's memory, or ESC to exit from DOWNLOAD mode without clearing the memory

3.2 The Output Data File:

Stored Data records received from the terminal will be written to a simple text file.

Depending on the software configuration (see section 2.2.2) the filename will either be prompted for at download time, or will be automatically constructed by the software as follows:

STddmmyyyyhhmmss.TXT

Where

ST is a fixed 2 character 'header'
ddmmyyyyhhmmss is the date and time of the creation of the file.
and
.TXT is the filename extension

The exact format of the individual data records written to the file will depend in the configuration of the CPT8000 terminal and the STOCKTAKE download software as follows:

Generic data record format:

PPP...P, BBB...B, QQQ...Q, DD/MM/YYYY HH:MM:SS<d>

Where

If enabled {
 BBB...B is the Main Prompt data
 PPP...P is the Pre-Prompt data
 QQQ...Q is the Post Prompt data
 DD/MM/YY is the record date stamp
 HH:MM:SS is the record time stamp
and
 <d> is the record delimiter (either or both of the carriage return/ line feed characters as configured via the download software)

Example File (Both Pre- and Post- prompts and Date/Time stamp enabled):

A-12,1234562,25,09/04/2006 07:45:35
A-12,447121,5,09/04/2006 07:45:39
A-12,F66661A,189,09/04/2006 07:45:42
B-23,W-225-T,250,09/04/2006 07:46:02
B-23,245-121,47,09/04/2006 07:46:12
...