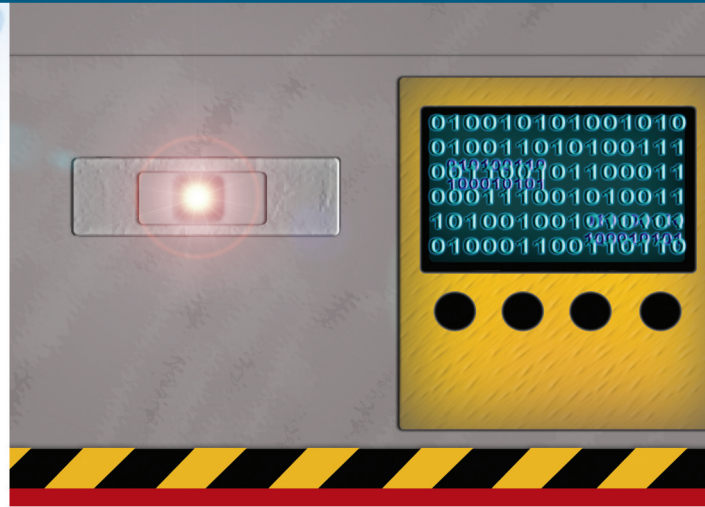


NLV 2101

Fixed Position
2D Barcode Imager



A compact and rugged fixed-position 2D barcode imager that uses Opticon's proprietary scan engine technology for quick and accurate results.

Product Features

Rugged Fixed-Position Design

The NLV 2101 is cased in a rugged metal housing and sealed to IP67 standards that holds up well in environments where high water and dust resistance is required.

Plug and Scan Installation

The NLV 2101 comes with mounting holes located on two sides of the compact housing to maximize mounting options and several interfaces that provide for fast integration.

Enhanced Floodlighting

High performance LEDs create sharper contrast between the code and the background allowing for faster reading and decoding by the 1.3 megapixel imager.

Integrated Auto Triggering

In addition to the standard software and manual trigger options, the NLV 2101 integrates an Auto Trigger that automatically initiates scanning of linear and 2D barcodes all in a compact form factor.

Ensure Data Accuracy

Embedded feature for scanning barcodes twice reduces discrepancies and ensures data accuracy even if the code is oriented in reverse.

Cabled

Wireless

Stationary

OEM

OPTICON
always scanning for new ID's

Specifications

NLV 2101 Fixed Position 2D Barcode Imager

Electrical specifications

Voltage requirement: 5 V ± 10%

Current consumption: max. 330 mA

Optical specifications

Light source: illumination 4 red LEDs 630 nm, aiming 2 green LEDs 527 nm

Scan method: CMOS area sensor

Scan rate: up to 30 fps

Curvature: R>15 mm (EAN8), R>20 mm (EAN13)

Reading width: depending on reading distance and barcode label resolution

Min. resolution at PCS 0.9: 0.127 mm / 5 mil, *0.169 mm / 7 mil*, at Code39 /

PDF417 and *Data Matrix*

Min. PCS value: 0.45

Depth of field: at PCS 0.9 *PDF417* and Code 39

52 - 202 mm / 2.05 - 7.95 in (res. 1.0 mm / 39 mil),

97 - 122 mm / 3.82 - 4.80 in (res. 0.5 mm / 20 mil),

52 - 232 mm / 2.05 - 9.13 in (res. 0.25 mm / 10 mil),

67 - 162 mm / 2.64 - 6.38 in (res. 0.15 mm / 6 mil),

97 - 122 mm / 3.82 - 4.80 in (res. 0.127 mm / 5 mil)

Field of view: horizontal: 47°, vertical: 37.5°

Communication specifications

Available interfaces: RS232C, Keyboard Wedge, USB(HID/VCP)

Identification

Supported barcode symbologies (1D): JAN/UPC/EAN (WPC) incl. add on, JAN/UPC/EAN (WPC) incl. add on, Chinese Post, Codabar/NW-7, Code 11, Code 39, Code 93, Code 128, IATA, Industrial 2of5, Interleaved 2of5, ISBN-ISMN-ISSN, Korean Postal Authority code, Matrix 2of5, MSI/Plessey-UK/Plessey, RSS, S-Code, Telepen, Tri-Optic, Composite codes

Supported 2D code symbologies: Aztec Code, Aztec Runes, Data Matrix (ECC200/EC0-140), Maxi Code (mode 2-5), MicroPDF417, Micro QR Code, PDF417, QR code

Environmental specifications

Temperature in operation: 0 to 45 °C / 32 to 113 °F

Temperature in storage: -20 to 60 °C / -4 to 140 °F

Humidity in operation: 20 - 85 % (non-condensing)

Humidity in storage: 20 - 90 % (non-condensing)

Ambient fluorescent light rejection: 10,000 lx max.

Ambient direct sun light rejection: 100,000 lx max.

Ambient incandescent light rejection: 10,000 lx max.

Antistatic electricity: 15 kV (non-destructive)

Shock drop test: 0.75 m / 2.5 ft drop onto concrete surface

Protection (dust and moisture, IEC529): IP 67

Physical specifications

Dimensions: 46 x 58 x 24.5 mm / 1.81 x 2.28 x 0.96 in

Case material: sheet metal

Weight body: Ca. 120 g / 4.2 oz (excl. cable)

Connector RS232: DB9 F-PTF with external power

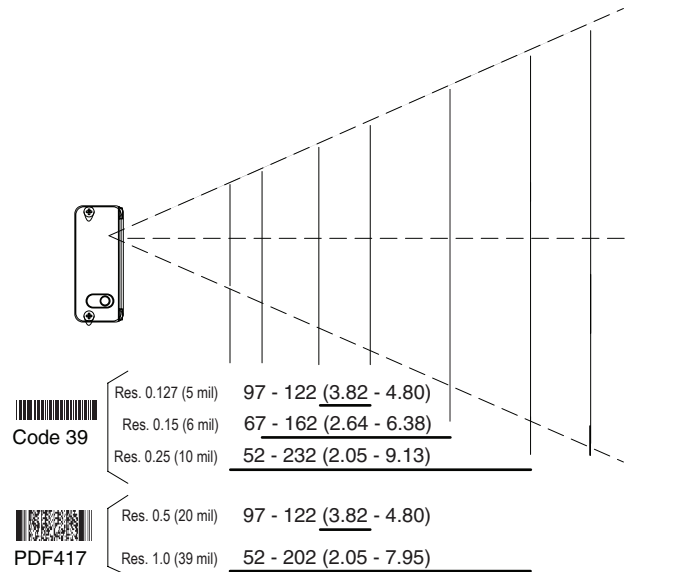
Connector USB: USB-A

Regulatory

Product compliance: CE, FCC, VCCI, RoHS

Depth of field

Unit: mm (in)



Dimensions

unit: mm (in)

