

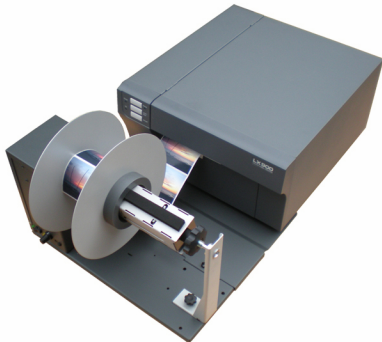


smart solutions for the labeling industry

Primera LX900e Rewinder

APPLICATIONS

The Primera LX900e Rewinder is used to rewind labels from a 3" core holder. The rewinder can handle labels up to 220mm wide and rewind rolls with external diameter up to 250mm.



POWER SUPPLY

An autoswitching 115/220Vac output 29 Vdc 2,5A power supply allows an electronic circuit to adjust the speed of rotation through the tension arm. A 2A fuse is used as protection.

OPERATING MODES

The feet of the printer must be leant onto the second base. In this way the correct rewinding operations are guaranteed and the unwinder is safely fastened to the printer.

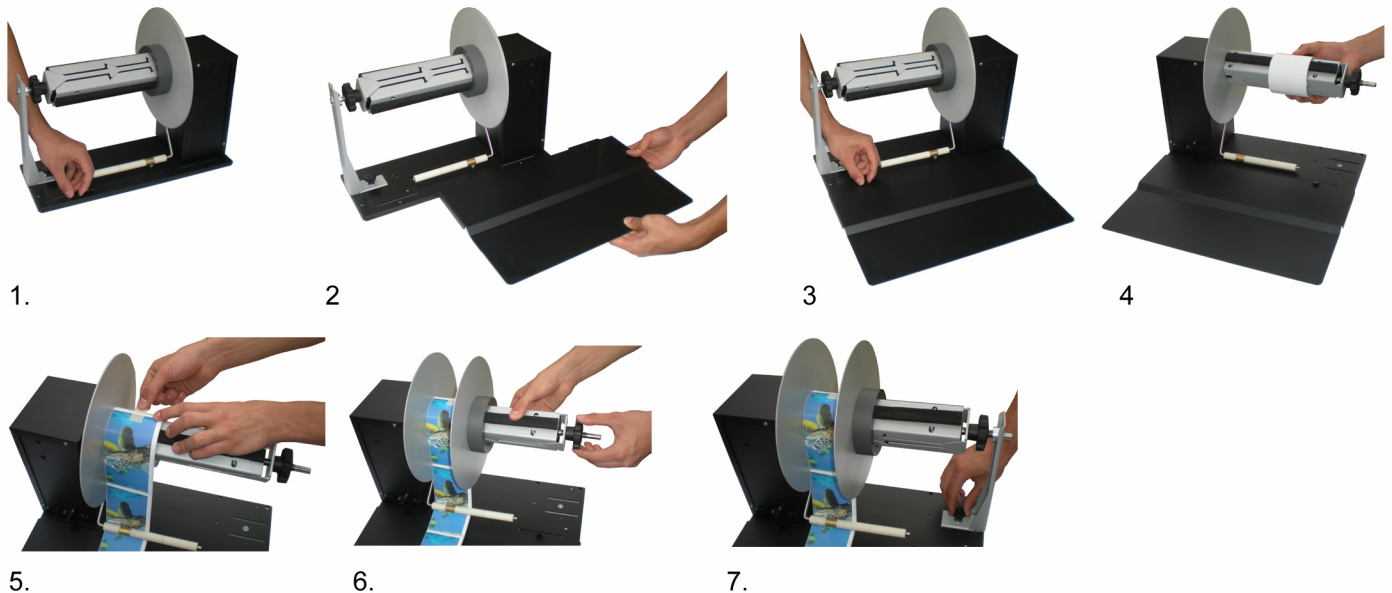
The Primera LX900e Rewinder has two types of speed adjustment: it is possible to set the main speed through a knob and the tension arm automatically adjusts the speed from zero up to the selected speed.

The position of the tension arm is calibrated as follows:

- When the tension arm is in a central position, the device is idle;
- When the tension arm is down, the device rewinds the labels;
- When the tension arm is up, the device unwinds the labels;

When the rewinding operations are finished, the rewinder stops thanks to the contact between the tension arm and the base and an acoustic signal sounds to let you know the rolls of labels is ready.

INSTALLATION



1. Remove the two knobs from the rewinder's base;
2. Insert the second base into the first one;
3. Use the two knobs to fasten the bases;
4. Load the core onto the core holder;
5. Fasten the label to the core;
6. Fasten the outer disc to the core (not too tight) and screw the knob;
7. Install the support and fasten it to the base through the knob.

