

SCANPAL™ EDA10A 10-INCH TABLET

Configuration Guide



HAND STRAP



DISPLAY BASE



QUAD CHARGER



EDA10A 5G Wi-Fi 6

THE
FUTURE
IS
WHAT
WE
MAKE IT

Honeywell

TABLE OF CONTENTS

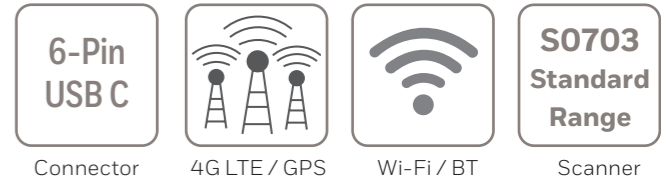
- 1 **TABLE OF CONTENTS**
- 2 **EDA10A FEATURE OVERVIEW**
S0703 STANDARD RANGE
NO SCANNER
- 4 **EDA10A CONFIGURATION MAP**
ANDROID
- 5 **HONEYWELL EDGE SERVICES**
GOLD REPAIR SERVICES - 3 YEAR
PLATINUM REPAIR SERVICES - 3 YEAR
EDA10A - REPAIR SERVICES COVERAGE
- 7 **EDA10A SOFTWARE**
DEVICE CLIENT PACK
- 8 **EDA10A PROTECTIVE BOOT**
PROTECTIVE BOOT
- 9 **EDA10A DESKTOP COMMUNICATIONS**
OPTION 1 – PORTABLE
OPTION 2 – FIXED
OPTION 3 - DISPLAY BASE
OPTION 4 - QUAD CHARGER
OPTION 5 - QUAD BATTERY CHARGER
- 12 **EDA10A VESA MOUNT**
STATIONARY MOUNTING
- 13 **EDA10A HEADSET**
EDA10A PUSH TO TALK (PTT) AND VOIP HEADSET

- 14 **MISCELLANEOUS**
OPTIONAL PARTS
MICRO-SD CARDS
AC CORDS



EDA10A FEATURE OVERVIEW

S0703 Standard Range

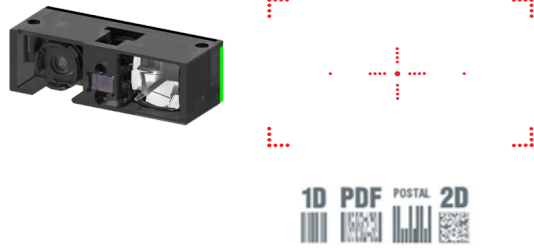


Included in the box:

- EDA10A Mobile Computer
- Battery (EDA10A-BAT)
- USB Type C cable



S0703 Standard Range



EDA10A Android - 5G WWAN 1 x eSIM & 1 x Nano SIM - S0703 - 8GB RAM/ 128GB Flash

EDA10A-11BE94N21xK EDA10A, 5G WWAN, Black Case, Wi-Fi 6 802.11 a/b/g/n/ac/ax, 2x2 MU-MIMO, BT5.1, 16MP Rear Camera / 8MP Front Camera, S0703 Standard Range, 8GB RAM/128GB Flash, USB Type C Port / eSIM & 1 x Nano SIM slot, NFC, 10.1 inch 1920 x 1200 Full High Definition Display, Android (GMS), 8,000mAh Standard Battery

EDA10A Android - 5G WWAN 1 x eSIM & 1 x Nano SIM - S0703 - 4GB RAM/ 64GB Flash

EDA10A-11BE64N21xK EDA10A, 5G WWAN, Black Case, Wi-Fi 6 802.11 a/b/g/n/ac/ax, 2x2 MU-MIMO, BT5.1, 16MP Rear Camera / 8MP Front Camera, S0703 Standard Range, 4GB RAM/64GB Flash, USB Type C Port / eSIM & 1 x Nano SIM slot, NFC, 10.1 inch 1920 x 1200 Full High Definition Display, Android (GMS), 8,000mAh Standard Battery

EDA10A Android - Wi-Fi Only - S0703 - 8GB RAM/ 128GB Flash

EDA10A-00BE91N21xK EDA10A, WLAN, Black Case, Wi-Fi 6 802.11 a/b/g/n/ac/ax, 2x2 MU-MIMO, BT5.1, 16MP Rear Camera / 8MP Front Camera, S0703 Standard Range, 8GB RAM/128GB Flash, USB Type C Port, NFC, 10.1 inch 1920 x 1200 Full High Definition Display, Android (GMS), 8,000mAh Standard Battery

EDA10A Android - Wi-Fi Only - S0703 - 4GB RAM/ 64GB Flash

EDA10A-00BE61N21xK EDA10A, WLAN, Black Case, Wi-Fi 6 802.11 a/b/g/n/ac/ax, 2x2 MU-MIMO, BT5.1, 16MP Rear Camera / 8MP Front Camera, S0703 Standard Range, 4GB RAM/64GB Flash, USB Type C Port, NFC, 10.1 inch 1920 x 1200 Full High Definition Display, Android (GMS), 8,000mAh Standard Battery

Note: Not all tablet combinations are available in every region. Check your local Price Book to see which part numbers are available for sale.

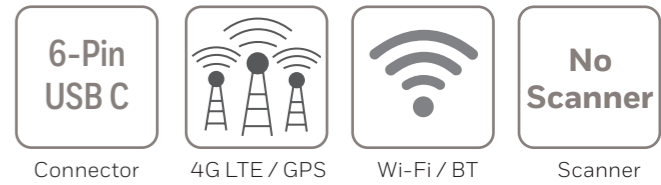
(Note: x = Region, select appropriate Region from Configuration Map on page 4)

Honeywell Repair Services

SVCEDA10-SG3N	EDA10A, Edge Service, Gold Maintenance Contract, 3 Year, New Contract
ADD SVCREPLACE-MOB3	AddOn, Edge Service, Device Replacement, Mobility, 3 Year

EDA10A FEATURE OVERVIEW

No Scanner



Included in the box:

- EDA10A Mobile Computer
- Battery (EDA10A-BAT)
- USB Type C cable



EDA10A Android - 5G WWAN 1 x eSIM & 1 x Nano SIM - No Scanner - 8GB RAM/ 128GB Flash

EDA10A-11B094N21xK EDA10A, 5G WWAN, Black Case, Wi-Fi 6 802.11 a/b/g/n/ac/ax, 2x2 MU-MIMO, BT5.1, 16MP Rear Camera / 8MP Front Camera, No Scanner, 8GB RAM/128GB Flash, USB Type C Port / eSIM & 1 x Nano SIM slot, NFC, 10.1 inch 1920 x 1200 Full High Definition Display, Android (GMS), 8,000mAh Standard Battery

EDA10A Android - 5G WWAN 1 x eSIM & 1 x Nano SIM - No Scanner - 4GB RAM/ 64GB Flash

EDA10A-11B064N21xK EDA10A, 5G WWAN, Black Case, Wi-Fi 6 802.11 a/b/g/n/ac/ax, 2x2 MU-MIMO, BT5.1, 16MP Rear Camera / 8MP Front Camera, No Scanner, 4GB RAM/64GB Flash, USB Type C Port / eSIM & 1 x Nano SIM slot, NFC, 10.1 inch 1920 x 1200 Full High Definition Display, Android (GMS), 8,000mAh Standard Battery

EDA10A Android - Wi-Fi Only - No Scanner - 8GB RAM/ 128GB Flash

EDA10A-00B091N21xK EDA10A, WLAN, Black Case, Wi-Fi 6 802.11 a/b/g/n/ac/ax, 2x2 MU-MIMO, BT5.1, 16MP Rear Camera / 8MP Front Camera, No Scanner, 8GB RAM/128GB Flash, USB Type C Port, NFC, 10.1 inch 1920 x 1200 Full High Definition Display, Android (GMS), 8,000mAh Standard Battery

EDA10A Android - Wi-Fi Only - No Scanner - 4GB RAM/ 64GB Flash

EDA10A-00B061N21xK EDA10A, WLAN, Black Case, Wi-Fi 6 802.11 a/b/g/n/ac/ax, 2x2 MU-MIMO, BT5.1, 16MP Rear Camera / 8MP Front Camera, No Scanner, 4GB RAM/64GB Flash, USB Type C Port, NFC, 10.1 inch 1920 x 1200 Full High Definition Display, Android (GMS), 8,000mAh Standard Battery

Note: Not all tablet combinations are available in every region. Check your local Price Book to see which part numbers are available for sale.

(Note: x = Region, select appropriate Region from Configuration Map on page 4)

Honeywell Repair Services

SVCEDA10-SG3N

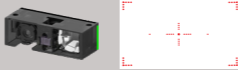
EDA10A, Edge Service, Gold Maintenance Contract, 3 Year, New Contract

ADD SVCREPLACE-MOB3

AddOn, Edge Service, Device Replacement, Mobility, 3 Year

EDA10A CONFIGURATION MAP

Android

EDA10A-										DESCRIPTION	NOTES
RADIO	CAMERA	IMAGER	MEMORY	CONNECTOR	NFC	OPERATING SYSTEM	APPLICATION	REGION	KITTING		
00										Black Case - Wi-Fi 6 802.11 a/b/g/n/ac/ax + Bluetooth 5.1, 2x2 MU-MIMO	IEEE 802.11 a/b/g/n/ac/ax/d/e/h/i/k/r/u/w/v ; Wi-Fi certified V5.1 Bluetooth
11										Black Case - 5G, LTE (4G) GPS, UMTS/HSPA+ (3G) GSM/GPRS/EDGE Wi-Fi 6 802.11 a/b/g/n/ac/ax + Bluetooth 5.1, 2x2 MU-MIMO	WWAN RADIO 5G NR SA: 1,2,3,5,7,8,20,25,26,28,38,40,41,66,77,78 5G NR NSA: 41,77,78 TDD-LTE: BANDS 34/38,39,40,41,42,43 FDD-LTE: BANDS 1,2,3,4,5,7,8,12,13,17,19,20,25,26,28,66 UMTS/HSPA+ (3G) - BANDS 1,2,4,5,6,8,19 / GSM/GPRS/EDGE QUAD-BAND (850/900/1800/1900 MHZ)
	B									16MP Rear Camera / 8MP Front Camera	
		0								No Scanner	
			E							1D/2D Imager (S0703SR) - Standard Range	
				6						4GB RAM, 64GB Flash Memory	Qualcomm Snapdragon SM4350-AC Octa-Core, up to 2.2GHz
					9					8GB RAM, 128GB Flash Memory	Qualcomm Snapdragon SM4350-AC Octa-Core, up to 2.2GHz
						1				6-Pin / USB Type C Port / No SIM	
							4			6-Pin / USB Type C Port / eSIM & 1 x Nano SIM slot	
								N		Near Field Communications (NFC)	
						1				Android (Non-GMS)	
							2			Android (GMS)	Google Mobile Services (GMS) certified - Play Store
								1		Standard Software	Includes 1-Year Device Client Pack Term License
									R	Rest of World	
										K	Kit - Suzhou



HONEYWELL EDGE SERVICES

EDA10A – Repair Services

Honeywell Edge Services give you the confidence of having leading-class technologies combined with service and support plans that are designed to keep you operational for longer.

For a full description of maintenance services, including terms and conditions, please see <https://sps.honeywell.com/us/en/services/productivity/support-services/maintenance-services>

Gold Repair Services – 3 Year

The most flexible contract in the industry. The Edge Services Gold Support contract allows you to select the right coverage for your organization, including 5-Day Depot Repairs and:

Service Overview

- Repair or replacement of damaged components, wear and tear, and accidental damage.
- Flexibility to add any Add-On Service
- Android Service - includes Android OS Upgrades, Maintenance Releases and Security Patches

PART NUMBER	DESCRIPTION
SVCEDA10-SG3N	EDA10A, Edge Service, GOLD Maintenance Contract, 5 Day Turnaround, 3 Year , New Contract

Add-On Accessory Replacement Service

Provides replacement chargers, docks, charging cables, or scan handles should they be damaged or stop working.

ADD SVCACC-MOB3	AddOn, Edge Service, Accessory Service , Mobility, 3 Year . Service covers docks, charger cradles, scan handles
------------------------	--

Add-On Battery Replacement Service

Provides replacement batteries every 18 months after purchase.

ADD SVCBATTERY-MOB3	AddOn, Edge Service, Battery Service, Mobility, 3 Year , 1 Replacement Battery over life of contract
----------------------------	---

Add-On Device Replacement Service

Replacement devices should a device be damaged beyond repair.

ADD SVCREPLACE-MOB3	AddOn, Edge Service, Device Replacement, Mobility, 3 Year
----------------------------	--

Add-On Image Management Service

Ensures that when a device returns from being repaired, it has all the proper applications loaded back on the device.

ADD SVCIMAGEMGMT-MOB3	AddOn, Edge Service, Image Service, Mobility, 3 Year
------------------------------	---

Add-On Spare Management Service

Manages every aspect of your spare pool.

ADD SVCSPAREMGMT-MOB3	AddOn, Edge Service, Advanced Exchange, Mobility, 3 Year . Customer owned spare pool, Minimum Purchase required, contact your local Honeywell Service Representative for more information.
------------------------------	---

Platinum Repair Services – 3 Year

The Edge Services Platinum Support contract is the only total support contract in the industry today offering 2-Day Depot Repairs or Spare Pool Management with 3-year contract, that includes:

Service Overview

- Repair or replacement of damaged components
- SVCREPLACE-MOB3 - Replacement devices should a device be damaged beyond repair
- SVCACC-MOB3 - Accessory replacement service
- SVCBATTERY-MOB3 - Battery replacement service
- SVCSPAREMGMT-MOB3 - Spare pool management (optional, minimum quantity required)
- Telephone-based technical support
- Android Service - includes Android OS Upgrades, Maintenance Releases and Security Patches

PART NUMBER	DESCRIPTION
SVCEDA10-SP3N	EDA10A, Edge Service, PLATINUM, 2 Day Turnaround, 3 Year, New Contract

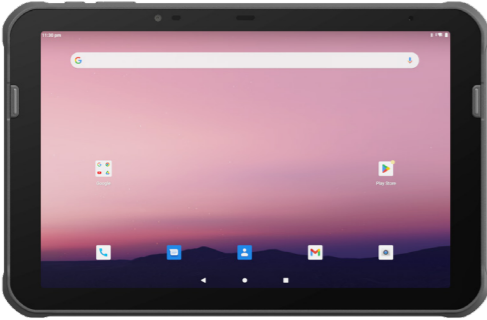


HONEYWELL REPAIR SERVICES

EDA10A – Repair Services Coverage

Service options tailored to customer requirements

EDA10A



Warranty Cover Against Product Defect

BASIC Service

Gold Coverage:

- Accidental Damage
- Wear & Tear
- Android Service

Includes Replacement of:

- Screen Protector

Flexible GOLD Add-Ons ordered separately


- SVCACC-MOB3 Accessories
- SVCBATTERY-MOB3 Batteries
- SVCREPLACE-MOB3 Device Replacement
- SVCIMAGEMGMT-MOB3 Image Service
- SVCSPAREMGMT-MOB3 Advanced Exchange

GOLD Service


Platinum Coverage

- Battery Replacement
- Coverage for Docks/ Chargers
- Android Service


- Accidental Damage
- Device Replacement
- Wear & Tear




Protective Boot




Chargers



Battery
(3 Year – 1 replacement battery per EDA10A)



Docks



Dock Power Supplies

COVERAGE	PART NUMBER	DESCRIPTION
BASIC	SVCEDA10-EXW3	EDA10A, BASIC, 10-15 Day Turnaround, 3 Years (1 Year Factory Warranty + 2 Year Extended)
GOLD	SVCEDA10-SG3N	EDA10A, Edge Service, GOLD Maintenance Contract, 5 Day Turnaround, 3 Year, New Contract
ADD	SVCACC-MOB3	AddOn, Edge Service, Accessory Service, Mobility, 3 Year. Service covers docks, charger cradles, scan handles and car adapter
ADD	SVCBATTERY-MOB3	AddOn, Edge Service, Battery Service, Mobility, 3 Year, 1 Replacement Battery over life of contract
ADD	SVCREPLACE-MOB3	AddOn, Edge Service, Device Replacement, Mobility, 3 Year
ADD	SVCIMAGEMGMT-MOB3	AddOn, Edge Service, Image Service, Mobility, 3 Year
ADD	SVCSPAREMGMT-MOB3	AddOn, Edge Service, Advanced Exchange, Mobility, 3 Year. Customer owned spare pool, Minimum Purchase required.
PLATINUM	SVCEDA10-SP3N	EDA10A, Edge Service, PLATINUM, 2 Day Turnaround, 3 Year, New Contract

ScanPal EDA10A Tablet Configuration Guide | www.honeywellaidc.com | 6

EDA10A SOFTWARE

Device Client Pack

The Device Client Pack (DCP) includes Launcher, Enterprise Browser, BasicTE, and Mobility Web SDK, these applications are pre-loaded on the device.

All EDA10A units include a 1 Year DCP Termed Pre-License for initial evaluation of the DCP applications (it does NOT include a Perpetual Pre-License), after the 1 Year Term period expires, a Perpetual or Term license is required to be purchased.

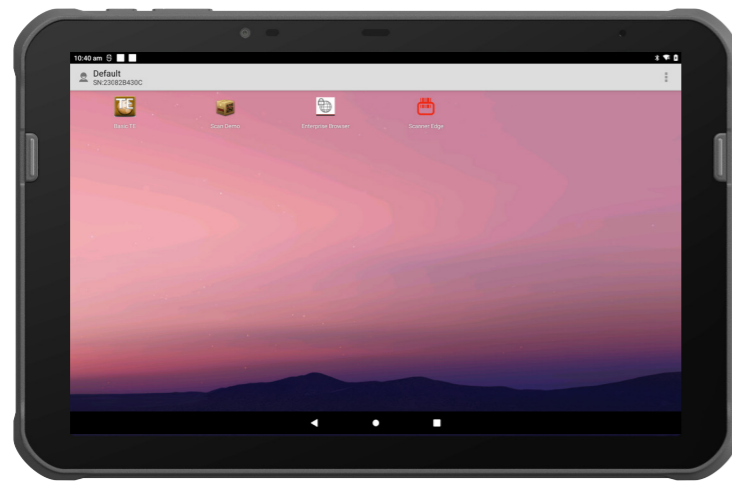
There are two licensing options that can be purchased for DCP:

1. Perpetual License Purchase DCP-001 - Perpetual Licenses operate without expiration for the authorized software version features, and includes 1 year of Maintenance. Add additional Software Maintenance separately.
2. Term + Maintenance License Purchase DCP-SFT1, DCP-SFT2, DCP-SFT3, DCP-SFT4 or DCP-SFT5 - Term + Maintenance Licenses provide software operation, software new version features, and tech support, all for a defined period.

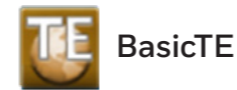
Device Client Pack



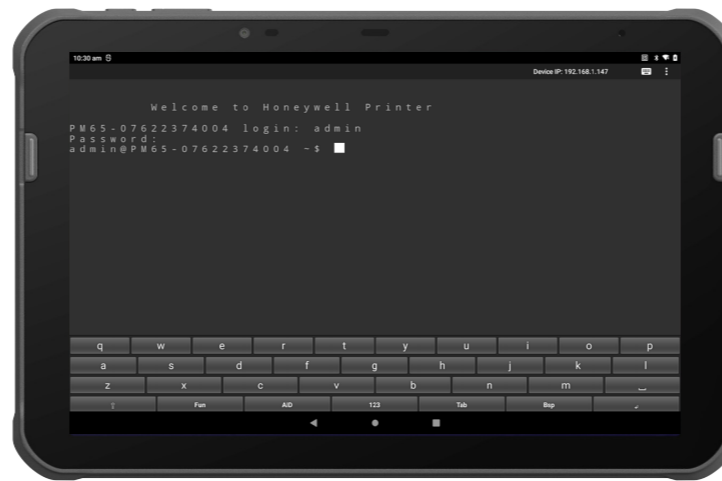
Launcher



Launcher - gives the customer total control over which apps can be run on the device.



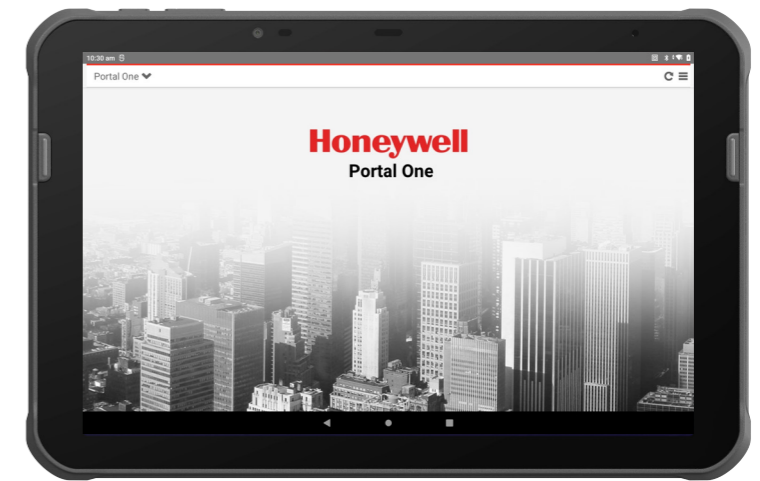
BasicTE



BasicTE Android device Terminal Emulation is a simplified alternative for those not yet ready to upgrade to SmartTE.



Enterprise Browser



Enterprise Browser provides corporations the ability to run standard web applications from a controlled environment.

PART NUMBER	DESCRIPTION
DCP-001	Device Client Pack Perpetual License (DCP) includes 1 Year Software Maintenance. License covers Launcher, Enterprise Browser, BasicTE, and Mobility Web SDK. Purchase DCP-SFTx prior to maintenance expiring.
DCP-SFT1	Device Client Pack - 1 Year Term + Maintenance (Launcher, Enterprise Browser & BasicTE)
DCP-SFT2	Device Client Pack - 2 Year Term + Maintenance (Launcher, Enterprise Browser & BasicTE)
DCP-SFT3	Device Client Pack - 3 Year Term + Maintenance (Launcher, Enterprise Browser & BasicTE)
DCP-SFT4	Device Client Pack - 4 Year Term + Maintenance (Launcher, Enterprise Browser & BasicTE)
DCP-SFT5	Device Client Pack - 5 Year Term + Maintenance (Launcher, Enterprise Browser & BasicTE)

EDA10A PROTECTIVE BOOT

Protective Boot

EDA10A with Protective Boot is compatible with any terminal charger EDA10A-SC-R (Single Charge Dock) or EDA10A-DB-x (Display Base) when protective boot is installed.
 EDA10A with Protective Boot is compatible with the handstrap and stylus.



1

PART NUMBER	DESCRIPTION
1 EDA10A-RB-0	EDA10A Protective boot

EDA10A DESKTOP COMMUNICATIONS

Option 1 – Portable

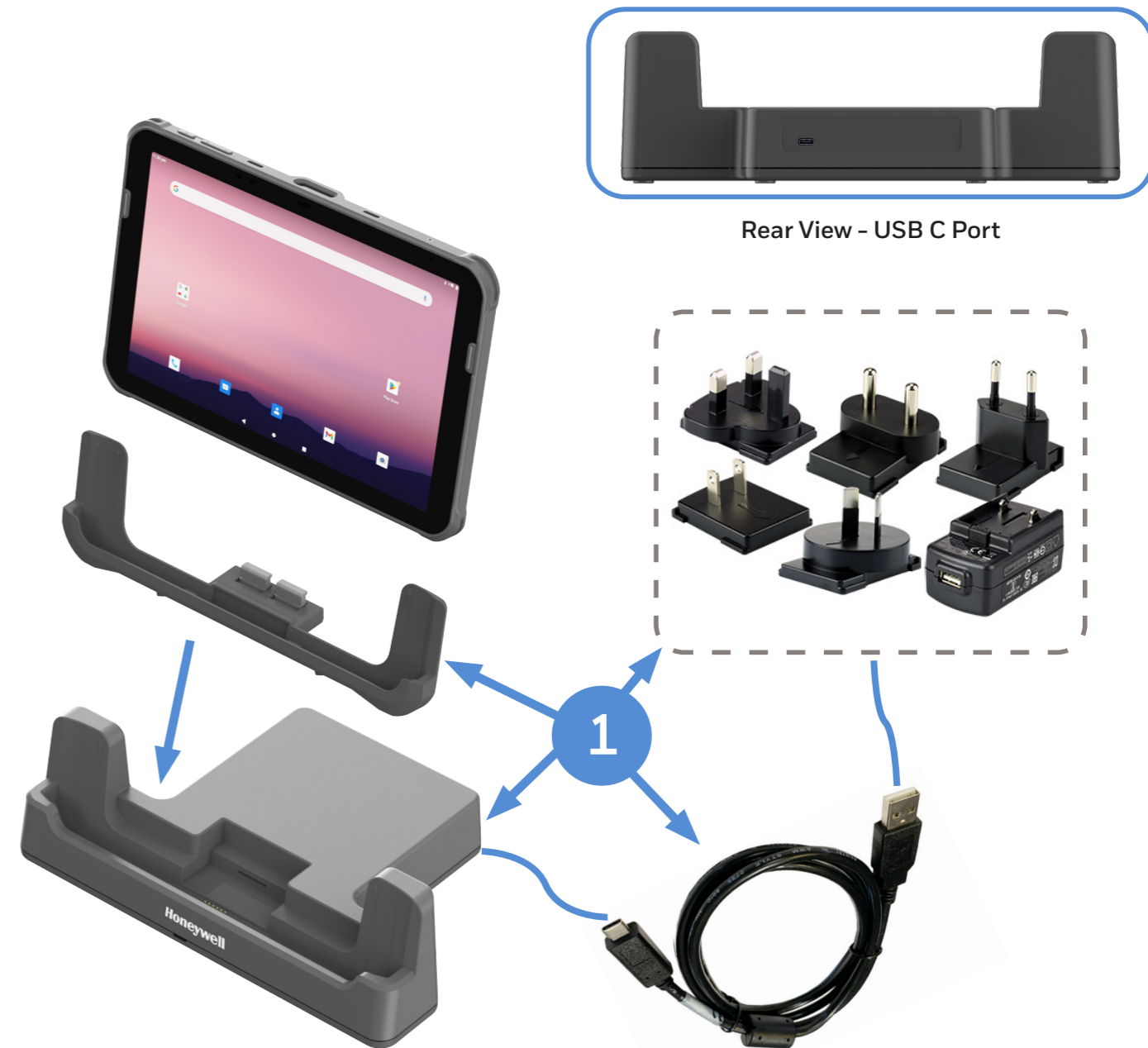
USB Communication to PC/ Mac OR USB C Charging.
Compatible with EDA10A-RB-0 Protective Boot.



PART NUMBER	DESCRIPTION
1	CBL-500-120-S00-06 USB type A to type C, 1.2 m (3.9 ft)
2	50136024-001 KIT,5V/2A PS,5 PLUGS PACKED, ROW Includes US,UK,AU,EU,IN adapters

Option 2 – Fixed

USB C charging.
Compatible with EDA10A-RB-0 Protective Boot by removing the EDA10A-ADC adapter cup.

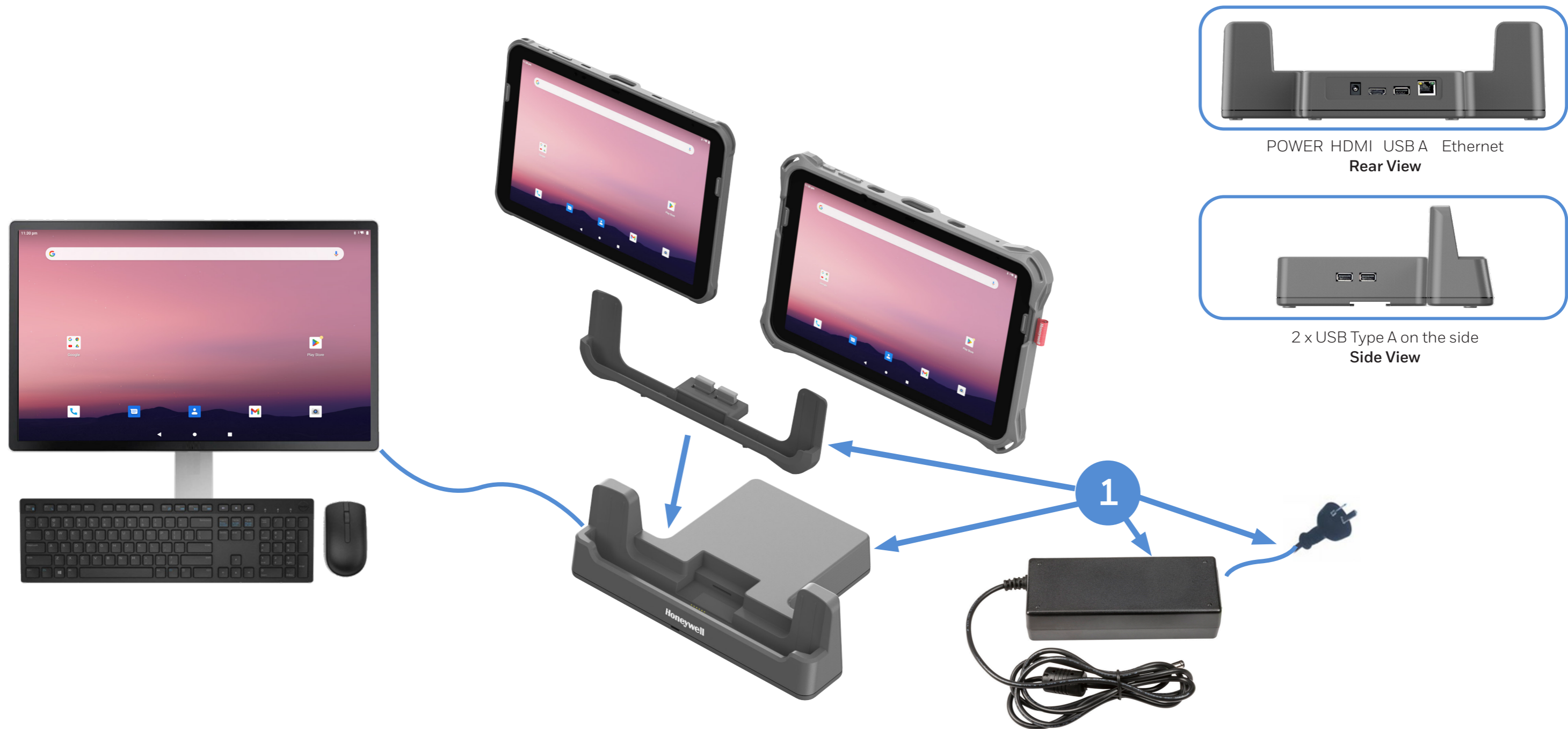


PART NUMBER	DESCRIPTION
1	EDA10A-SC-R EDA10A Single Charging Dock, kit includes: Dock, USB C Cable, 5V 2A power adapter and plugs.

EDA10A DESKTOP COMMUNICATIONS

Option 3 - Display Base

Connect USB peripherals (keyboard, mouse) and External Monitor via HDMI.
Compatible with EDA10A-RB-0 Protective Boot by removing the EDA10A-ADC adapter cup.

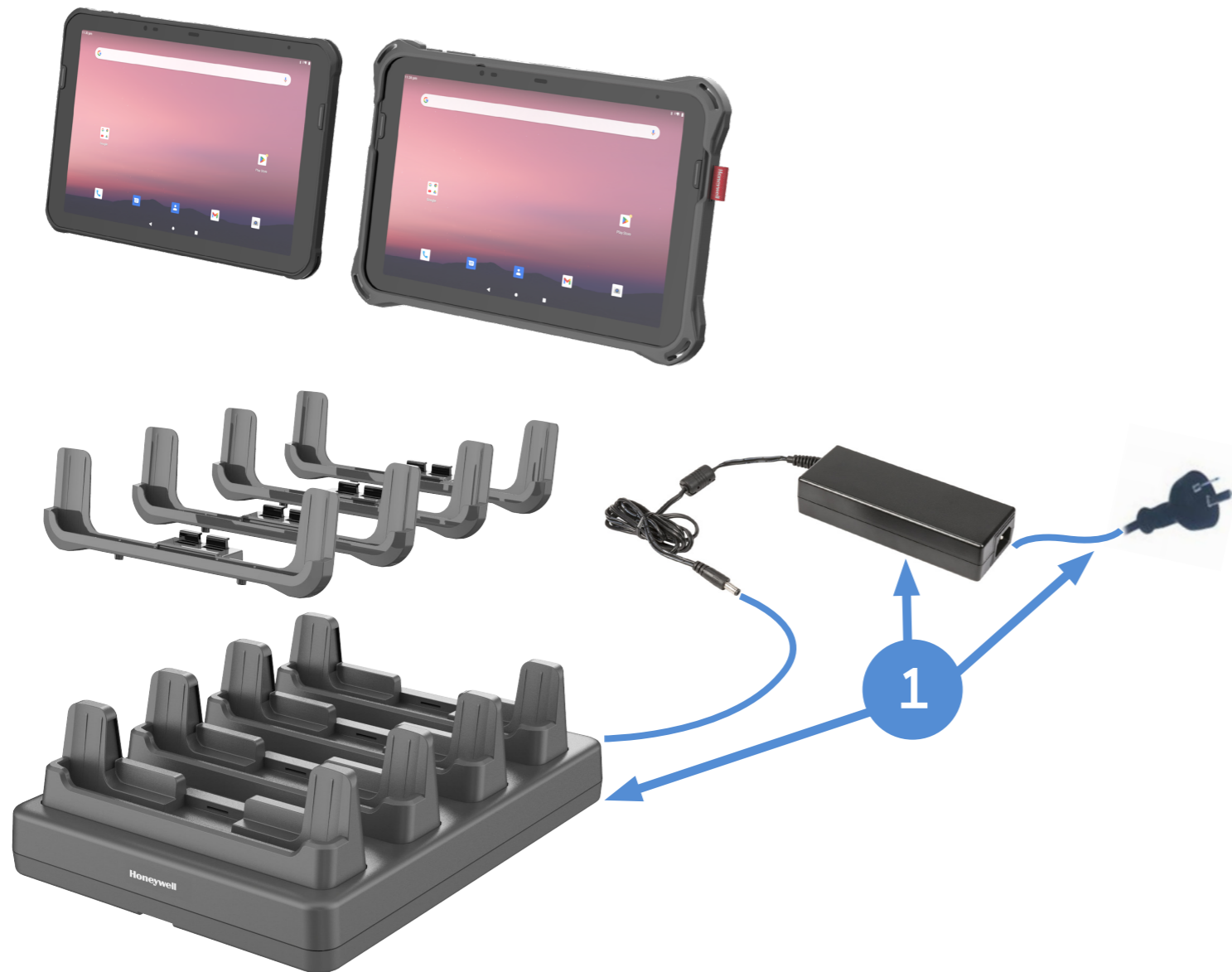


PART NUMBER	DESCRIPTION
1	EDA10A-DB-1 Display Dock - Kit includes Display Base, Adapter Cup & Power Supply, North America Power Cord
OR	EDA10A-DB-2 Display Dock - Kit includes Display Base, Adapter Cup & Power Supply, EU Power Cord
OR	EDA10A-DB-3 Display Dock - Kit includes Display Base, Adapter Cup & Power Supply, United Kingdom Power Cord
OR	EDA10A-DB-5 Display Dock - Kit includes Display Base, Adapter Cup & Power Supply, Australia Power Cord

EDA10A DESKTOP COMMUNICATIONS

Option 4 - Quad Charger

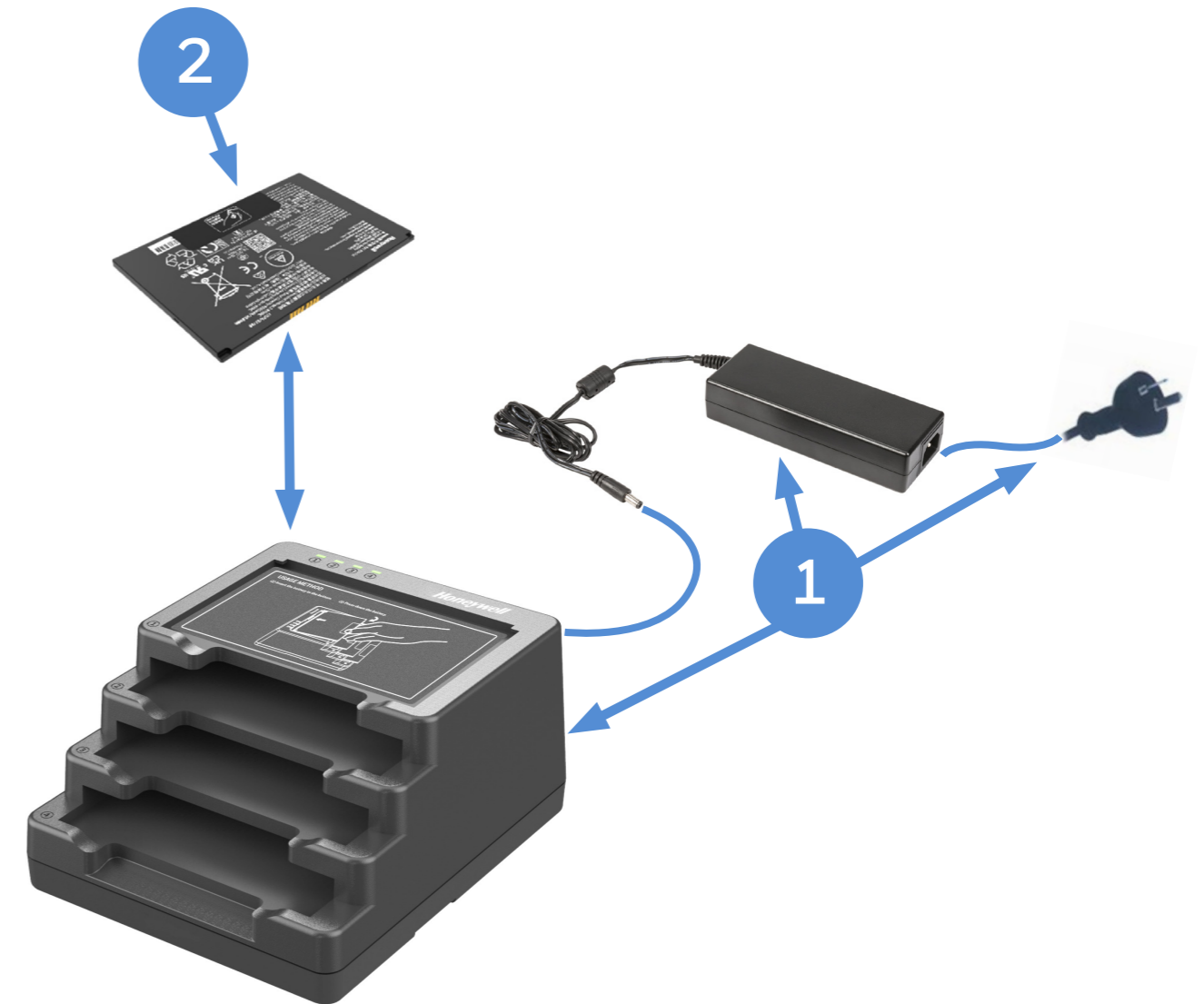
Chargebase – Quad Dock Charge Only
 Compatible with EDA10A-RB-0 Protective Boot by removing the EDA10A-ADC adapter cup.



PART NUMBER	DESCRIPTION
1 EDA10A-CB-1	EDA10A Charging Base - Kit includes Dock, Power Supply and North America Power Cord
OR EDA10A-CB-2	EDA10A Charging Base - Kit includes Dock, Power Supply and EU Power Cord
OR EDA10A-CB-3	EDA10A Charging Base - Kit includes Dock, Power Supply and United Kingdom Power Cord
OR EDA10A-CB-5	EDA10A Charging Base - Kit includes Dock, Power Supply and Australia Power Cord

Option 5 - Quad Battery Charger

Charge up to 4 batteries simultaneously
 Supports Batteries: EDA10A-BAT - Battery, Standard, ScanPal EDA10A (8000mAh)

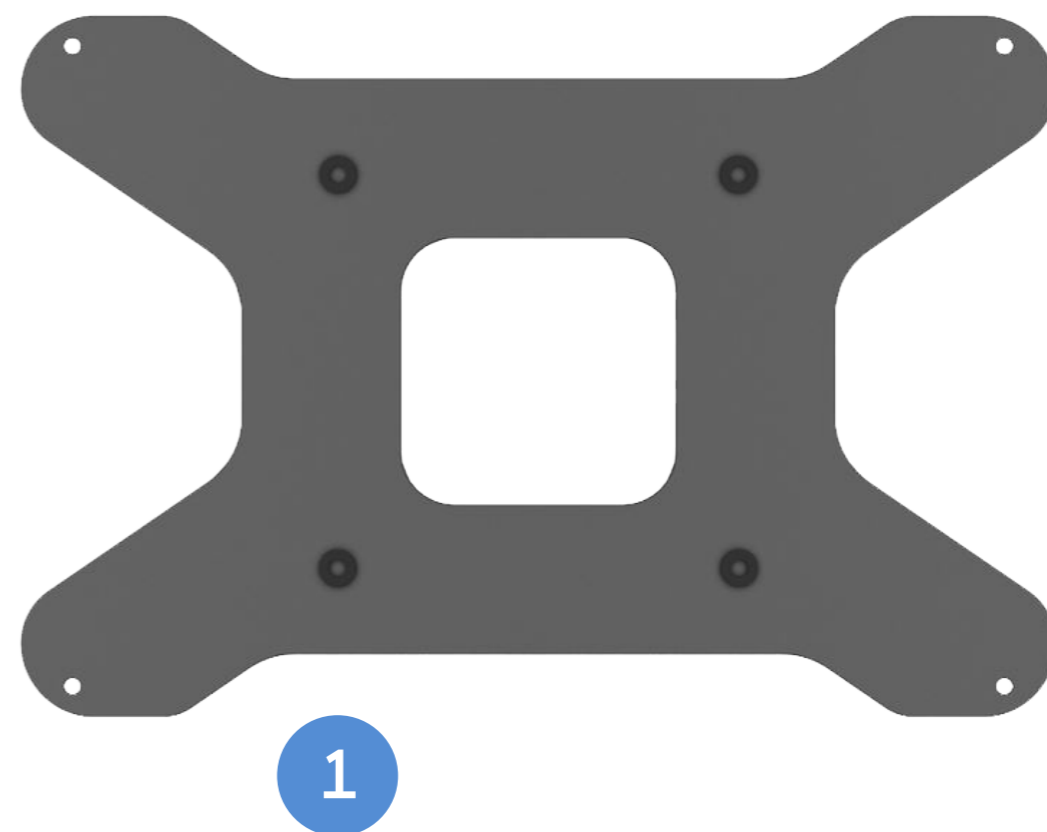
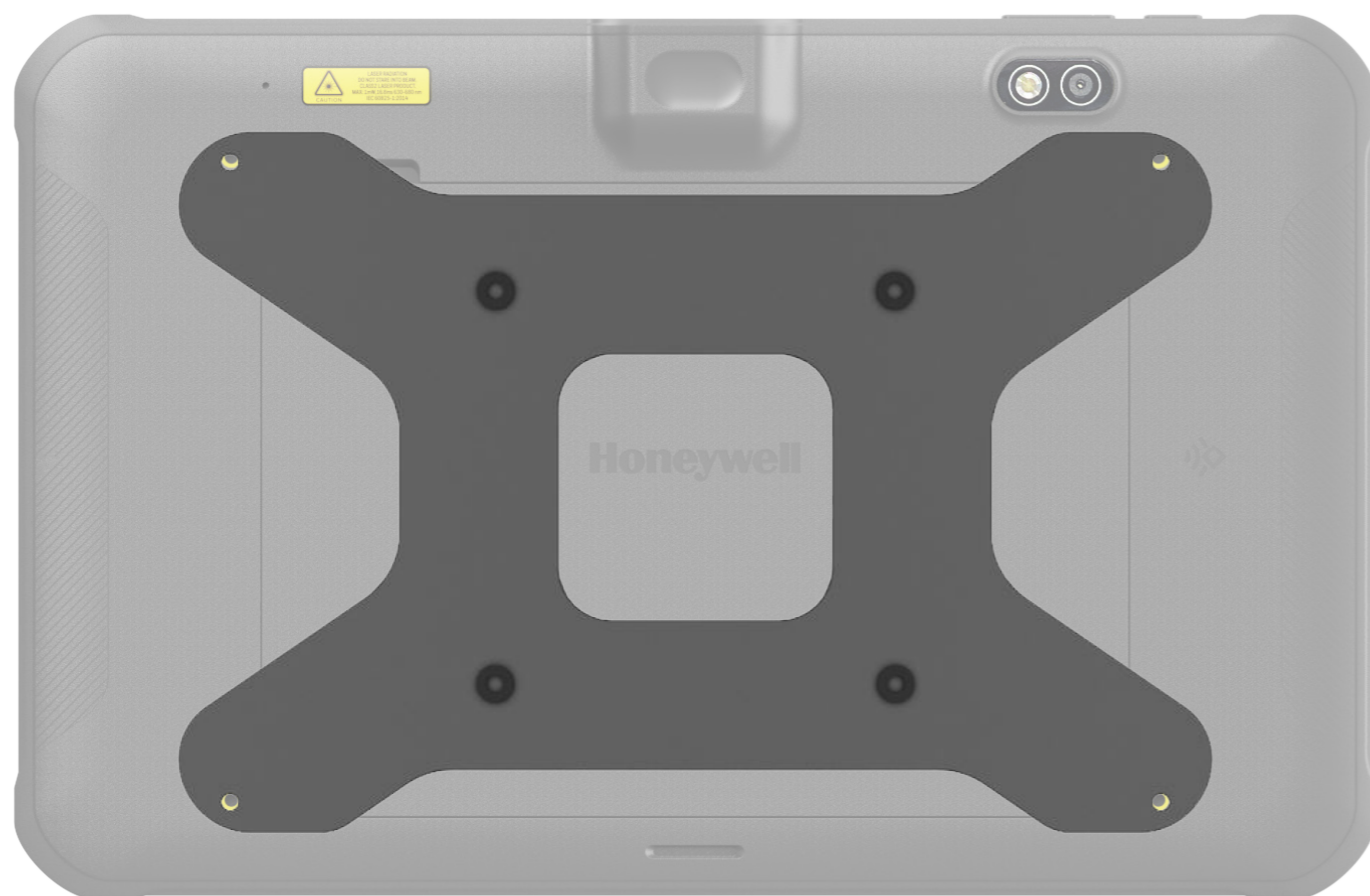


PART NUMBER	DESCRIPTION
1 EDA10A-QBC-1	Quad Battery Charger - Kit includes Dock, Power Supply and North America Power Cord
OR EDA10A-QBC-2	Quad Battery Charger - Kit includes Dock, Power Supply and EU Power Cord
OR EDA10A-QBC-3	Quad Battery Charger - Kit includes Dock, Power Supply and United Kingdom Power Cord
OR EDA10A-QBC-5	Quad Battery Charger - Kit includes Dock, Power Supply and Australia Power Cord
2 EDA10A-BAT	EDA10A Battery (3.8V, 8,00mAh)

EDA10A VESA MOUNT

Stationary Mounting

VESA Mount for permanent mounting of the EDA10A, used in combination with USB C power supply as the plate restricts access to the battery.



	PART NUMBER	DESCRIPTION
1	EDA10A-MNT-VS	75x75mm VESA mount kit. Includes M3 screws

EDA10A HEADSET

EDA10A Push To Talk (PTT) and VoIP Headset

PTT and VoIP ready to support In-Store Communication with leading 3rd party applications.



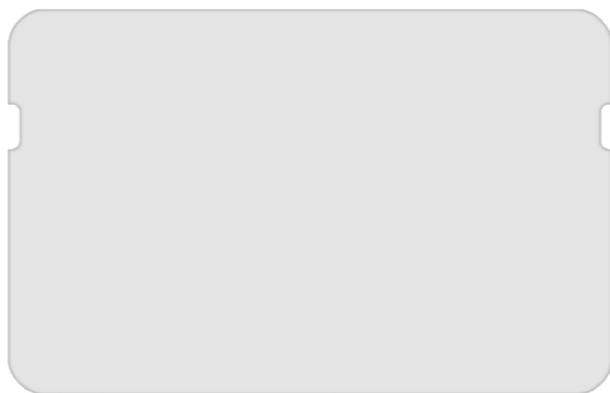
PART NUMBER	DESCRIPTION
1	MBL-HDST-USBC EDA52, EDA56, EDA57 Headset with PTT, USB C

MISCELLANEOUS

Optional Parts



PART NUMBER	DESCRIPTION
EDA10A-CASE	EDA10A carrying case (includes strap)



PART NUMBER	DESCRIPTION
EDA10A-SP-1PK	EDA10A screen film, (5 pack)



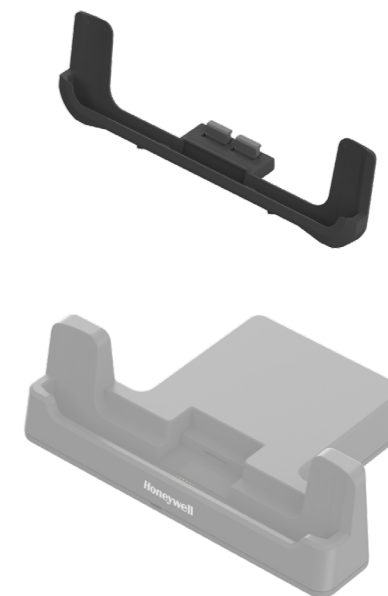
PART NUMBER	DESCRIPTION
CBL-500-120-S00-06	USB type A to type C, 1.2 m (3.9 ft)



PART NUMBER	DESCRIPTION
EDA10A-SS-1PK	EDA10A shoulder strap, 1 piece/kit Requires EDA10A-RB-0 protective boot to attach to EDA10A.



PART NUMBER	DESCRIPTION
EDA10A-DCLIP-1PK	EDA10A D-clips, 2 pieces/kit



PART NUMBER	DESCRIPTION
EDA10A-ADC	EDA10A adapter cup, for usage of EDA10A-SC, EDA10A-DB without Protective Boot installed

MISCELLANEOUS

Optional Parts



PART NUMBER	DESCRIPTION
EDA10A-STL-1PKC	Stylus for EDA10A (1 pack) - Requires EDA10A-RB-0 protective boot or EDA10A-HS-1K hand strap to attach to EDA10A.



PART NUMBER	DESCRIPTION
EDA10A-RB-0	EDA10A Protective boot



PART NUMBER	DESCRIPTION
EDA10A-HS-1PK	EDA10A rotating hand strap, 1pcs/kit



PART NUMBER	DESCRIPTION
50136024-001	KIT,5V/2A PS,5 PLUGS PACKED, ROW Includes US,UK,AU,EU,IN adapters



PART NUMBER	DESCRIPTION
50121666-001	Power Adapter,12V 3A, No Power Cord, Compatible with EDA10A-DB-x Display Base

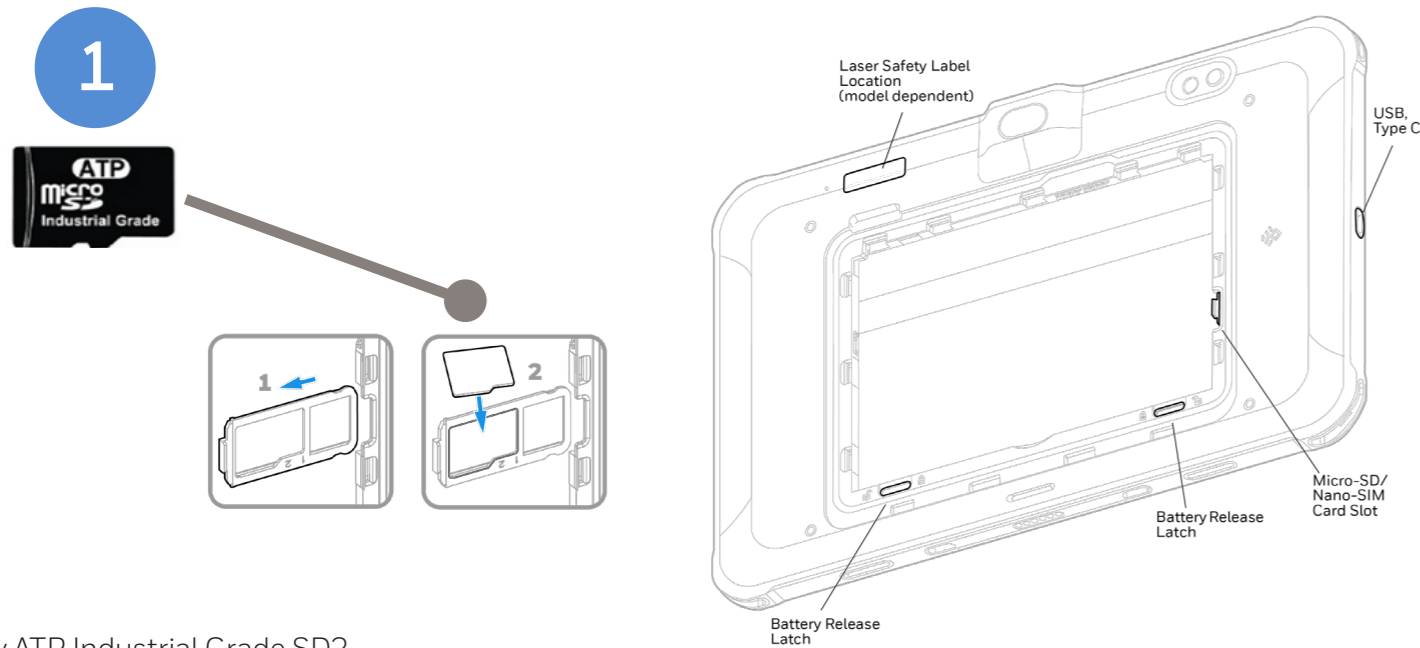


PART NUMBER	DESCRIPTION
50121667-001	Power Adapter,12V 7A, No Power Cord, EDA10A-CB-x Quad Chargebase or EDA10A-QBC-x Quad Battery Charger

MISCELLANEOUS

Micro-SD Cards

Honeywell Recommended – ATP Industrial Grade Micro SD Cards



Why ATP Industrial Grade SD?

ATP's SIP (System-In-Packaging) manufacturing process encapsulates all exposed components and points of failure to ensure the products are fully waterproof, shockproof, and ESD (Electro-Static Discharge) proof. ATP Industrial Grade SD/SDHC Cards can withstand at least an operating/storage temperature range of at least -40 to 85 degrees Celsius. In addition to this temperature range, the cards are completely waterproof, dustproof, and ESD (Electro-Static Discharge) proof. All ATP Industrial Grade SD/SDHC cards are produced under a stringent RoHS and Green Package compliant manufacturing process to guarantee a consistent high level of build quality and performance. ATP Industrial SD cards deliver outstanding performance with read speed (seq) up to 18MB/sec and write speed (seq) up to 16MB/sec. All ATP Industrial Grade CF, SD, USB drives, and SSDs are constructed using best-in-class SLC(Single-Level Cell) components with enhanced Error Correction Code(ECC) functions and wear levelling algorithms. This results in MTBF ratings over 2 million hours and the highest write cycle lifetimes in the industry.

	PART NUMBER	DESCRIPTION
1	856-065-004	MICRO-SD CARD, 1GB, AFIGUDI, ROHS
OR	856-065-005	MICRO-SD CARD, 2GB, AFIGUDI, ROHS
OR	856-065-006	MICRO-SD CARD, 4GB, AFIGUDI, ROHS
OR	856-065-007	MICRO-SD CARD, 8GB, AFIGUDI, ROHS

AC Cords

Regional Power Cords



AC Power - C13 Type Connector

PART NUMBER	DESCRIPTION
50117501-001	POWER CORD AUSTRALIA 2500MM,SLED CB
321-501-002	AC Power Cord, Denmark RoHS
77900508E	Cable: power cord, power supply to AC outlet, straight, Power cord, Europe EU, IEC320-C13, 2.5 m (8.2 ft)
321-502-002	AC Power Cord, India/South Africa RoHS
321-500-002	AC Power Cord, Japan RoHS
9000093CABLE	AC POWER CABLE, C14 TYPE, SWITZERLAND 3-PIN
77900507E	Cable: power cord, power supply to AC outlet, straight - Power cord, UK, IEC320-C13, 2.5 m (8.2 ft)
130063	Cable, power cord, power supply to AC outlet, straight (US type B grounded 3 prong, C13), 2.5m (8.2ft)

MISCELLANEOUS

Disclaimer

Honeywell International Inc. (“HII”) reserves the right to make changes in specification and other information contained in this document without prior notice, and the reader should in all cases consult HII to determine whether any such changes have been made. The information in this publication does not represent a commitment on the part of HII.

HII shall not be liable for technical or editorial errors or omissions contained herein; nor for incidental or consequential damages resulting the furnishing, performance, or use of this material.

This document contains proprietary information that is protected by copyright. All rights are reserved. No part of this document may be photocopied, reproduced, or translated into another language with-out prior written consent of HII.

Web Address: www.honeywellaidc.com

The Bluetooth trademarks are owned by Bluetooth SIG, Inc., U.S.A and licensed to Honeywell.

Thor and Mobility Edge are trademarks or registered trademarks of Honeywell International Inc. in the United States and/or other countries.

Android is a trademark or registered trademark of Google Inc. in the United States and/or other countries. Windows is a trademark or registered trademark of Microsoft Corporation.

Qualcomm and Snapdragon are trademarks or registered trademarks of Qualcomm Incorporated in the United States and/or other countries.

Other product names mentioned in the manual may be trademarks of registered trademarks of their respective companies and are the property of their respective owners.

All rights reserved.

For more information

sps.honeywell.com

Honeywell Safety and Productivity Solutions

855 S Mint St Charlotte, NC 28202

800-582-4263

www.honeywell.com