

# SYMBOL DS3478

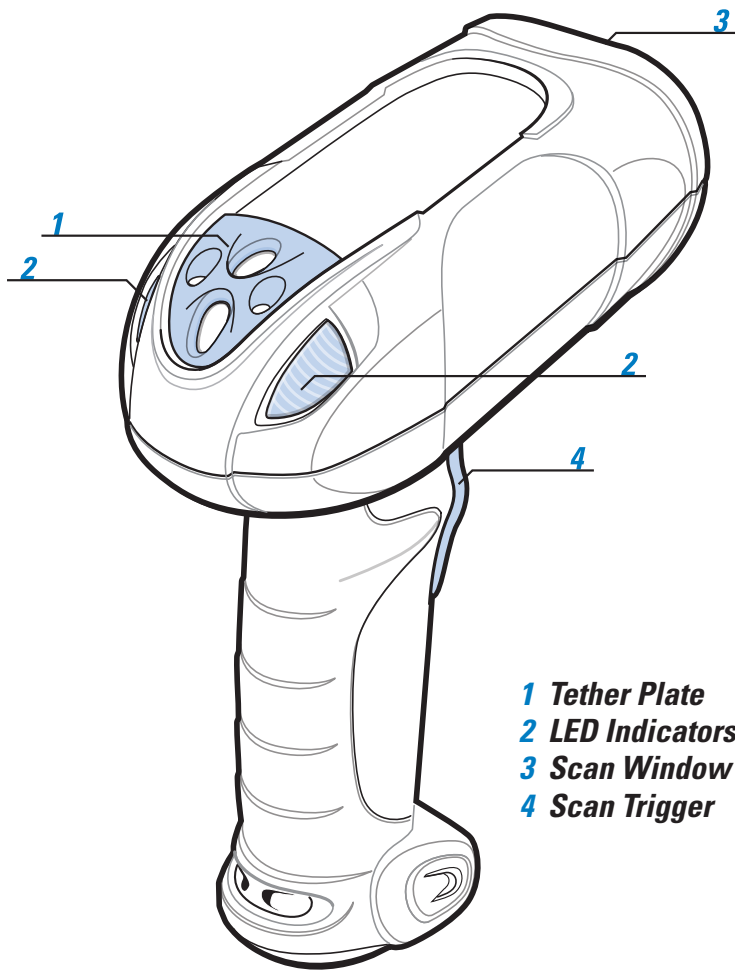
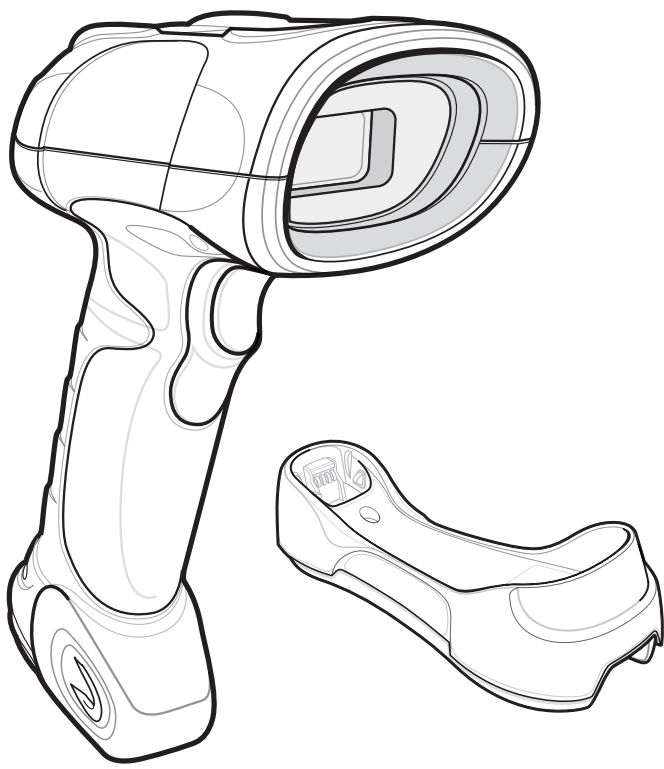
## Quick Start Guide



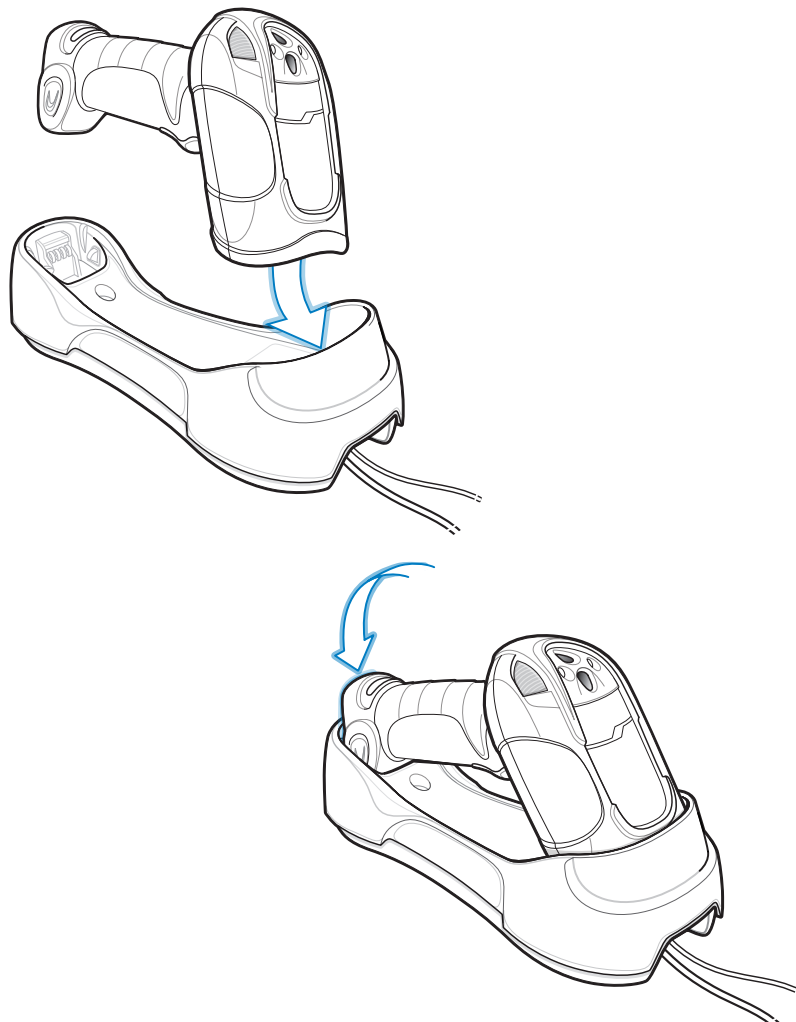
<http://www.symbol.com/ds3478sf>

See Product Reference Guide  
for more information

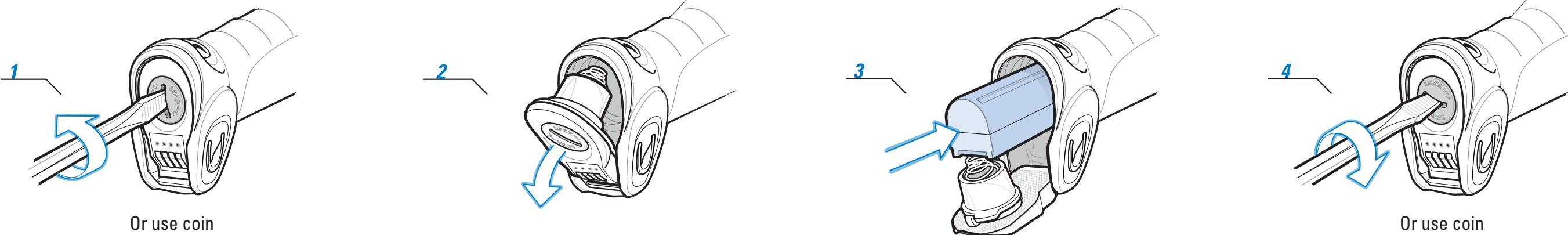
POST IN WORK AREA



### Cradle Insertion



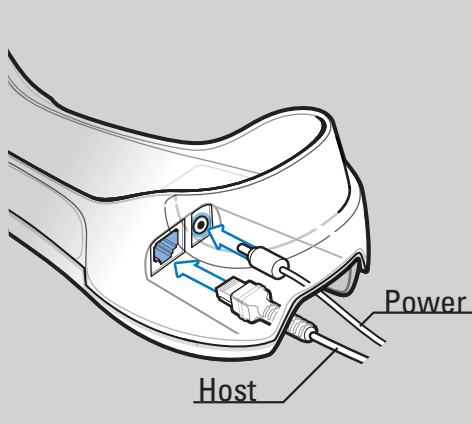
## BATTERY INSERTION/REMOVAL



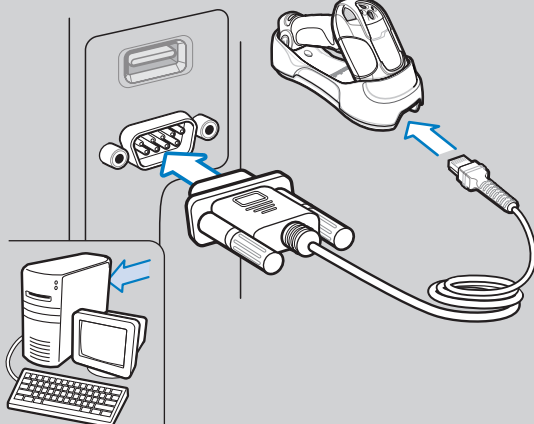
## HOST INTERFACES

NOTE: Cables may vary depending on configuration

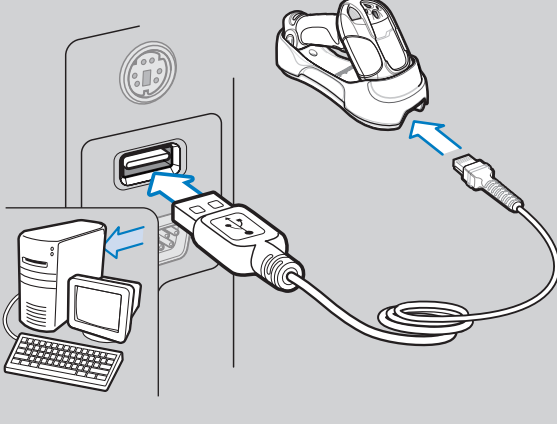
### Cable Connection at Cradle



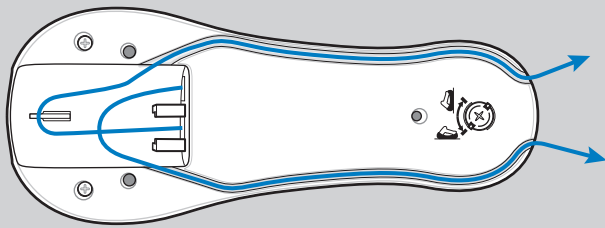
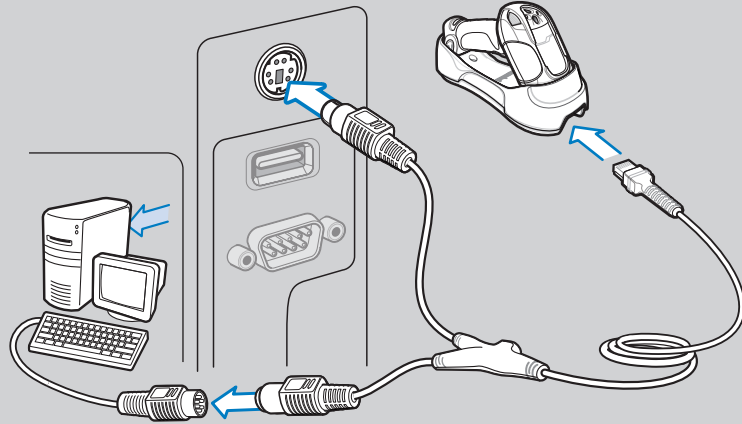
### RS-232



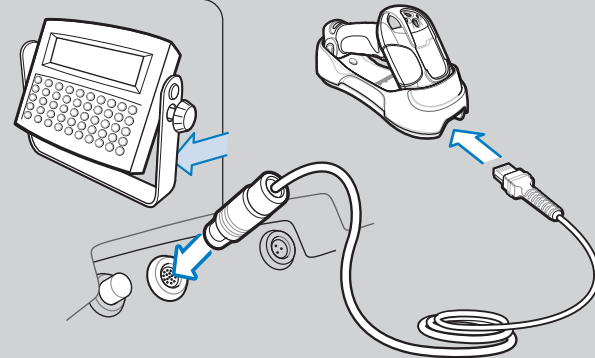
### USB



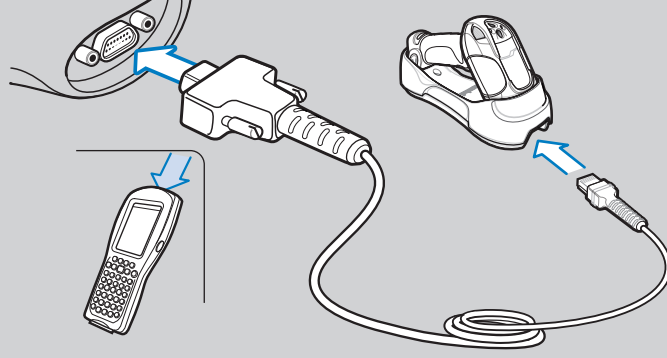
### Keyboard Wedge



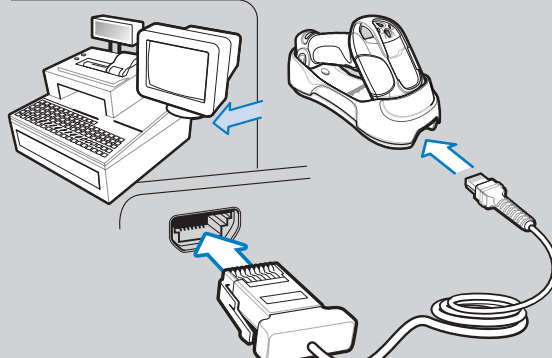
### Scanner Emulation



### Wand Emulation



### IBM 46XX



## TROUBLESHOOTING

Please refer to the DS3478 Product Reference Guide Troubleshooting section for further information.

### Scanner not working

- No power to scanner  
Check battery
- End cap not secured correctly  
Turn end cap to secure

### Scanner not decoding bar code

- Scanner not programmed for bar code type  
Ensure scanner is programmed to read type of bar code being scanned
- Bar code unreadable  
Ensure bar code is not defaced; try scanning test bar code of same bar code type
- Distance between scanner and bar code incorrect  
Move scanner closer to or further from bar code

### Scanner decoding bar code, but data not transmitted to host

- Scanner not paired to host-connected cradle  
Pair the scanner to the cradle (using the PAIR bar code on the cradle)
- Cradle not programmed for correct host interface  
Check scanner host parameters or edit options
- Interface cable is loose  
Check for loose cable connections

If data is still not transmitting to host, it may be necessary to recycle power on the cradle

### Scanner data incorrectly displayed on host

- Paired cradle host communication parameters do not match the host's parameters  
Check cradle host parameters or edit options connections

## SYMBOL DS3478 PROGRAMMING BAR CODES

### Set Defaults



SET DEFAULTS

### IBM 46XX Host Types



PORT 5B

### Scanner Emulation Host Types



SCANNER EMULATION

### Unpairing/Disconnection



UNPAIR/DISCONNECT



PORT 9B

### Wand Emulation Host Types



SYMBOL WAND

### USB Host Types



HID KEYBOARD EMULATION

### Keyboard Wedge Host Types



IBM PC/AT and IBM PC COMPATIBLE



ENABLE CONVERT TO CODE 39



IBM HAND-HELD USB



DISABLE CONVERT TO CODE 39

### RS-232 Host Types



STANDARD RS-232



NIXDORF RS-232 MODE B

### Carriage Return/Line Feed



<DATA><SUFFIX 1>



ICL RS-232



FUJITSU RS-232



NIXDORF RS-232 MODE A



OPOS/JPOS



