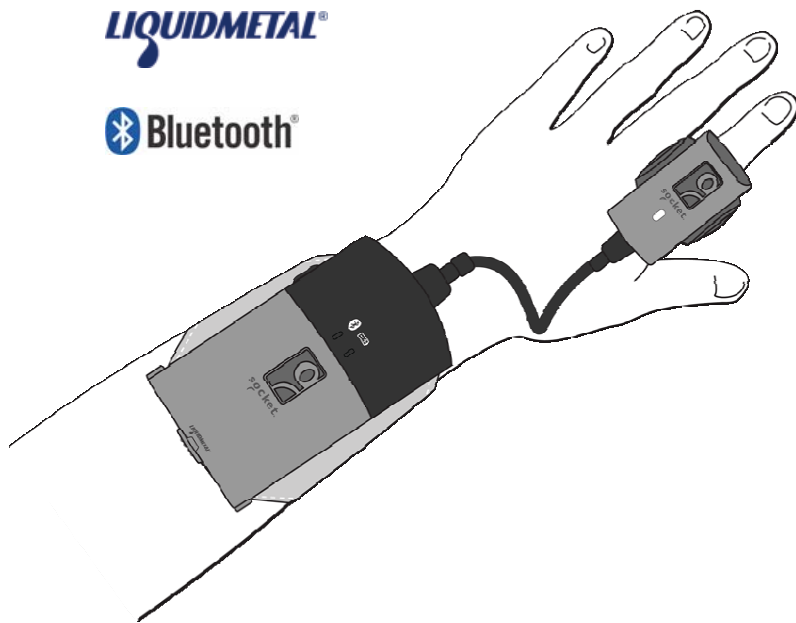


Quick Start Guide

Cordless Ring Scanner Series 9

with *Bluetooth*® Wireless Technology



Instructions for Windows Mobile

System Requirements

Your Windows Mobile-based device should satisfy these minimum requirements:

- Windows Mobile 2003, 2003SE or 5.0
- Any of the following *Bluetooth* stacks*:
 - Socket Mobile Drakar v1.4 (from Socket Mobile SD/CF Connection Kits)
 - Broadcom (Widcomm) v1.5 or greater for Windows Mobile 2003/2003SE
 - Broadcom (Widcomm) v1.7 or greater for Windows Mobile 5.0
 - Microsoft *Bluetooth* stack
- Software installation requires a host computer running ActiveSync 4.0 or greater or Windows Vista. If needed you can download ActiveSync free from: www.socketmobile.com/activesync.

**Other stacks may be compatible but have not been tested by Socket.*

Package Contents

- Ring scanner (C)
- Wrist unit (A) with attached cable (B)
- Wrist unit case (D)
- Wrist strap (E)
- Finger strap (F)
- 2 adhesive Velcro strips (G)
- Rechargeable 3.7V lithium-ion battery
- Battery charger
- CD with software and user documentation



Product Registration

We highly recommend that all customers register their Socket products. Registered users receive the following benefits:

- Priority for technical support
- Special offers for future products and upgrades
- The latest new product information

Register online at: www.socketmobile.com/support/support/new/

Additional Documentation

This *Quick Start Guide* contains only the most basic setup instructions for the Socket Mobile Cordless Ring Scanner for Windows Mobile. For more complete information, please refer to the *User's Guide*, available both in the *Docs* folder of the installation CD and online at: www.socketmobile.com/support/downloads/data-collection/series9/

Also available at the link above are quick start guides for the Intermec CK30/CK31 and Windows XP/XP Tablet Edition and the *Advanced Programming Guide*.

In the Socket software, the abbreviation “CS” refers to both the Socket Cordless Ring Scanner and Socket Cordless Hand Scanner. Please be aware that the products described in this manual may change without notice.

Technical Support

If you have trouble installing or using the CRS, contact Socket technical support by first registering your product at www.socketmobile.com/support/support/new/.

After product registration, log in, click on the **Technical Support** tab, and click **Create New Ticket** to submit an online request for technical support.

Afterwards, you can log in anytime to track the progress of your request. If we are unable to resolve your support inquiry online, we can arrange for a technical support representative to call you at a specific time.

HARDWARE PREPARATION

Charging and Installing the Battery

1. The battery must be charged before initial use, using the included Socket charger. The Charging LED will be yellow during charging. After approximately 4 hours, the battery will reach full charge, indicated by a green Charging LED.

Do not use the charger with other types of batteries. A fully charged battery should provide at least 10,000 scans and more than 8 hours of operation.



2. Slide the switch at the bottom of the wrist unit to unlock the battery door. Insert the battery so that the battery contacts align with the contacts inside the wrist unit, then close and lock the battery door.



WARNING: Do not insert the battery backwards or upside-down. Damage may result.

You can check the battery level by viewing the CS HW screen of the SocketScan settings utility. The utility will report the battery level only when the CRS is connected to your mobile computer.

About the Cable Break Away

The CRS is designed to break away from the hand if subjected to unusual force. This break away feature is designed to reduce the possibility or extent of injury to the body in the event the CRS becomes entangled in industrial equipment.

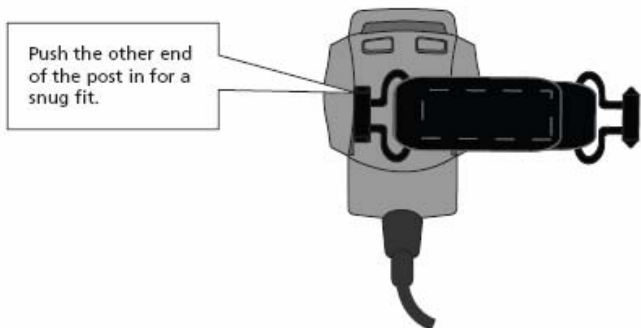
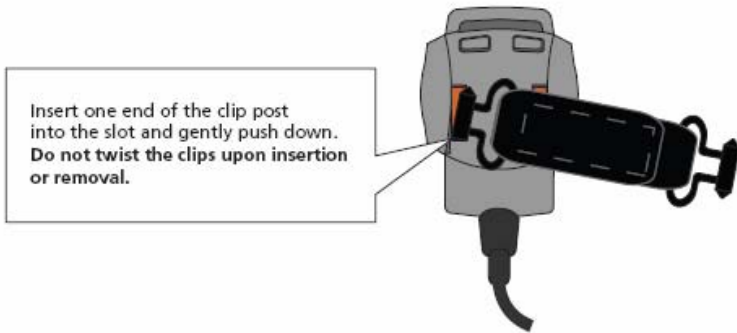
If the cable breaks away from the ring scanner during use, simply plug it back in to resume operation.

Note: Whenever the cable disconnects from the ring scanner, it will beep 3 times.

Assembling and Putting on the CRS

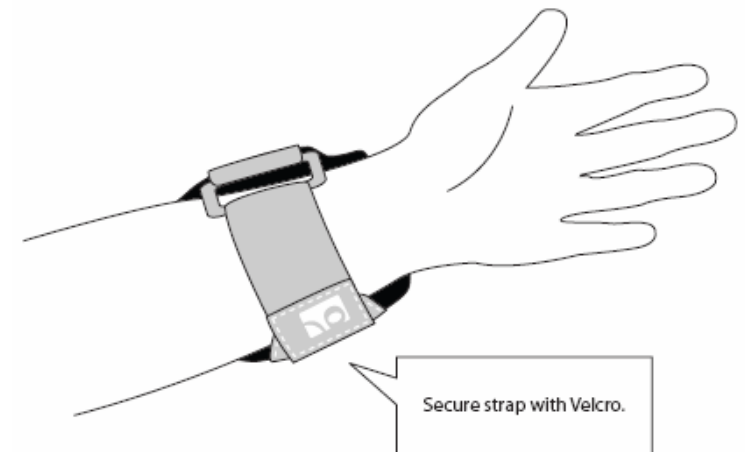
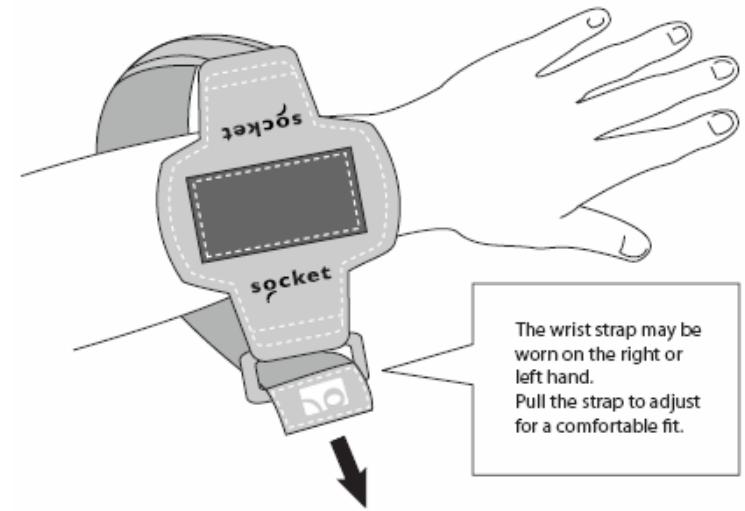
You can put on the CRS either with or without the case. If you choose not to use the case, the plastic parts of the wrist unit will be more susceptible to abuse.

Attaching the Finger Strap to the Ring Scanner

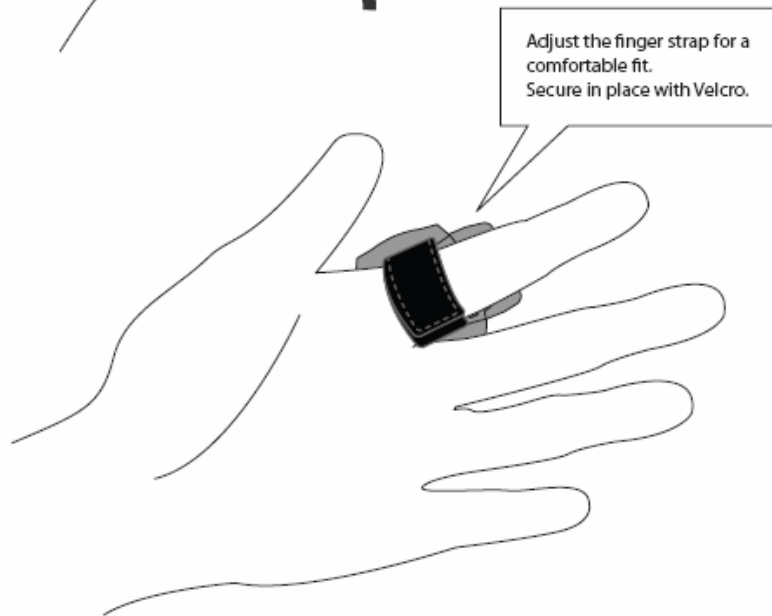
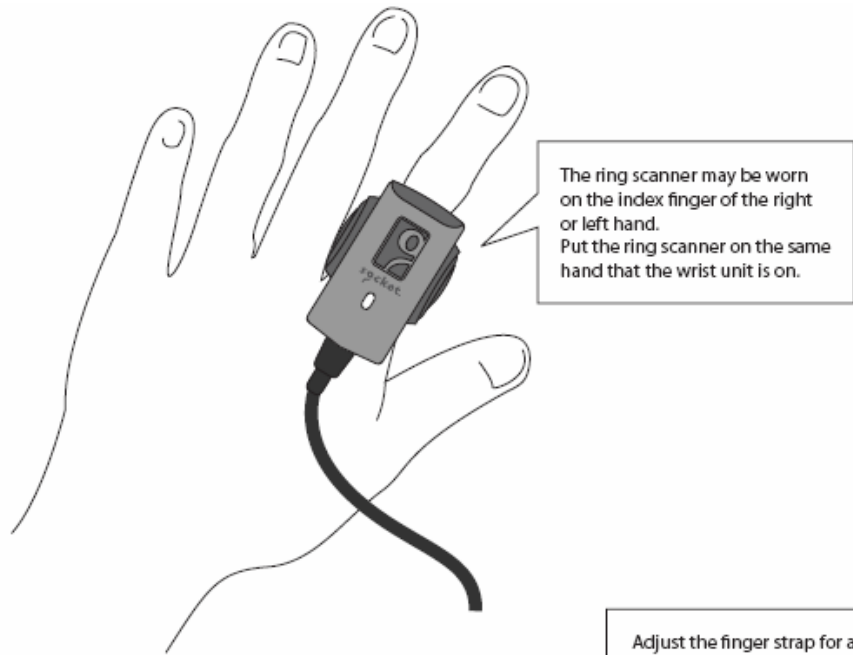


Note: To remove the finger strap, grasp the clips with your thumb and index finger. Pull one side of the clip out and remove.

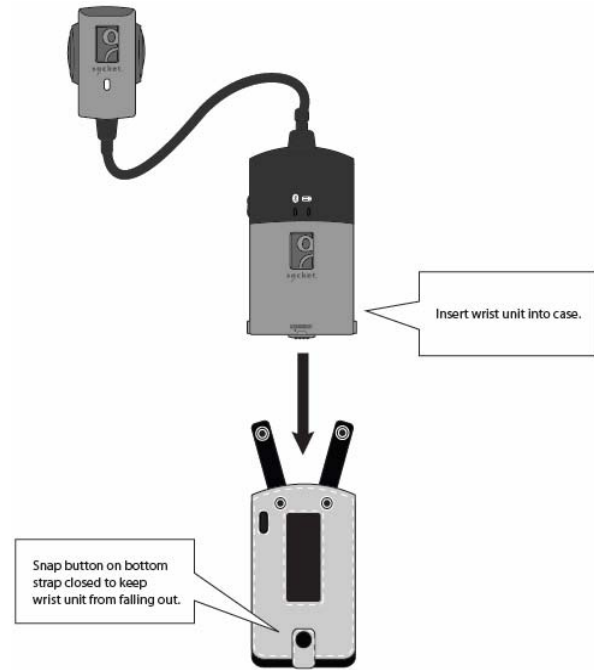
Putting on the Wrist Strap



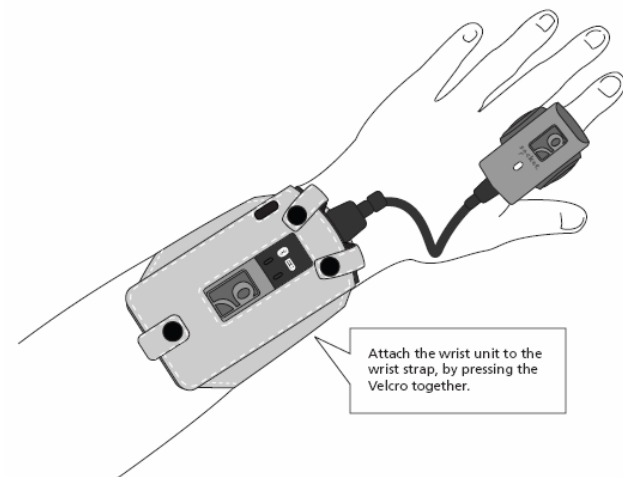
Putting on the Wrist Strap



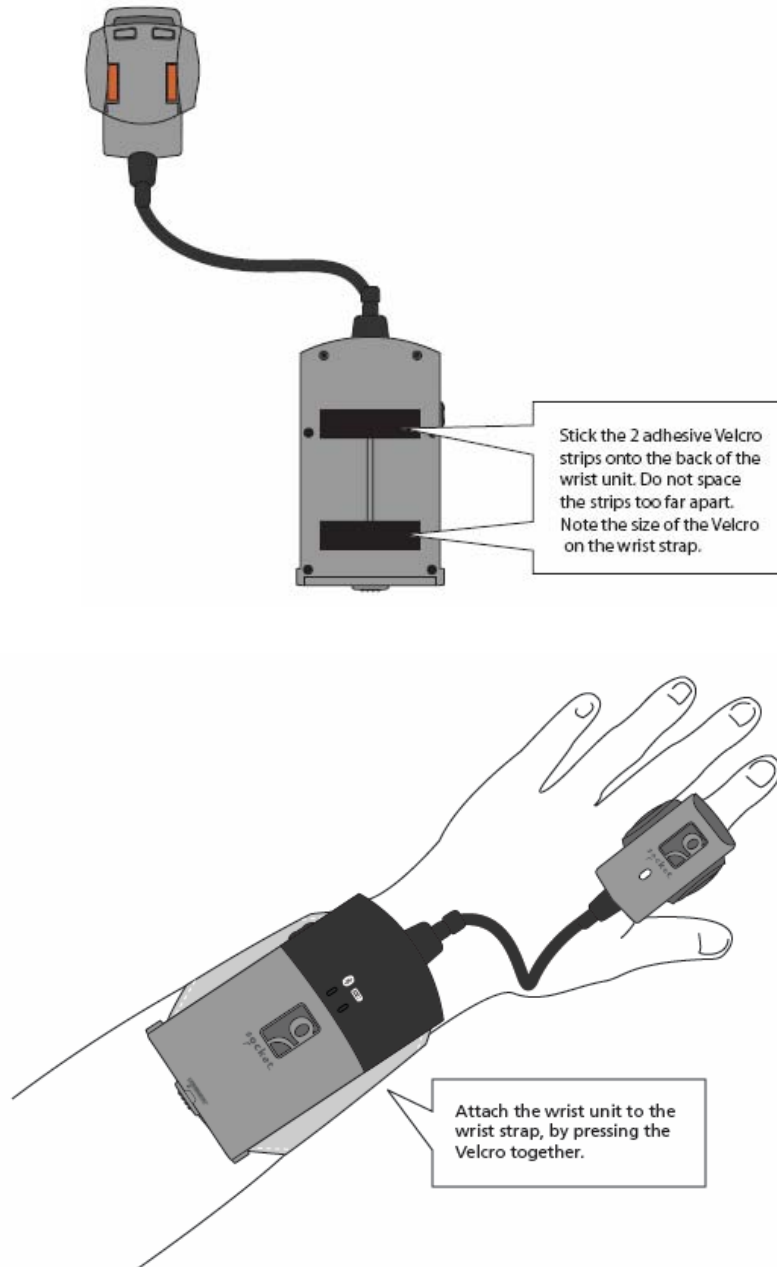
Using the CRS with the Wrist Case



Note: During insertion, you may hear a beep and see the LED flicker because the power button was pressed, however, the wrist unit will not turn on unless the button was pressed for more than 2 seconds, and the LED continues to blink.



Note: Using the CRS without the wrist case makes it more susceptible to damage.



SETUP INSTRUCTIONS

STEP 1: Install the Software

Note: If you are using the SoMo™, software installation is not required. SocketScan and Connect!Agent software come pre-loaded on your device. However, you may want to update the software if a more recent version is available.

IMPORTANT! If you are not using the SoMo, you must install both SocketScan and Connect!Agent.

1. Delete any bar code scanning software already installed in your device, including software from other companies.

- Make sure the software is closed.
- Tap Start | Settings | System tab | Remove Programs.
- Use the utility to delete the software.

2. Use a serial/USB cable or cradle to make an active connection between your mobile computing device and a host PC.

- If your host PC runs Windows XP, use ActiveSync 4.0 or greater.
- If your host PC runs Windows Vista, use the Windows Mobile Device Center built into Windows Vista.

3. Insert the SocketScan installation CD into the CD drive of your host PC.

4. Use My Computer or Windows Explorer to access your CD drive. In the CD contents, open the SocketScanCE folder and click on the Setup.exe file.



5. The installation wizard will launch. Follow the wizard to install the software.


6. After software installation, your device will direct you to soft reset. Tap ok. Remove the device from the cable/cradle and press the reset button.

7. Install Connect!Agent. Re-establish the ActiveSync connection. Open the Connect!Agent folder in the CD and launch the Connect!AgentSetup.exe file. Follow the wizard to install the software.

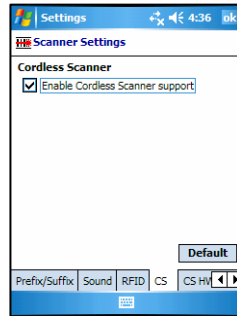


STEP 2: Configure Scanner Settings

1. Tap Start | Settings | System tab | Socket Scanner Settings.

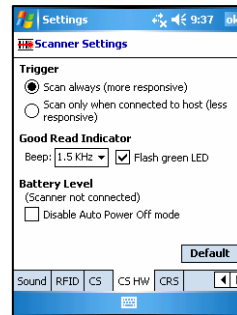
Alternatively, tap Start | Programs | SocketScan. Go to the Today screen. Tap the SocketScan icon  at the bottom of the screen. In the pop-up menu, tap Settings.

2. Tap on the CS tab at the bottom of the screen. Check Enable Cordless Scanner support. **IMPORTANT!!**

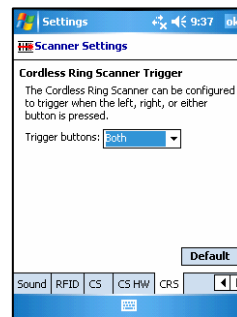


3. Tap on the CS HW tab. Enter the following settings:

- **Trigger:** Select whether you would like the CRS to scan only when a *Bluetooth* connection to the device is detected. If you require the CRS to detect a *Bluetooth* connection before each scan, scanning will be a few milliseconds slower.
- **Good Read Indicator:** Select how you would like the CRS to indicate that it has successfully read data.
- **Battery Level:** No progress bar should appear since you are not connected to the CRS.
- **Disable Auto Power Off mode:** The CRS automatically shuts off if there is no *Bluetooth* connection for 20 minutes. Check to disable.



4. Tap on the CRS tab. Select which button on the CRS you would like to use to trigger the scanner.



5. After entering settings, tap **ok** to save the changes.


STEP 3: Connect CRS to Host Device with *Bluetooth*

SocketScan supports a generic *Bluetooth* COM port and may be able to connect to *Bluetooth* stacks on host mobile computers other than those listed.

1. Turn on the CRS. Press the small power button on the side of the wrist unit for at least 2 seconds, until you hear a beep. The *Bluetooth* status LED on the wrist unit should be blinking blue.

2. Tap Start | Programs | SocketScan.

Disregard the icons for Socket Trigger RFID, Socket Trigger Scan, and Socket Trigger Select.

3. Tap on the SocketScan icon  at the bottom of the screen. In the pop-up menu, tap Connect CS.

Your mobile device cannot connect to the CRS if another device is set as the default Bluetooth serial device.

If Connect CS does not appear, tap Settings in the menu, tap on the CS tab, and enable cordless scanner support.

4. Connect!Agent will automatically turn on the *Bluetooth* radio and begin to search for and connect to the CRS.

- If this is your first time connecting to a cordless scanner from this device, Connect!Agent will begin searching for any Socket cordless scanner in range.
- If you have previously connected to a cordless scanner, Connect!Agent will automatically begin searching for your favorite (default) scanner.

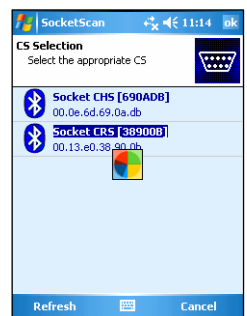
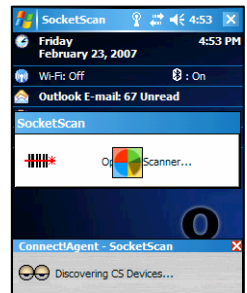
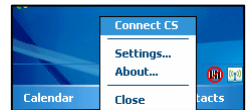
5. If Connect!Agent does not have a favorite scanner and finds multiple cordless scanners in range, select the one you want and tap **ok**.

The six characters following the device name are the last six characters of the Bluetooth MAC address.

6. After your mobile device connects to the CRS, the CRS will beep once, and the SocketScan icon at the bottom of the Today screen will change into a ring icon to indicate the connection.

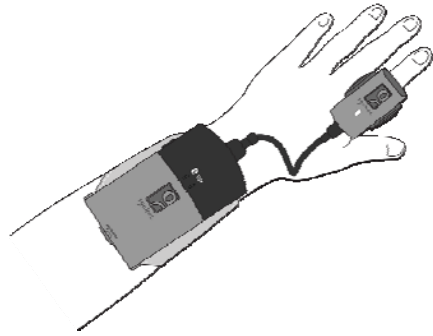
Connect!Agent will save information about the CRS to automate future connections to your specific unit.

To change which scanner is assigned as your favorite, use the Connect!Agent utility. Refer to the User's Guide.



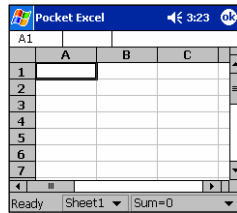
STEP 4: Assemble and Put on the CRS

Please refer to the instructions earlier in this guide.



STEP 5: Scan Data into Your Application

1. Start the Windows application that you want to enter scanned data into (e.g., Excel, Notepad, etc.). Make sure a document or spreadsheet is open.
2. Place the cursor where you want data from the next scan to be entered.
3. Press the trigger button and aim your finger at the bar code. The red laser beam should cover the entire width of the bar code. Please refer to the *User's Guide* for scanning tips.



When data is read and sent to the mobile computing device, the laser will turn off. Depending on your scanner settings, the scanner may beep and/or the ring scanner's LED may flash green to indicate a good read.

If no data is read in a few seconds, the laser will turn off, and you must try again.

4. After a successful scan, data should appear in your document. By default, the cursor automatically advances to the next cell or line, ready for the next scan.

Wait for the "Good Scan" indication before you scan another bar code. If you try to scan too fast, the device can lock up until you stop scanning.

SocketScan Auto-Reconnect

If the Pocket PC suspends or the CRS moves out of range, the connection will end. After the Pocket PC turns on again or returns in range, SocketScan will try to re-connect for approximately 3 minutes. If they have not re-connected after 3 minutes, manually re-connect.

Disconnecting

*Tap on the SocketScan icon at the bottom of the Today screen and tap **Disconnect**. The devices will disconnect, and the Pocket PC Bluetooth radio will turn off.*

Turning off the CRS

Press the power button on the wrist unit for at least 2 seconds, until you hear 2 beeps.

HARDWARE AND SOFTWARE INDICATORS

© 2007 Socket Communications, Inc. dba Socket Mobile, Inc. All rights reserved. Socket, the Socket logo, Cordless Ring Scanner, SocketScan, SoMo, Connect!Agent are trademarks or registered trademarks of Socket Communications, Inc. dba Socket Mobile, Inc. The *Bluetooth* word mark and logo are owned by the Bluetooth SIG, Inc. USA, and any use by Socket Mobile, Inc. is under license. Any other product names are trademarks of their respective owners.

Battery Charger LEDs

LED	LED Activity	Meaning
Power	Red	Plugged into valid power source
Charging	Yellow	Charging
	Green	Battery is fully charged

Scanner LED

LED	LED Activity	Meaning
Good Read	Green	Data successfully scanned and sent to host device



Wrist Unit LEDs

LED	LED Activity	Meaning
Bluetooth Status	Blinking blue every second	Bluetooth radio is on, no connection
	Blinking blue, every 5 seconds	Bluetooth connection
Battery Status	Blinking Red	20% battery capacity remaining
	Solid Red	10% battery capacity remaining
	Off	Off or Good Battery status

Wrist Unit Beeps

Beep Pattern	Meaning
1 beep	Bluetooth connection to host device has begun or power on
2 beeps	Bluetooth connection to host device has ended or power off
1 beep (optional setting)	Data successfully scanned and sent to host device
3 beeps	Cable disconnected from wrist unit

SocketScan Icon *Located at the bottom of the Today screen.*

Icon	Meaning
	The CRS is not connected to the host device
	The CRS is connected to the host device