

AP-CODE

DATE CODER

User's Manual

© 2022 All rights reserved.

For the most recent version of this manual please visit
<http://www.primera.com/ap-codesupport>

Notices: The information in this document is subject to change without notice. NO WARRANTY OF ANY KIND IS MADE WITH REGARD TO THIS MATERIAL, INCLUDING, BUT NOT LIMITED TO, THE IMPLIED WARRANTIES OF MERCHANTABILITY AND FITNESS FOR A PARTICULAR PURPOSE. No liability is assumed for errors contained herein or for incidental or consequential damages in connection with the furnishing, performance, or use of this material.

This document contains proprietary information that is protected by copyright. All rights are reserved. No part of this document may be photocopied, reproduced, or translated into another language without prior written consent.

Trademark Acknowledgments: Primera and Primera Eddie are registered trademarks of Primera Technology, Inc. Windows is a registered trademark of Microsoft Corporation. All other trademarks are the property of their respective owners.

Revision History

Edition 1.0, Copyright 2022, All rights reserved.

FCC Compliance Statement: This device complies with part 15 of the FCC rules. Operation is subject to the following two conditions: (1) this device may not cause harmful interference, and (2) this device must accept any interference received, including interference that may cause undesired operation.

For Users in the United States: This product is intended to be supplied by a UL listed Direct Plug-In Power Supply marked "Class 2" or a UL listed ITE Power Supply marked "LPS" with output rated 12VDC, 3A or higher. This equipment has been tested and found to comply with the limits for a Class A digital device, pursuant to Part 15 of the FCC Rules. In a domestic environment, this product may cause radio interference, in which case the user may be required to take adequate measures. This equipment generates, uses, and can radiate radio frequency energy and, if not installed and used in accordance with the instructions, may cause harmful interference to radio communications. However, there is no guarantee that interference will not occur in a particular installation. If this equipment does cause harmful interference to radio or television reception, which can be determined by turning the equipment off and on, the user is encouraged to try to correct the interference by one or more of the following measures:

- Re-orient or relocate the receiving antenna.
- Increase the separation between the equipment and receiver.
- Connect the equipment into an outlet on a circuit different from that to which the receiver is connected.
- Consult the dealer or an experienced radio/TV technician for help.

Use of shielded cables is required to comply with the Class A limits of Part 15 of the FCC Rules. You are cautioned that any changes or modifications not expressly approved in this manual could void your authority to operate and/or obtain warranty service for this equipment.

For Users in Canada: This digital apparatus does not exceed the Class A limits for radio noise for digital apparatus set out on the Radio Interference Regulations of the Canadian Department of Communications. Le present appareil numerique n'emet pas de bruits radioelectriques depassant les limites applicables aux appareils numeriques de la class A prescrites dans le Reglement sur le brouillage radioelectrique edicte par le ministere des Communications du Canada.

Contents

- Section 1: Getting Started 4
 - 1A Choosing a Good Location 4
 - 1B Unpacking and Inspection..... 5
 - 1C Assemble your Date Coder 6
 - 1D Install the ink Cartridge 17
- Section 2 How to use AP-CODE..... 19
 - 2A Tutorial: Create a Tag 19
 - 2B Touch Screen Overview 25
 - 2C System Settings..... 26
 - 2D Save and Load Tags..... 27
 - 2E Adjusting Print Position..... 29
 - 2F Create Automated Expiration Dates 32
- Section 3: Maintenance and Troubleshooting..... 34
 - 3A Cartridge Cleaning – Nothing is Printing..... 34
 - 3B Cartridge Storage 35
 - 3C Tag Removal..... 35
 - 3D Acceptable Print Surfaces..... 35
- Section 4: Technical Support..... 36
- Section 5: Technical Specifications 37
- Section 6: Certifications and Environmental Policy 38

Section 1: Getting Started

Thank you for purchasing the Primer AP-CODE Date Coder. The AP-CODE allows you to add printed information to your labeled containers immediately after applying the label. The AP-CODE can be installed on any Primera AP-360 or AP-362 Applicator regardless of manufacture date.

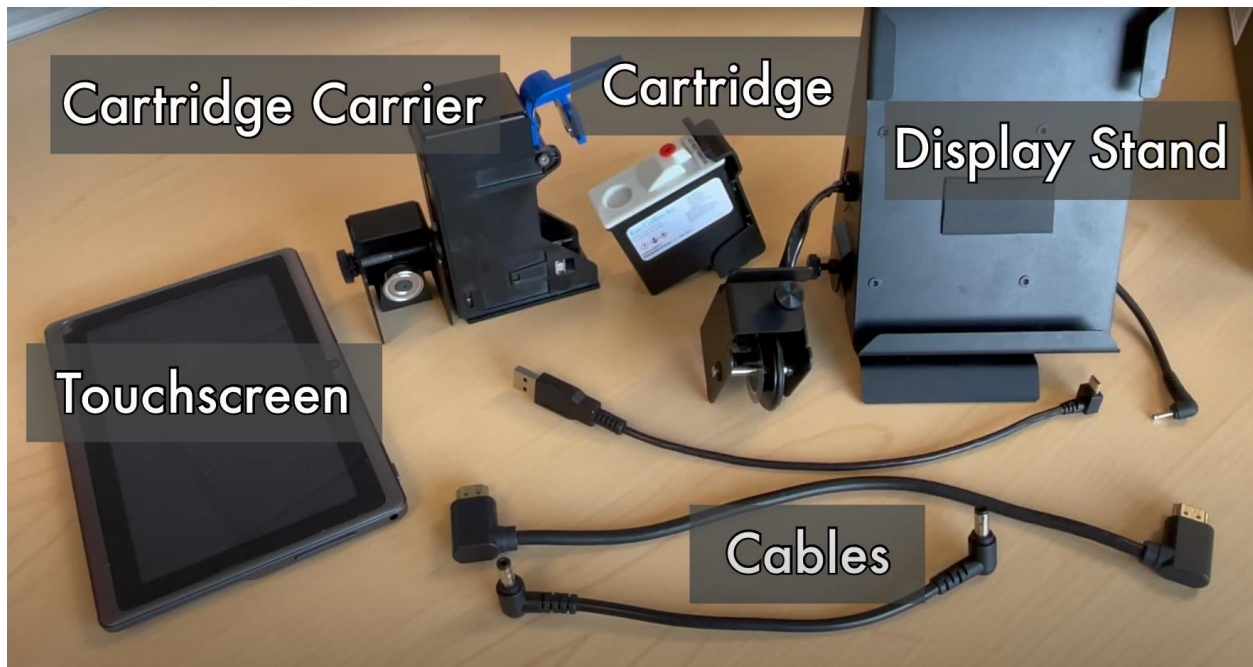
1A Choosing a Good Location

- Place the AP-CODE in a location with adequate air circulation to prevent internal heat buildup.
- Do not place the AP-CODE near heat sources such as radiators or air ducts or in a place subject to direct sunlight, excessive dust, mechanical vibration, or shock.
- Allow for adequate clearance above the AP-CODE to accommodate the print head as you move the container arm up to its maximum height.
- Allow for 2" of additional clear on the right side of the AP360/362 to allow for the touchscreen display and cable attachment.

1B Unpacking and Inspection

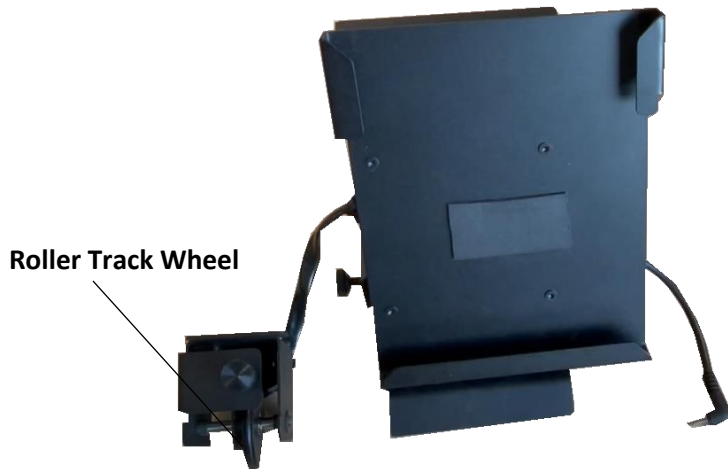
While unpacking your AP-CODE, inspect the carton to ensure no damage has occurred during shipping. Make sure that all supplied accessories are included with your unit. The following items are included in the box:

1. Cartridge Carrier (Print Head)
2. 1x Solvent Ink Cartridge (53580)
3. Display Stand with attached drive roller sensor
4. Touch Screen
5. Micro USB Cable
6. HDMI Cable
7. Power jumper cable (5mm barrel)

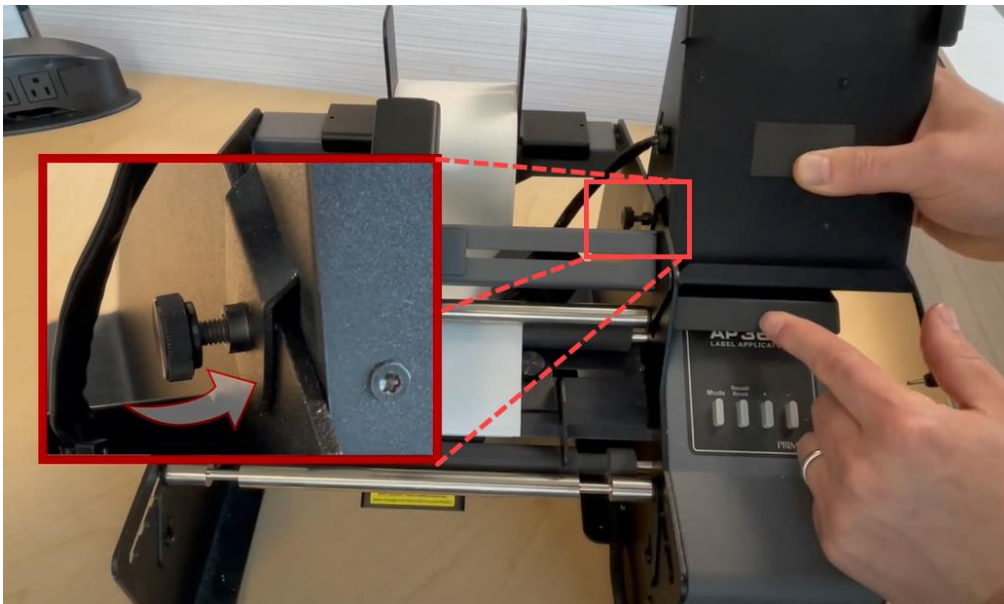


1C Assemble your Date Coder

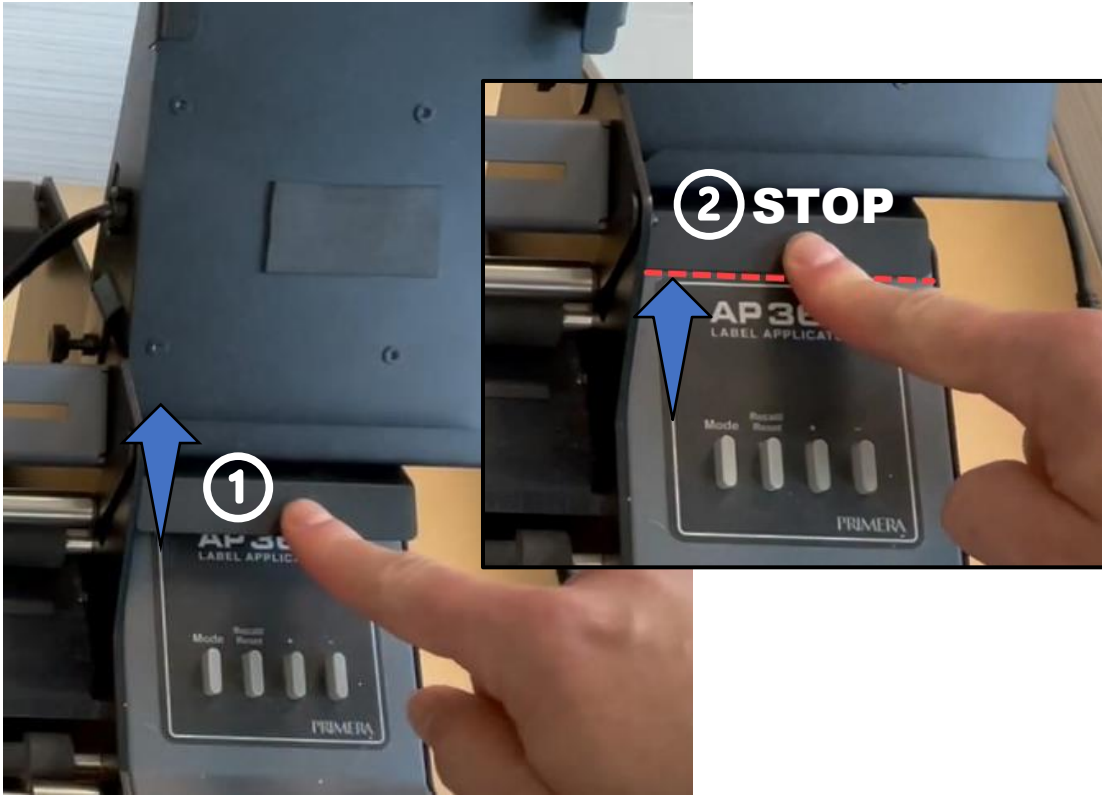
1. Locate the Display Stand.



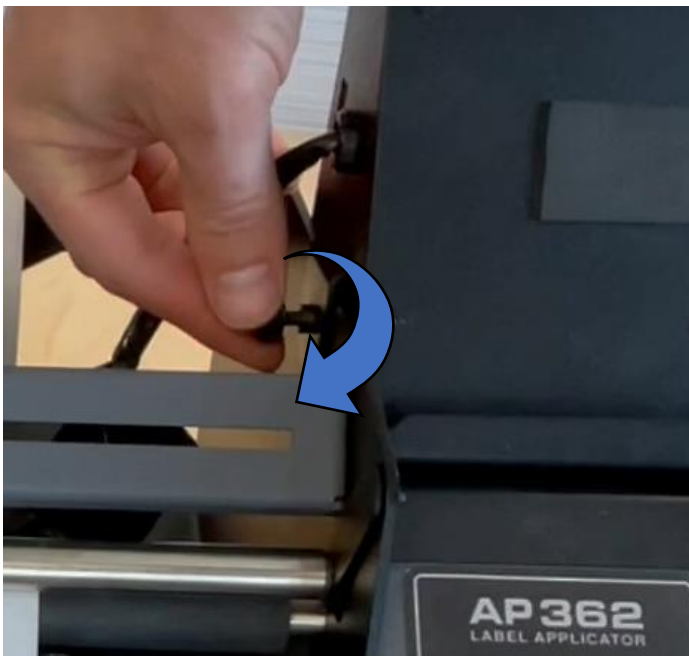
2. Place the display stand on the right side of the Applicator just above the AP360/AP362 Logo Label. The magnets on the underside will attach it to the top of the cover. Make sure the thumbscrew tab on the left side of the display stand fits over the applicator frame.



3. Push the stand so the bottom aligns with the top of the logo label.



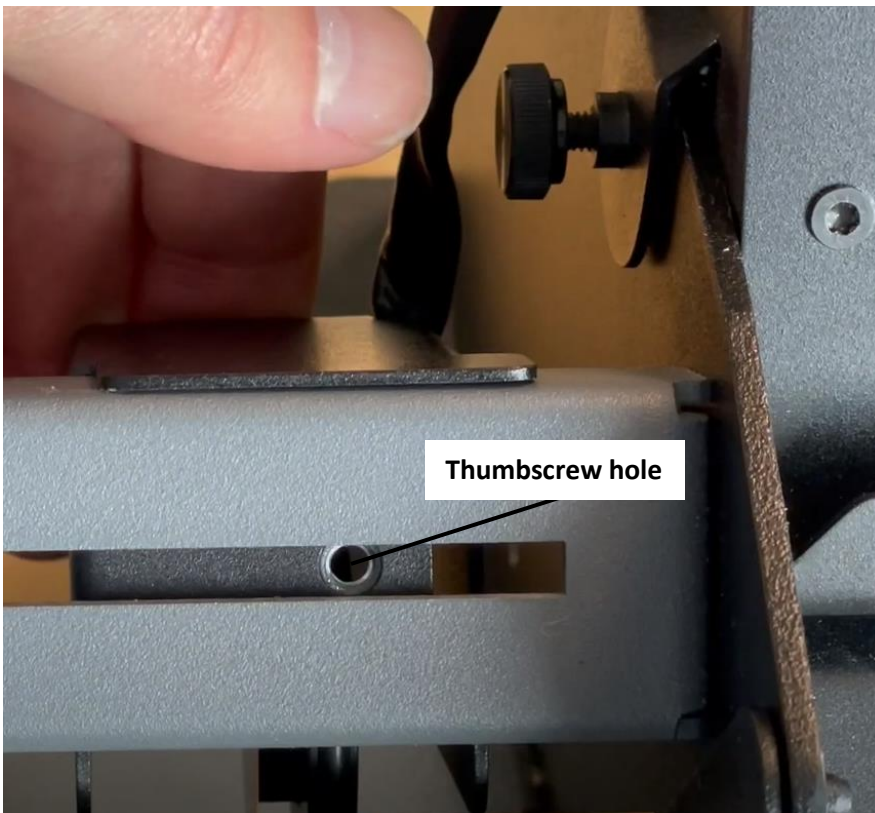
4. Tighten the Thumb Screw



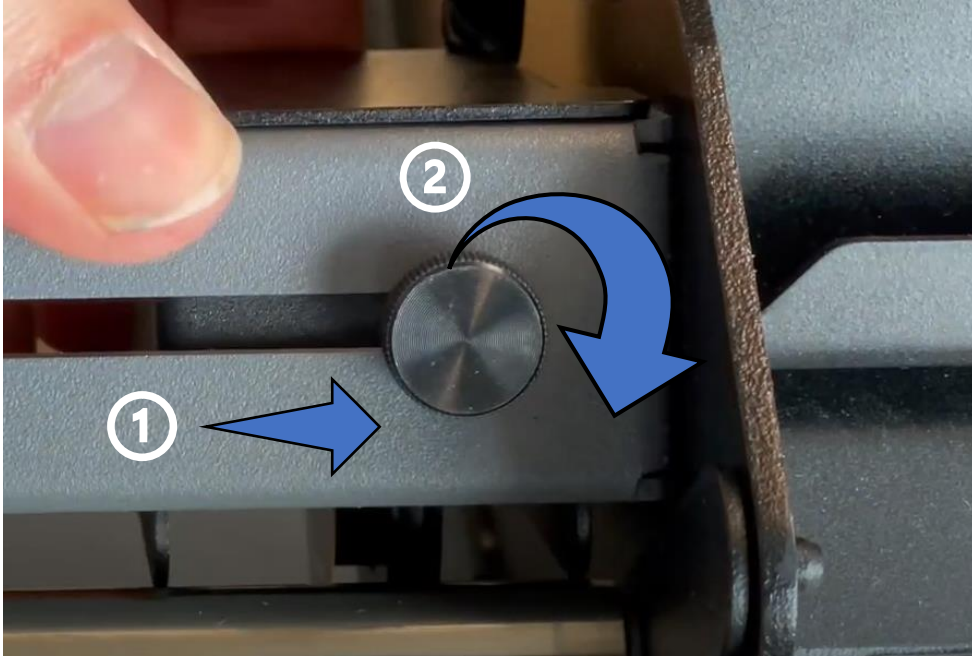
5. Locate the Roller Track Wheel attached to the display stand and remove the thumbscrew.



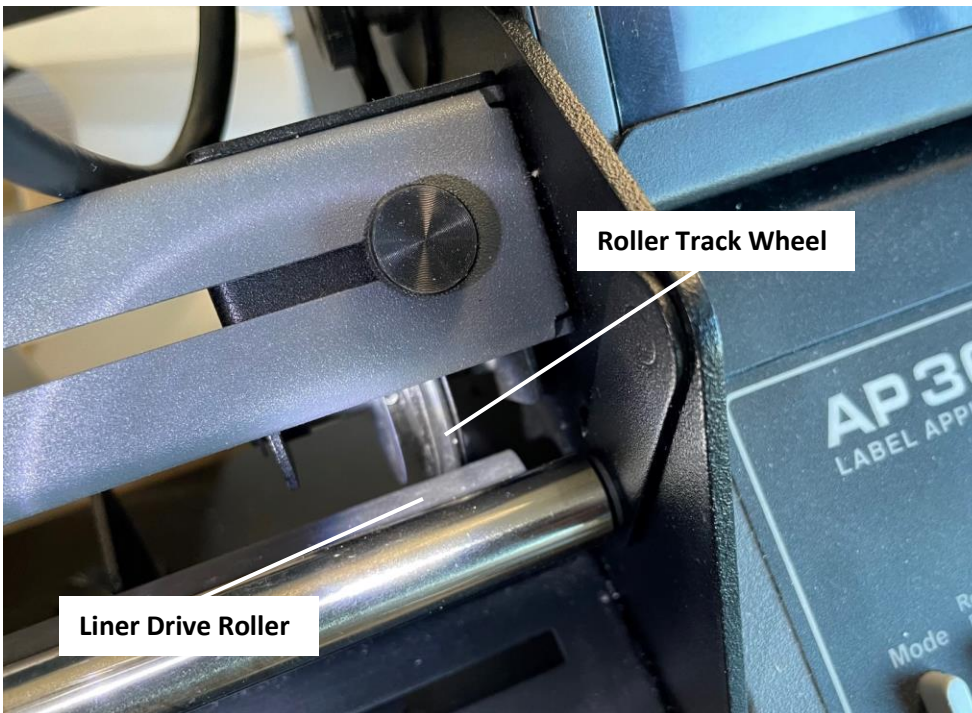
6. Position the track wheel to the pressure arm bar, so the thumbscrew hole is visible.



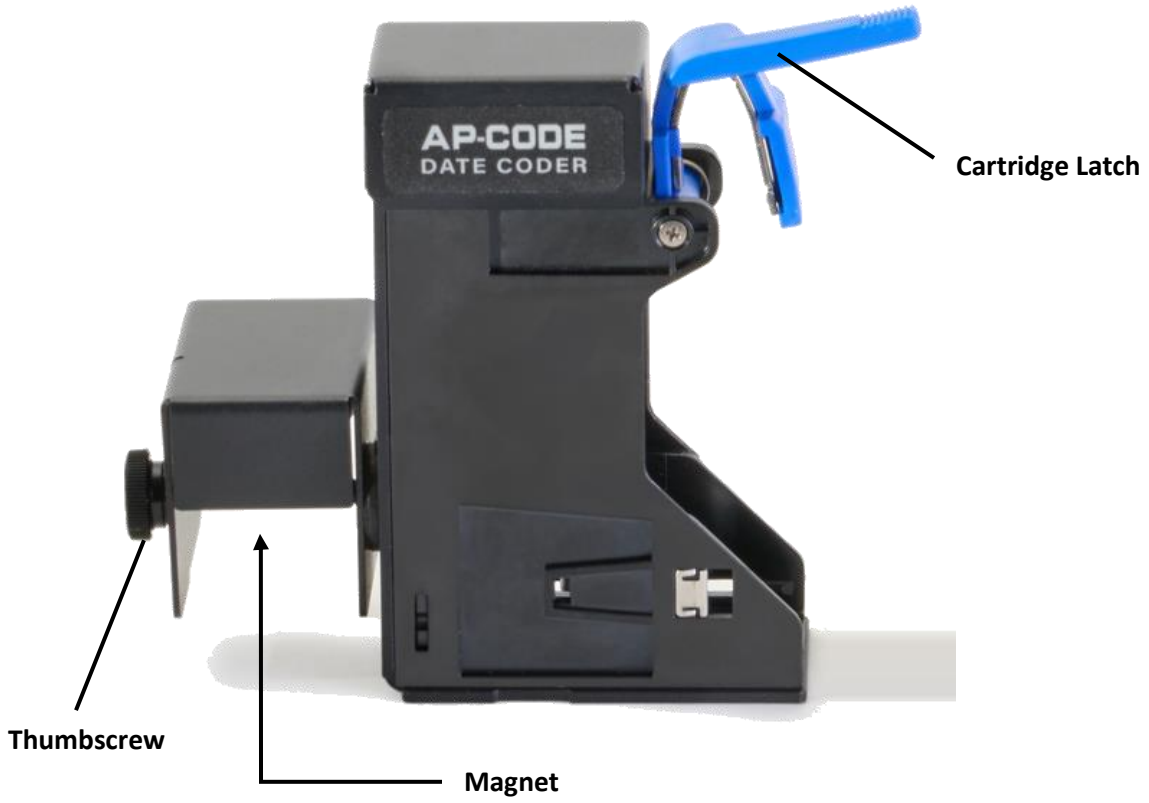
7. Push the track wheel to the right, insert the thumbscrew and tighten it.



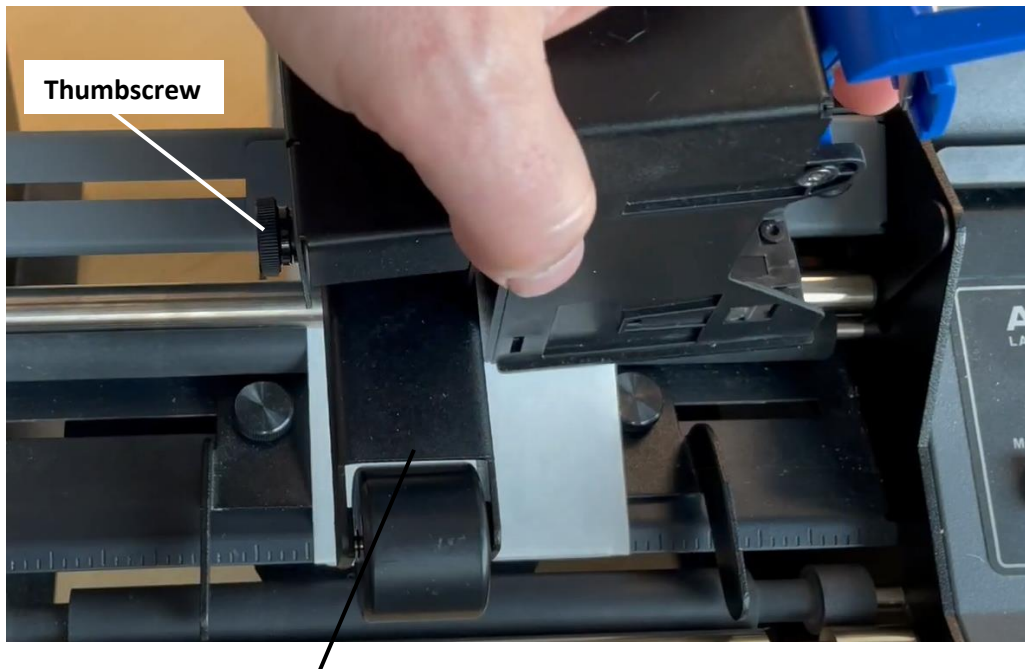
8. The roller track wheel should be touching the Liner Drive Roller.



9. Locate the Cartridge Carrier.

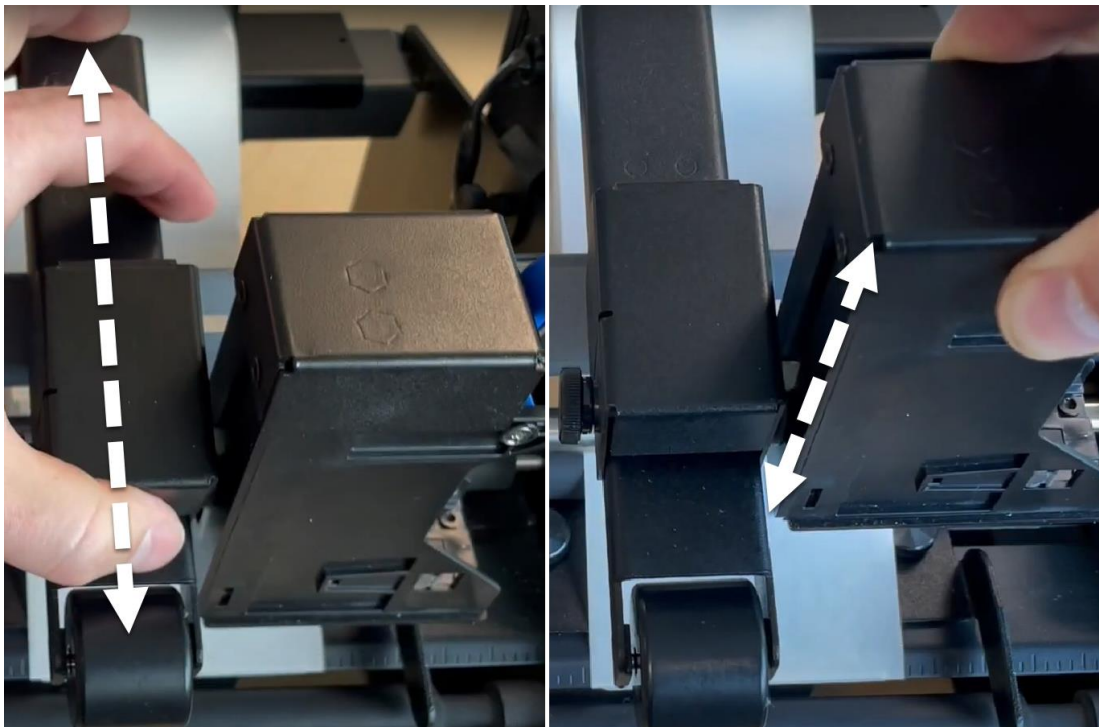


10. Place the Cartridge Carrier on the Roll Pressure Arm. Turn the magnet so it faces the arm. The magnet is all you need to attach the cartridge carrier.

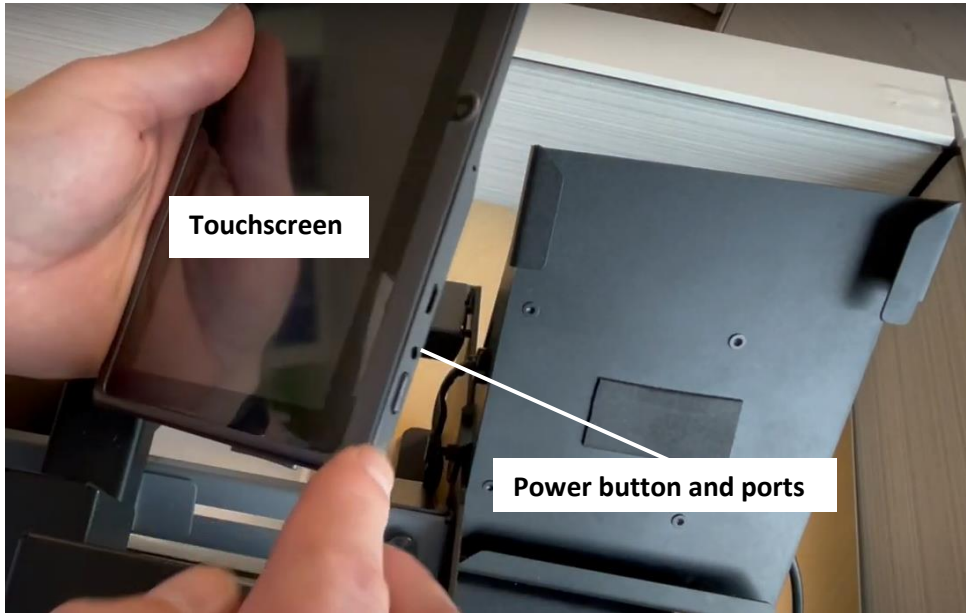


Roll Pressure Arm

11. The thumbscrew allows you to adjust the height and position of the print head along the Roll Pressure Arm. Once you have it where you want, tighten the thumbscrew.



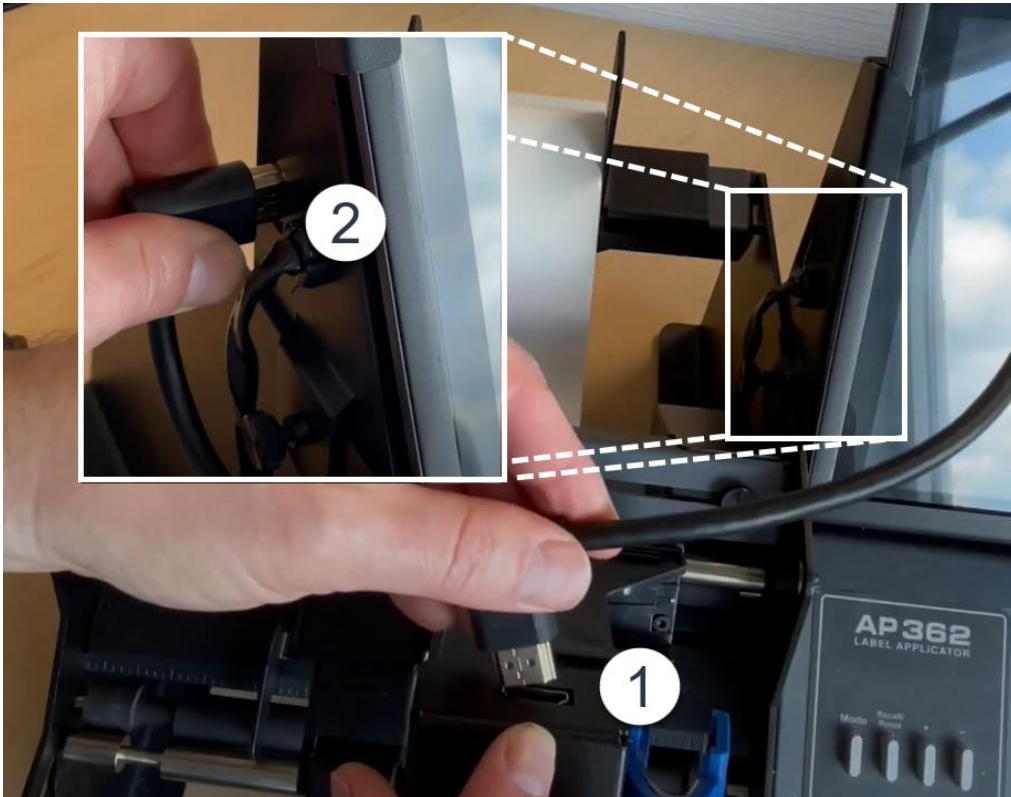
12. Install the touchscreen display tablet. Orient the screen, so the power button and ports are on the right side.



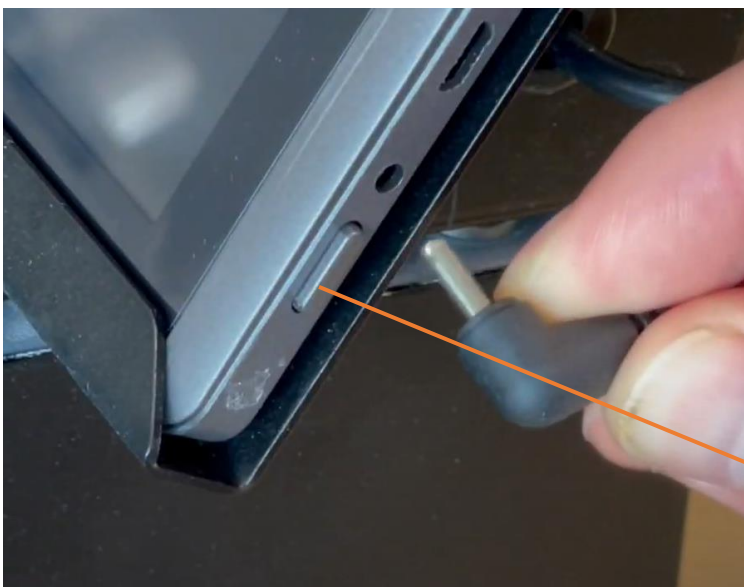
13. Slide the Touchscreen into place on the display stand.



14. Connect the HDMI cable to the cartridge carrier (1) and the left side of the display stand (2).

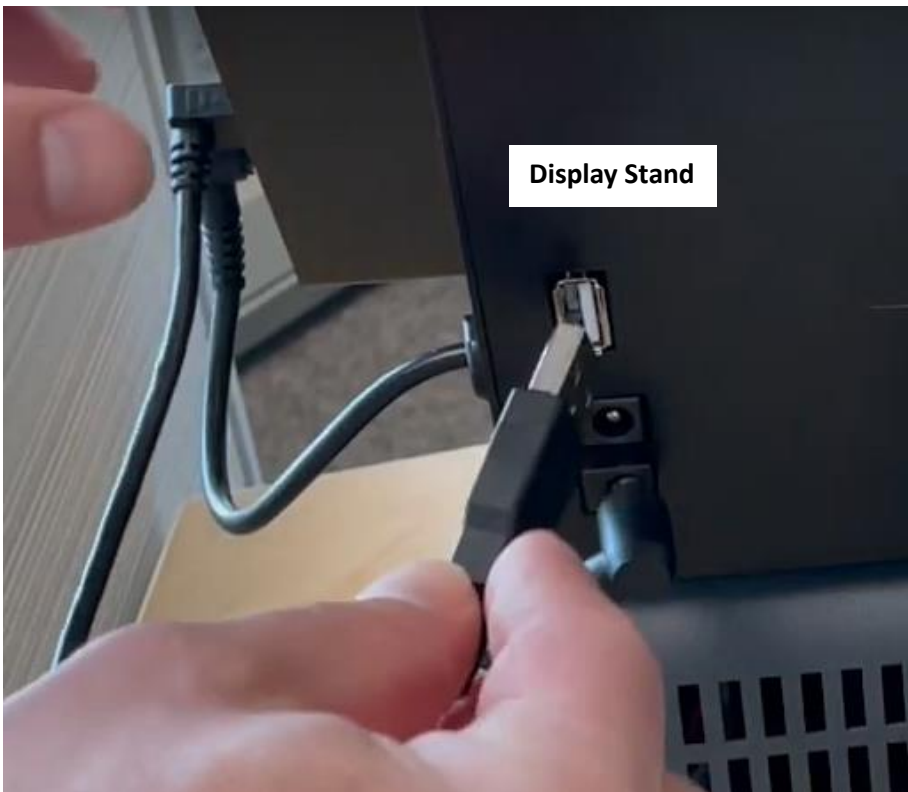


15. Connect the power from the display stand to the Touchscreen

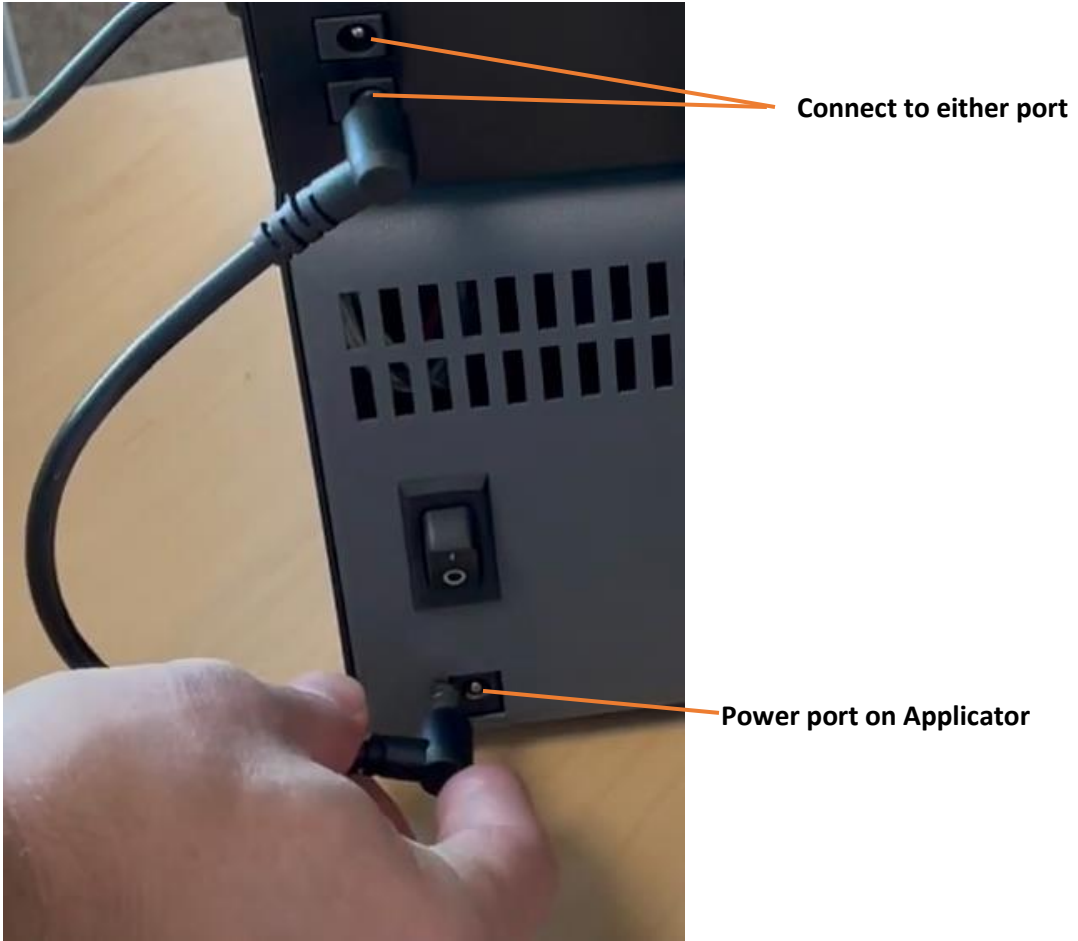


**Power Button (Hold to
Power off display)**

16. Connect the micro USB cable to the Touchscreen and the back of the display stand.



17. Connect the Power jumper cable to either of the ports on the back of the display stand. Connect the other side to the Applicator.



18. Use the power supply that came with your Applicator. Plug it into the remaining open port on the back of the Display Stand.



19. Connect the power supply to a power outlet and toggle the power switch.



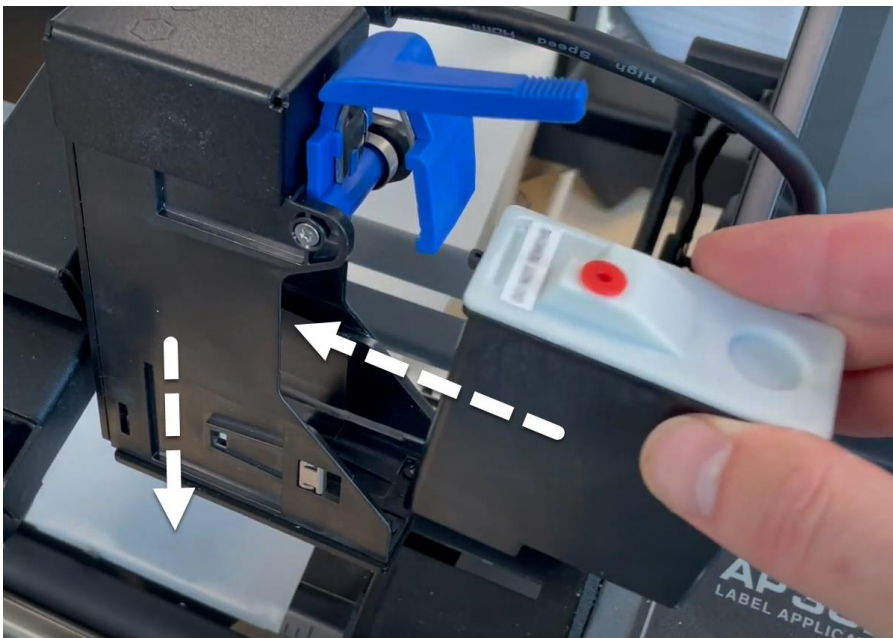
1D Install the ink Cartridge

The AP-CODE comes with one solvent-based ink cartridge, which will last for thousands of prints. If you need to replace the cartridge or clean the cartridge nozzles, use this procedure to remove and replace the cartridge.

1. Remove the cartridge from its packaging.
2. Separate the cartridge from the cartridge cap. Save the black cap for cartridge storage between uses.

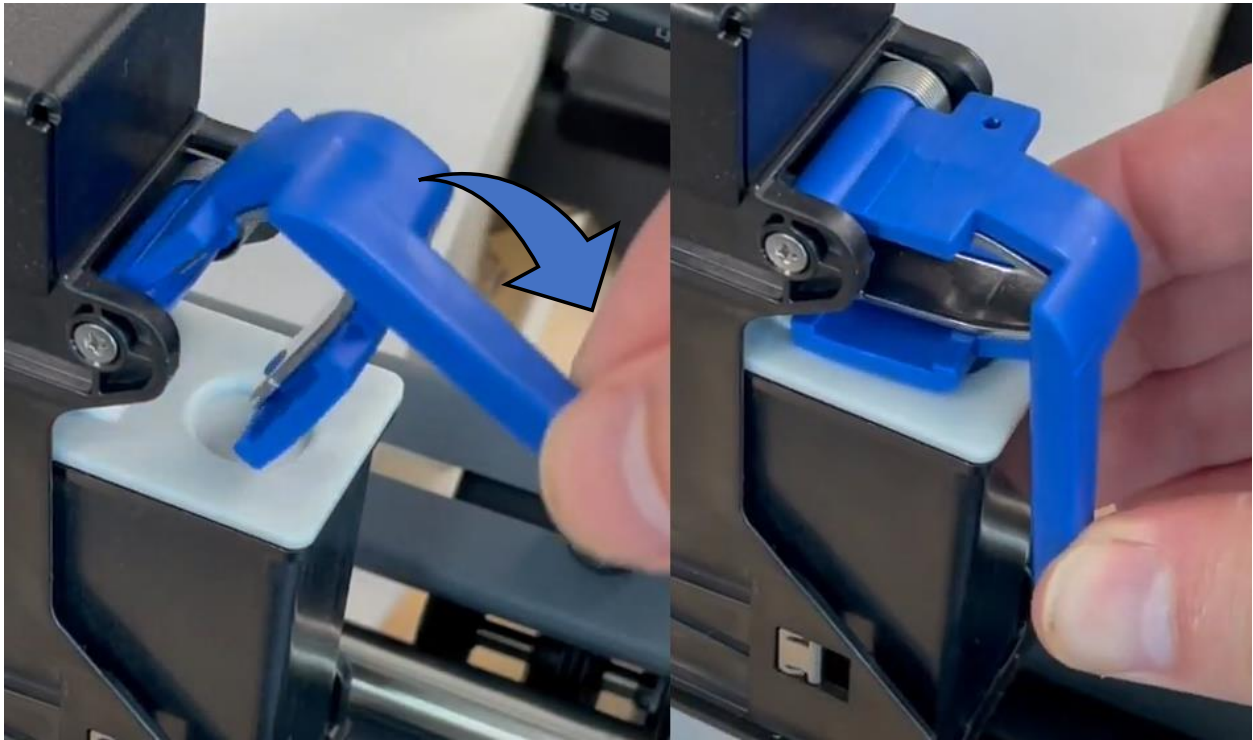


3. Push the cartridge straight into the cartridge carrier and then down.





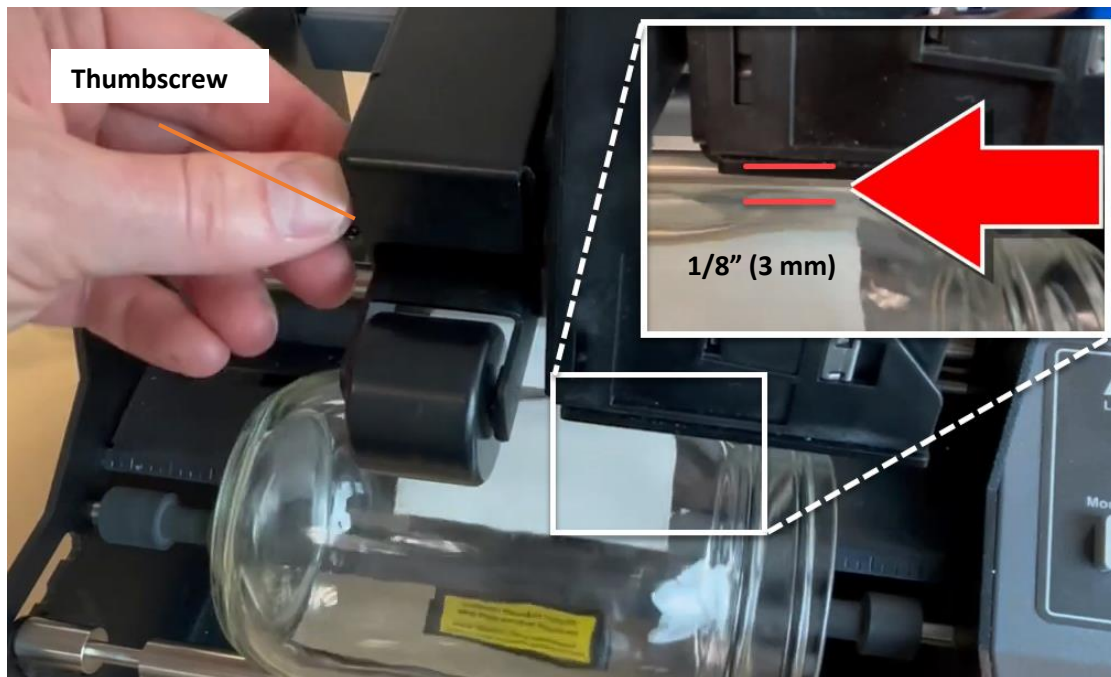
4. When the cartridge is fully seated, lower the blue lever to lock it into place.



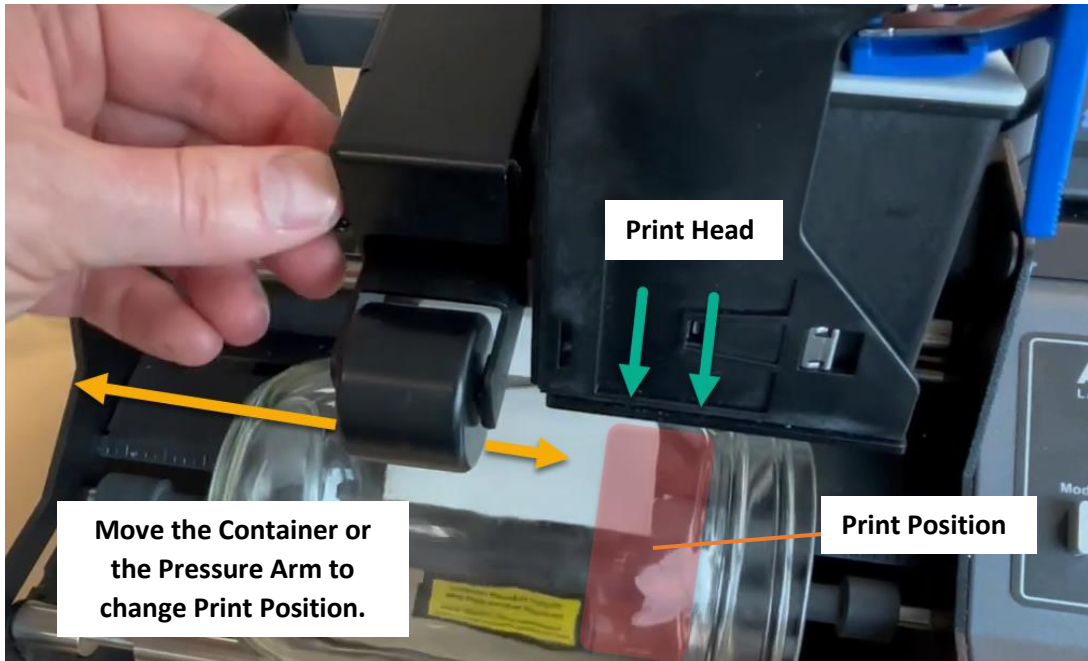
Section 2 How to use AP-CODE

2A Tutorial: Create a Tag

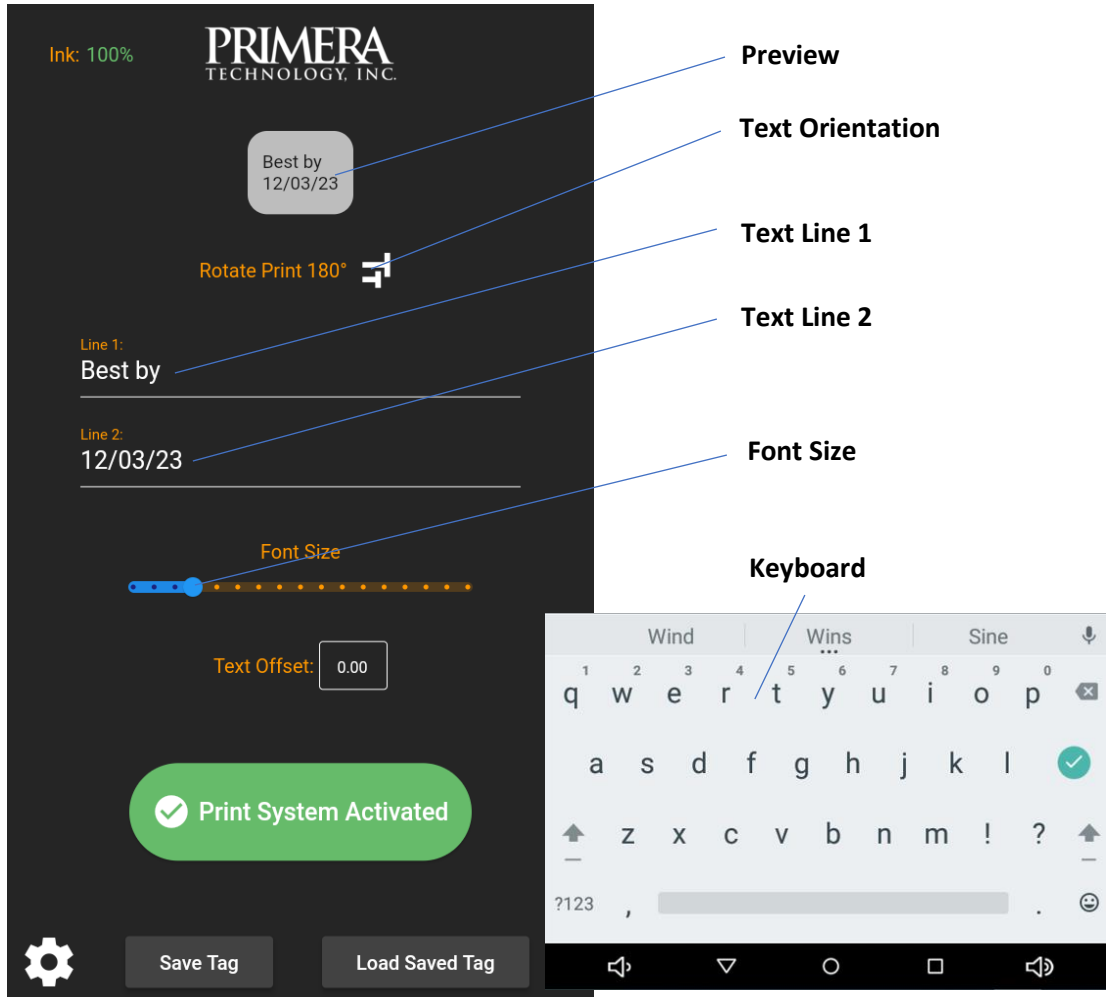
1. Install your label roll and thread it through the Applicator as you normally would. Refer to the applicator [setup video](#).
2. Ensure the container pressure arm is contacting the container with pressure. Usually you will need to remove the container first, lower the container pressure arm $\frac{1}{2}$ " and press the container in place. The pressure arm is spring-loaded. This allows the spring pressure to engage your container.
3. Once your container has been installed, use the thumbscrew to adjust the position of the print head/printing position. There should be approximately $\frac{1}{8}$ " (3mm) between the container and the printhead.



4. Move the container left to right or the Pressure Arm left to right to adjust the print position. You may need to change the orientation of your container to achieve some print positions. In the example above, to print on the bottom of the container, we would need to flip the container, so the top of the container is on the left.

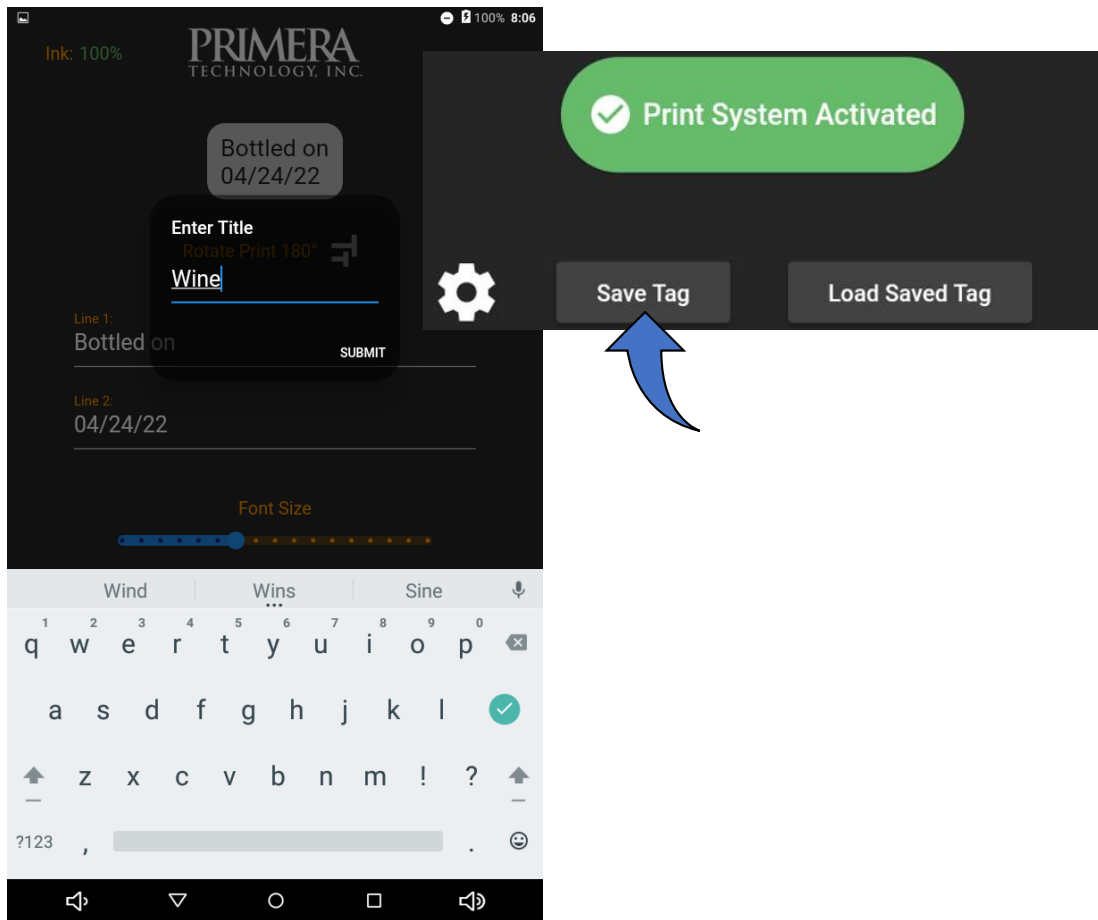


- Once the container is in the correct position, you are ready to create the tag. Touch Line 1 on the display. When you touch the screen, a keyboard will appear. Type the contents of your tag. In this case, type "Best By". Repeat the process for Line 2. Type the Best by date "12/03/23". Line 2 is optional.



- You may also adjust text orientation by touching the Tt icon or adjust font size by grabbing the slider and dragging. If the font is too large, you can only print one line of text.

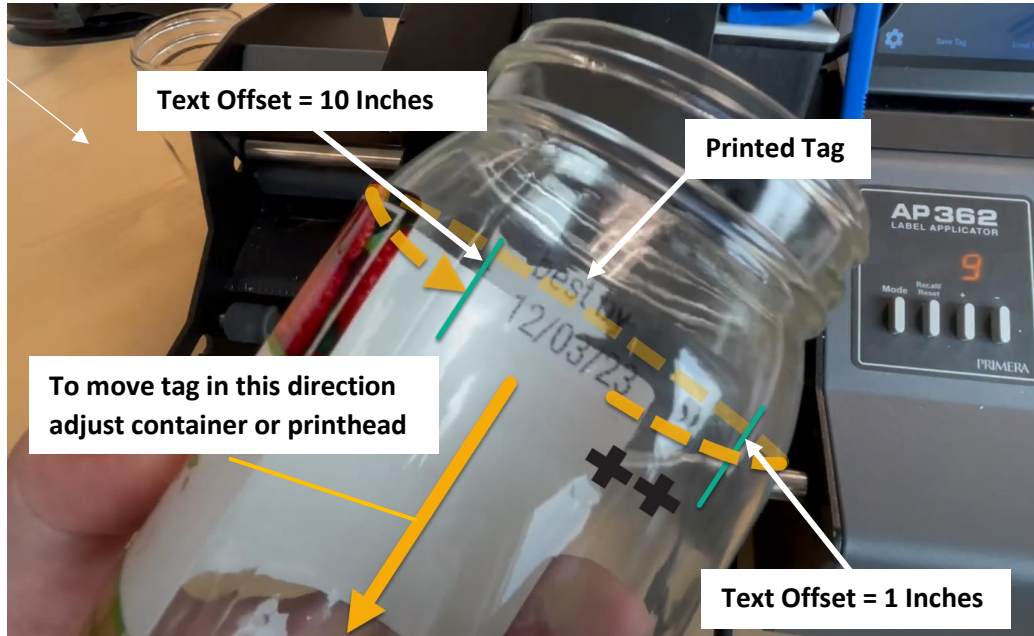
7. Touch Save Tag to save the text and attributes for future use.



8. We are now ready to apply a label and print our tag. Load a container and press the foot pedal.



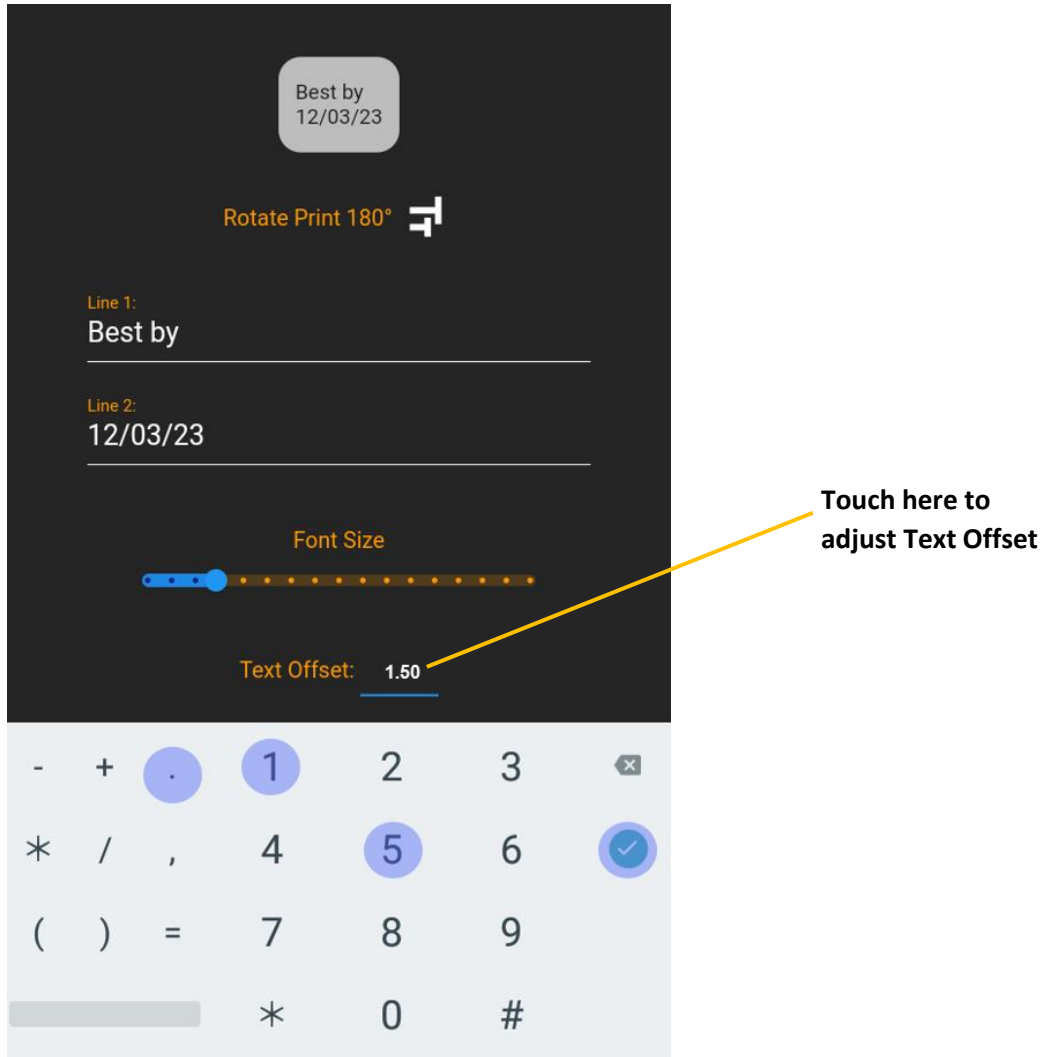
9. The first time you apply a label and print, you will probably need to adjust the position text offset. Text offset adjusts the tag position around the circumference of the container. You can only move the tag in one direction. For example: to move the tag slightly to the right you increase the text offset just a little. If you want to move it to the left, you would increase the offset by a lot, so the text would move almost all the way around the container!



10. In this case, we would like to move the tag to the right, so it is directly on the back of the container relative to the position of the label. Use a paper roller or flexible tailor ruler to measure how far to move the tag.



11. Press "Text Offset" on the touch screen to enter the amount you want to move the tag. The maximum offset is 17".



12. Now, apply the label and print again. It's perfect!



2B Touch Screen Overview

The screenshot shows a touch screen interface for a printer. At the top left is a hamburger menu icon. The top center displays the logo for PRIMERA TECHNOLOGY, INC. To the right of the logo, it shows 'Ink: 100%' and 'Prints: 25' with a circular refresh icon. Below this is a grey rounded rectangle containing the text 'Expires On: 01-13-2023'. Underneath is a 'Rotate Print 180°' option with a square rotation icon. There are two text input fields labeled 'Line 1:' and 'Line 2:', both containing the text 'Expires On: 01-13-2023'. Below the input fields is a 'Font Size' slider with a blue knob. Under the slider is a 'Text Offset: 0.0' input field. At the bottom of the screen are two large grey buttons with a pause icon and the text 'Print System Paused'. At the very bottom are a gear icon for 'System Settings (2C)', a 'Save Tag' button, and a 'Load Saved Tag' button. On the right side of the screen, there are several labels with lines pointing to specific UI elements: 'Auto-Date Calculator' points to the top left menu; 'Ink Percentage Remaining' points to the 'Ink: 100%' text; 'Print Counter Reset' points to the refresh icon; 'Actual Size Preview' points to the 'Expires On: 01-13-2023' box; 'Change Orientation' points to the rotation icon; 'Tag Text Input' points to the 'Line 1' and 'Line 2' input fields; 'Adjust Font Size' points to the font size slider; 'Move Text around the circumference' points to the 'Text Offset: 0.0' input field; 'Green Check = Ready to Print Press the foot pedal to apply a label and Print' points to the 'Print System Paused' buttons; and 'To apply Labels with out printing touch the button to pause the Print System.' points to the same buttons. At the bottom, 'System Settings (2C)' points to the gear icon and 'Save & Load Tag (2D)' points to the 'Save Tag' and 'Load Saved Tag' buttons.

Auto-Date Calculator

Ink Percentage Remaining

Print Counter Reset

Actual Size Preview

Change Orientation

Tag Text Input

Adjust Font Size

Move Text around the circumference

**Green Check = Ready to Print
Press the foot pedal to apply a label and Print**

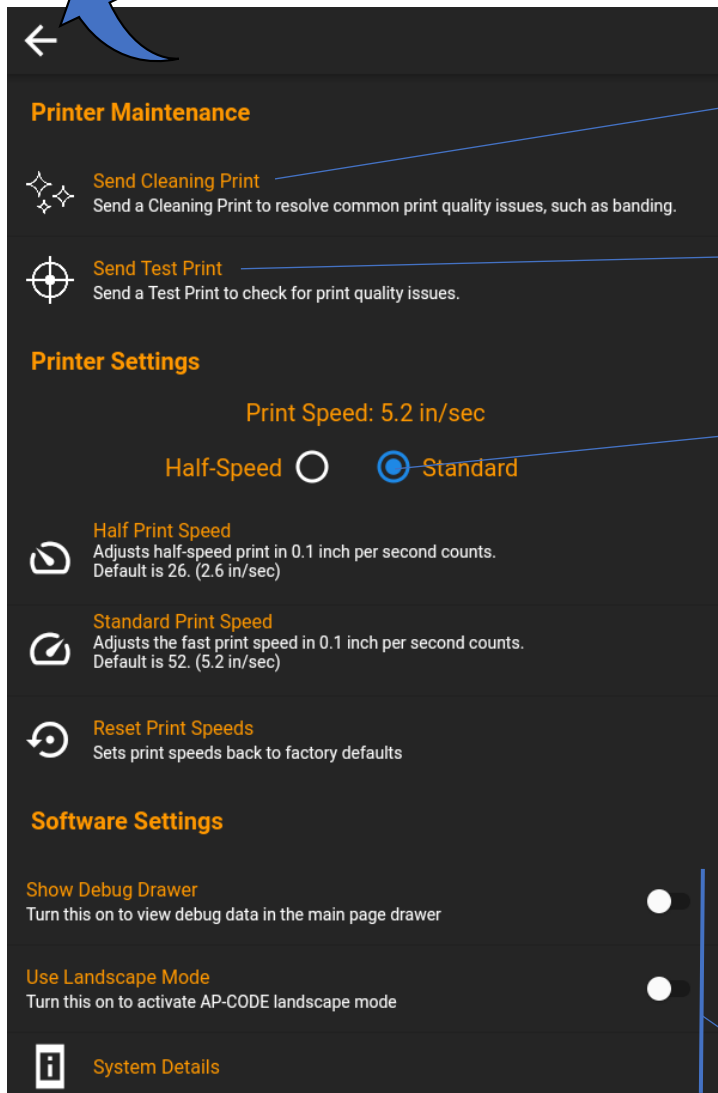
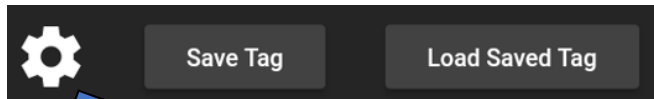
To apply Labels with out printing touch the button to pause the Print System.

System Settings (2C)

Save & Load Tag (2D)

2C System Settings

Touch the gear icon to access system settings



Send a Cleaning Print fix to printing problems.

Send a Test Print to diagnose printing problems.

Print Speed: Match the Print Speed to the the container speed setting set on the Applicator. The AP360/362 includes a half-speed mode that generates more power from the motors for wider label stock. To activate this mode, hold down the Foot Switch while switching on the unit. The AP362 will remain in this mode until it is deactivated.

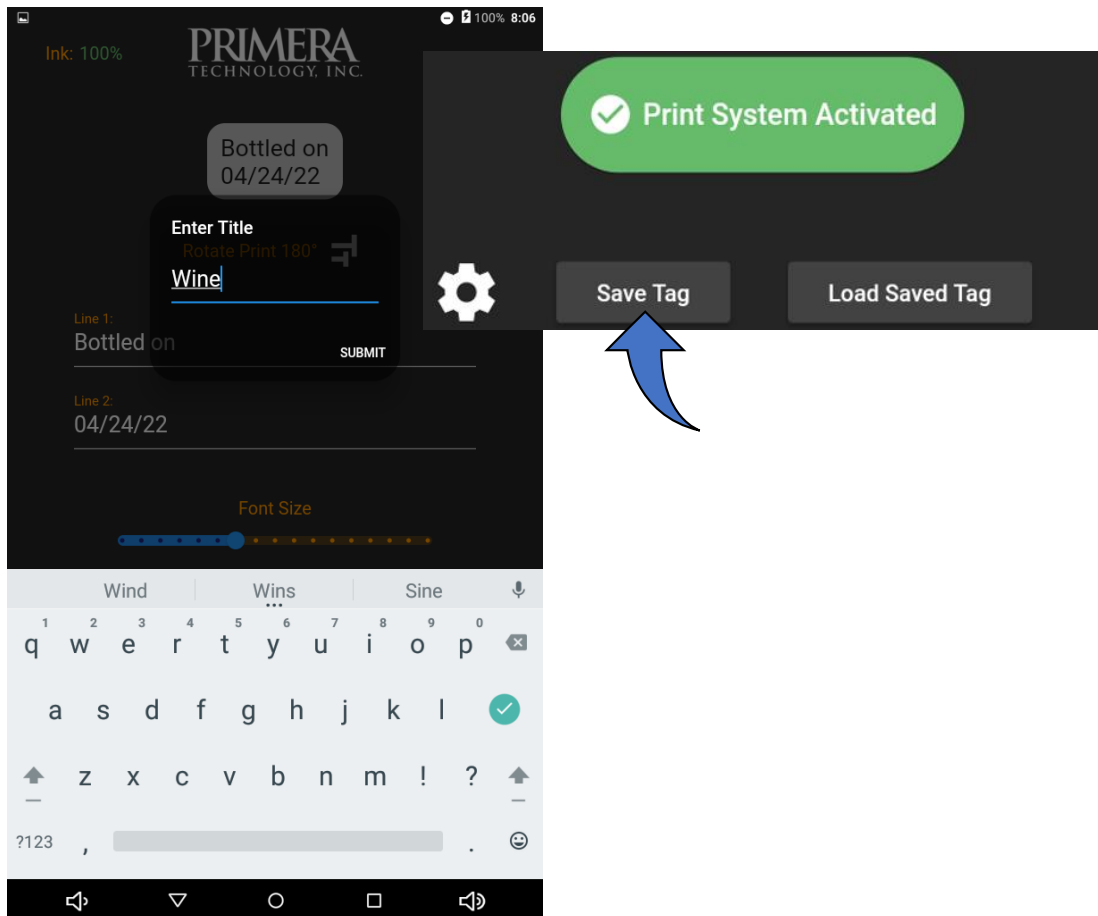
To deactivate this mode, hold down the Foot Switch again while switching on the unit.

Adjust these settings if directed to do so by Tech Support

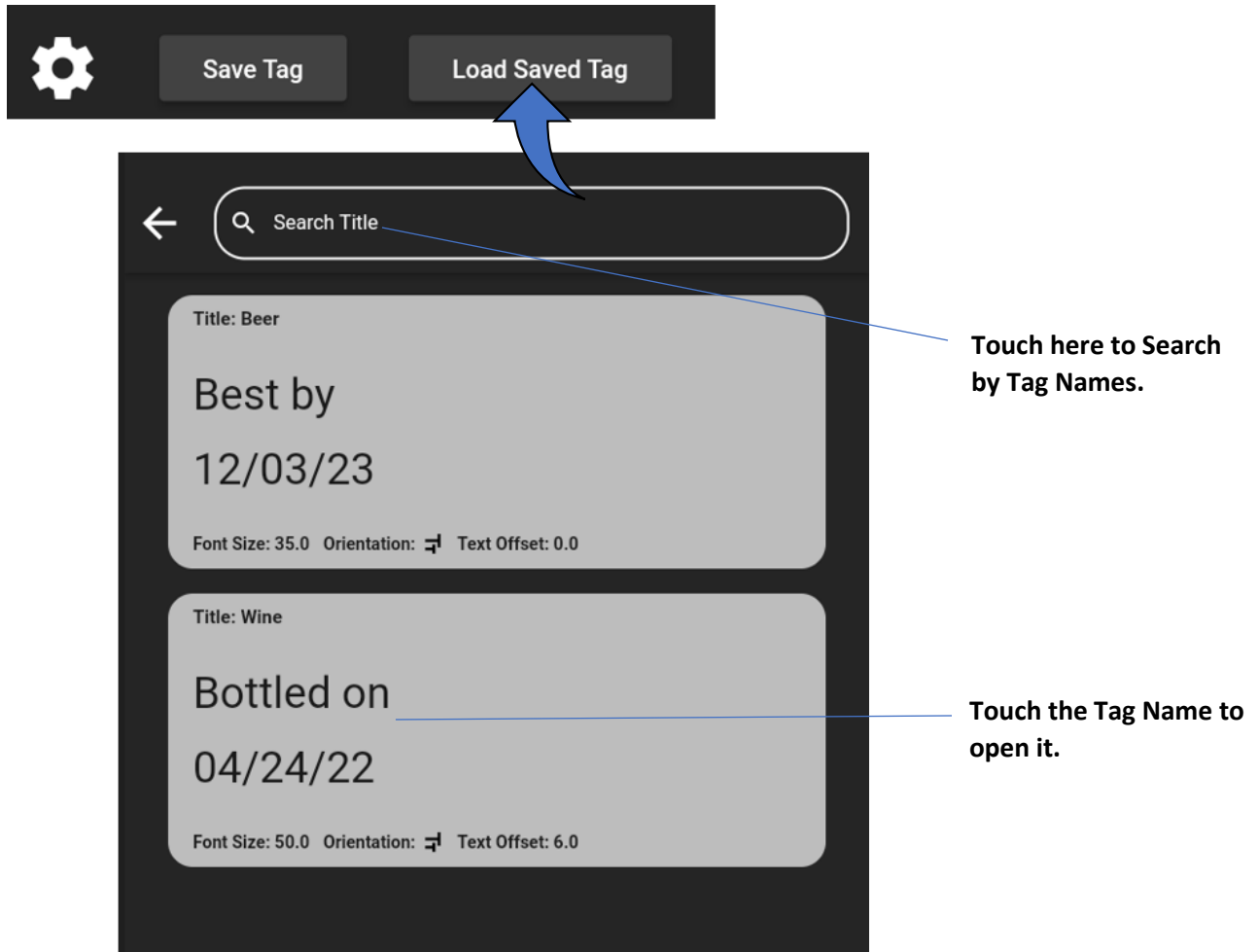
2D Save and Load Tags

If you have several different containers with unique text and setting configurations, you can Save tags and load them again for future use. The text, font size, Orientation, and Text Offset will be saved along with the name you choose for the tag.

1. Touch Save Tag to save the text and attributes for future use.



2. To load the tag, press the Load Saved Tag button on the main screen.



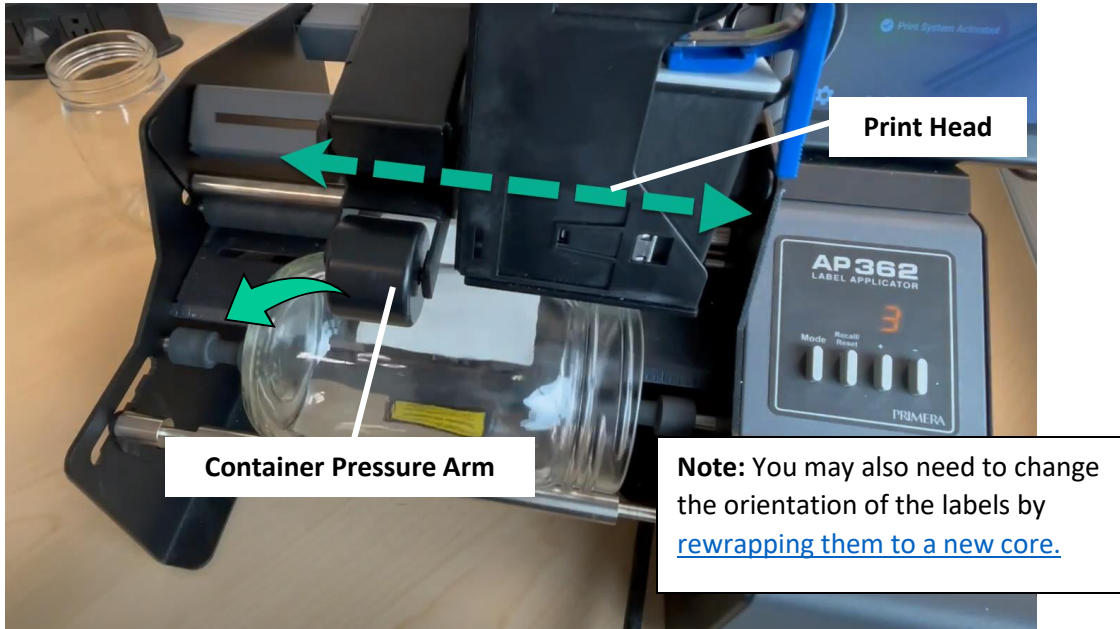
2E Adjusting Print Position

There are three ways to adjust print position of the tag.

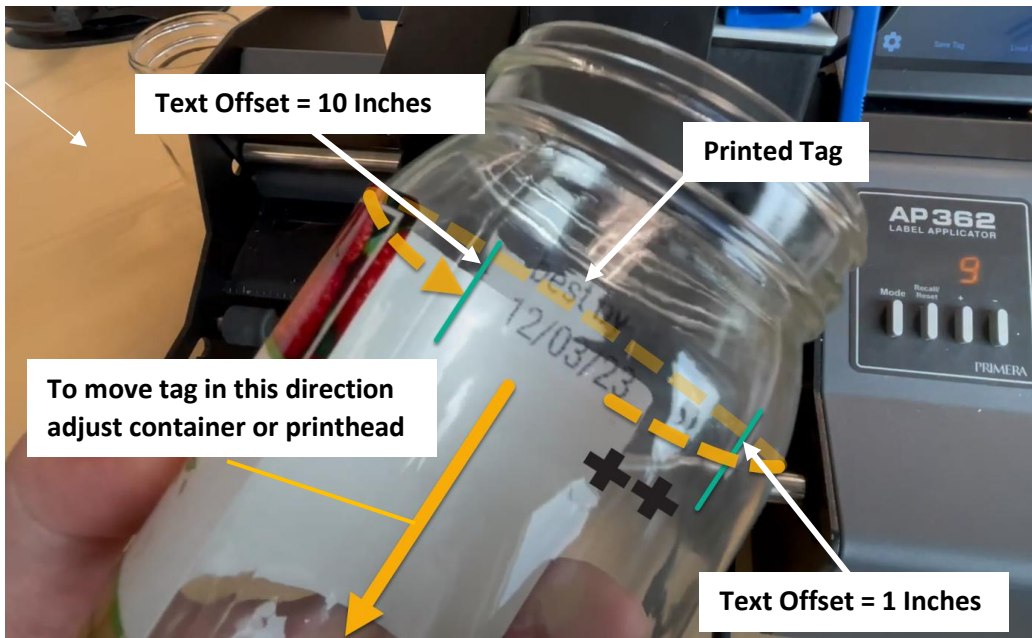
1. **Adjust the Container Position.** You can move the container left or right on the container rollers. You can also flip the orientation of the container. In the example below, in order to print on the bottom, the container would need to be in the opposite orientation.



2. **Adjust the Print Head Position.** You can adjust the print head position by moving the container pressure arm left or right. You have a limited range to move this if you would still like to use the container pressure arm to keep pressure on the container for optimal label application. If you move it too far to the left, the arm will no longer contact the container. In this case, it may be better to change the container's orientation (see #1).



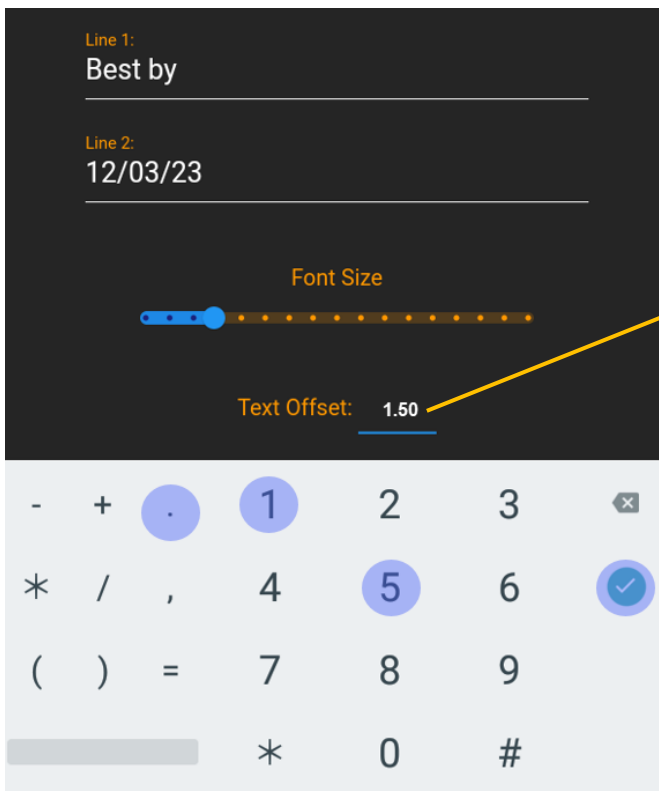
3. **Adjust the Text Offset to change where the tag prints around the circumference.** You can only move the tag in one direction. For example: to move the tag slightly to the right, you increase the text offset just a little.



In this case, we would like to move the tag to the right, so it is directly on the back of the container relative to the position of the label. Use a paper roller or flexible tailor ruler to measure how far to move the tag.



13. Press "Text Offset" on the touch screen to enter the amount you would like to move the tag. The maximum offset is 17".



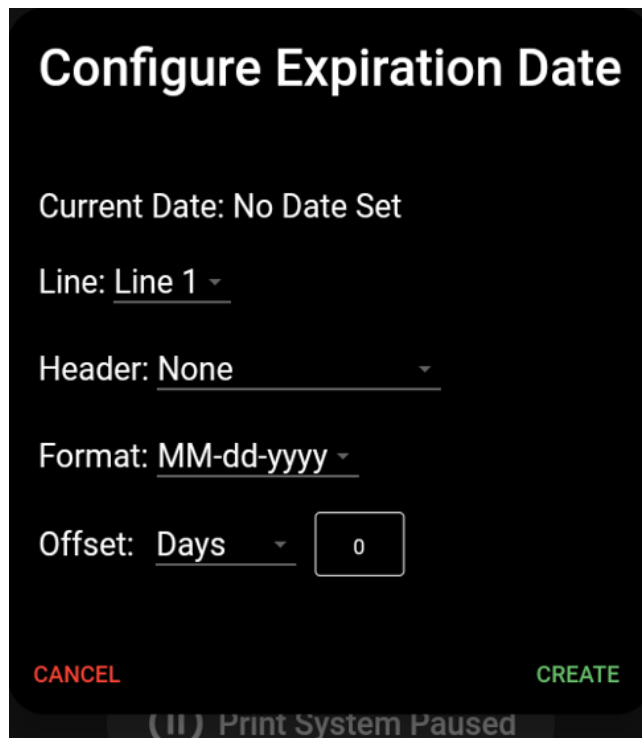
2F Create Automated Expiration Dates

If your product has an expiration, best-by date, or manufacture date you would like printed on your container, you can use this feature to automate the process by adding a date offset from the current date, so you don't always have to change the expiration date every time you apply labels and add tags.

1. To enable this feature, press the menu icon in the upper left corner of the screen.



2. First, you will need to set the Current Date. This will be stored in the system as long as power is connected to the date coder. If power is removed, you will be prompted to enter the date again if you choose a tag that contains an auto-calculated date. **Note:** You can switch off the applicator without disconnecting power to the Date Coder.



3. Set the line you would like the automated date to appear.

Configure Expiration Date

Current Date: December 12, 2022

Line: Line 1 ▾

Header: Expires On: ▾

Format: MM-dd-yyyy ▾

Offset: Months ▾

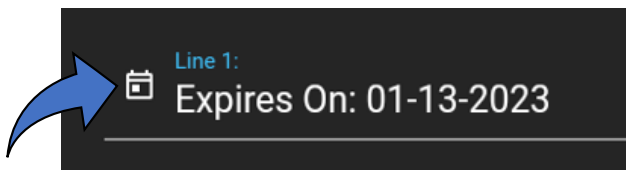
CANCEL **CREATE**

Print System Paused

Offset: Days ▾

Note: To print the current date, set the Offset to zero Days.

4. Choose the header from several premade options, or choose your own by selecting "Custom."
5. Set the date format.
6. Finally, set the offset, which is the number of days, months, weeks, or years from the current date you set previously. This will be the date that appears on the tag. **For example:** if the current date is 12-9-22 and you set the offset for three months, the date that appears on the tag will be 3-9-23.
7. Click Create.
8. If your tag has an automated date, you will see a calendar icon on the line with the automated date.



Section 3: Maintenance and Troubleshooting

3A Cartridge Cleaning – Nothing is Printing

If you have not used the AP-CODE Date Coder for some time you may need to clean the nozzles.

1. Prepare items needed for the procedure.

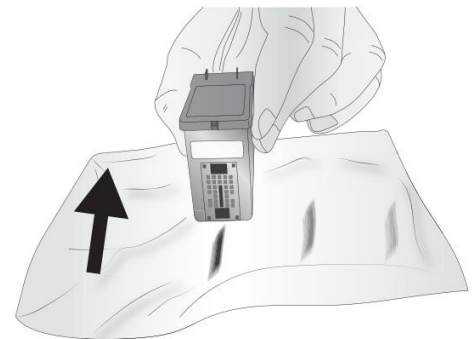
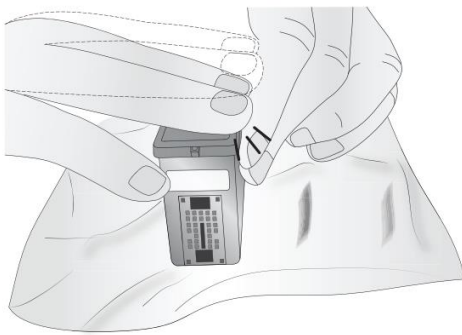


Paper Towel



Isopropyl Alcohol

2. Soak a section of the paper towel in isopropyl alcohol.
3. Wipe the nozzles.

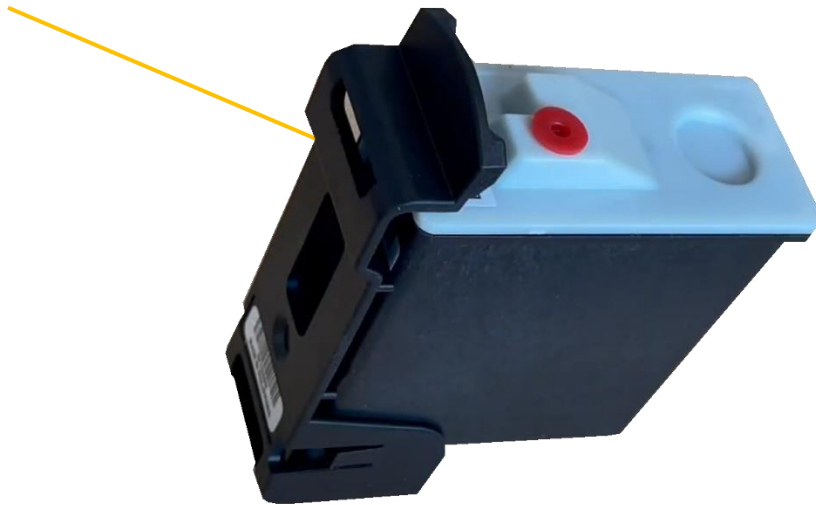


- a. Place the paper towel on a flat/hard surface.
- b. Press the nozzles into the paper towel.
- c. **Firmly tap the top of the cartridge three times to force the ink out.**
- d. Wipe/Drag the cartridge in the direction indicated.

3B Cartridge Storage

If you will not be using the Date Coder for several weeks, recommend removing the cartridge from the carrier and storing it in the Cartridge Cap.

Cartridge Cap



3C Tag Removal

If you accidentally print in a location you did not intend, you can remove the print entirely by using isopropyl alcohol to clean the print from the container. This works best on glass and plastic or metal.

3D Acceptable Print Surfaces

You may print on the following surfaces.

- Polyester, BOPP, Vinyl or Paper Labels
- Glass
- Plastic
- Metal

Section 4: Technical Support

If you have difficulties operating your Printer, contact technical support using one of the methods listed below.

Source	Location
Primera Knowledge Base	www.primera.com/kb
Email Support	www.primera.com/customer-support
Phone Support	763-475-6669 (Mon - Fri 7 a.m. - 10 p.m CST and Saturday 11 a.m. – 8 p.m.)
Chat	www.primera.com – see chat icon in lower right corner (Mon - Fri 7 a.m. - 10 p.m CST and Saturday 12 noon – 9 p.m.)

Section 5: Technical Specifications

Print Method: Inkjet

Print Resolution: 300 dpi

Ink: Solvent Black

Print Height: Up to 0.5"

Print Width: Up to 11" (Touch Screen Preview will only show up to 3.25")

Print Speed: Prints in 1 second while applying the label

Dimensions: Tablet: 4.8"W x 7.1"H x 0.5"D (121.9mm W x 180.3mm H x 12.7mm D)

Base: 5"W x 6"H x 4"D (127mm W x 152.4mm H x 101.6mm D)

Cartridge Holder: 5"W x 4.5"H x 2.2"D (127mm W x 114.3mm H x 55.9mm D)

Weight: Printer (Base and Cartridge Holder): 2 lb 6 oz (38 oz)

Tablet: 7.6 oz

Agency Certifications: UL, UL-C, CE, FCC Class A

Works With: AP360 and AP362 Label Applicators

Section 6: Certifications and Environmental Policy

EMC: Class B

Human operator intervention is acceptable for this product in an ESD event. This means it is possible that static electricity may be discharged when touching the screen, which may restart the tablet.

FCC:

NOTE: This equipment has been tested and found to comply with the limits for a Class B digital device, pursuant to part 15 of the FCC Rules. These limits are designed to provide reasonable protection against harmful interference when the equipment is operated in a commercial environment. This equipment generates, uses, and can radiate radio frequency energy and, if not installed and used in accordance with the instruction manual, may cause harmful interference to radio communications. Operation of this equipment in a residential area is likely to cause harmful interference, in which case the user will be required to correct the interference at his own expense.

Environmental Policy

The European Union (EU) has developed the WEEE (Waste Electrical and Electronic Equipment) Directive (WEEE Directive 2012/19/EU) to ensure that systems for collection, treatment, and recycling of electronic waste will be in place throughout the European Union.

Electrical and electronic equipment (EEE) contains materials, components, and substances that may be hazardous and present a risk to human health and the environment when waste and electronic equipment (WEEE) is not handled correctly.

Equipment marked with the below crossed-out wheeled bin is Electrical and electronic equipment (EEE).

The crossed-out wheeled bin symbol indicates that the product is EEE and must be collected separately, in accordance with the WEEE Directive 2012/19/EU.



Users of EEE must not discard WEEE together with household waste. Users must follow local recycling regulations to reduce adverse environmental impacts in connection with disposal of WEEE and to increase opportunities for reuse, recycling, and recovery of WEEE. As a user of this EEE, you have an important role in recycling this equipment and contributing to the protection of the environment and the conserving of natural resources.

When a product reached its end of life, contact us at environment@primera.com or +1-763-475-6676 to arrange its recycling. Primera will work with you to arrange for the recycling of the product.